

Routine Maintenance

Most liquid cleaners or graffiti gel can be used to clean your camera enclosure. Do not use abrasive cleaners that can scratch the window and reduce visibility of the camera. If the window in your camera is damaged or scratched beyond use, order a replacement window from your camera distributor.

Service and Warranty

If your SA Series Wedge Camera is to be returned to Seon Design for service, please call toll free 1-877-630-7366, or 604-941-0880, and provide the model and/or serial number of your unit. Ask for a Return Authorization (RA) number. An RA number allows the Service Technicians to better track your product when it comes in for service. Please show the RA number on the outside of the package. **ANY PRODUCT SENT TO SEON DESIGN WITHOUT AN RA NUMBER MAY BE REFUSED.** Please refer to the Warranty form provided with your product to review the terms of warranty service, contact and shipping information, as well as other important issues regarding the service and operation of your product.

FCC Class B Statement (U.S.A.)

This device complies with Part 15 of the FCC Rules. Operation is subject to the following two conditions: (1) This device may not cause harmful interference, and (2) this device must accept any interference received, including interference that may cause undesired operation.

Industry Canada Notice

This Class B digital apparatus meets all requirements of the Canadian Interference-Causing Equipment Regulations.

Cet appareil numérique de la classe B respecte toutes les exigences du Règlement sur la matériel brouilleur du Canada.

Information in this guide is subject to change without notice.

© June 2010 | Seon Design Inc. | All rights reserved.

www.seon.com Printed in Canada Part Number: 700-0004 R003



SEON

SA Series Wedge Camera Quick Installation Guide



1 Removing the Cover

- 1 Use the security key provided with your camera to remove the screw that secures the cover to the base. See Figure 1.
- 2 Pull the cover away from the base. Do not twist the cover off.
- 3 Unplug the audio module harness from the connector on the main circuit board.

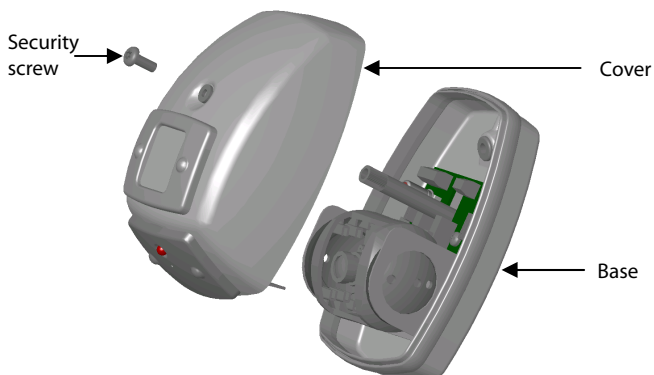


Figure 1

2 Changing the Window Bezel

The camera is factory assembled for wall mounting. For ceiling mounting, swap the positions of the window bezel and the audio module bezel. See Figure 2.

- 1 Use a Phillips screwdriver to remove the four bezel screws.
- 2 Exchange the audio module and window bezels. Install the gasket between each bezel and the camera cover. Position the anchor plate as shown in Figure 2.
- 3 Replace the four bezel screws. Do not use lock washers on the anchor plate screws. **Do not overtighten the screws.**

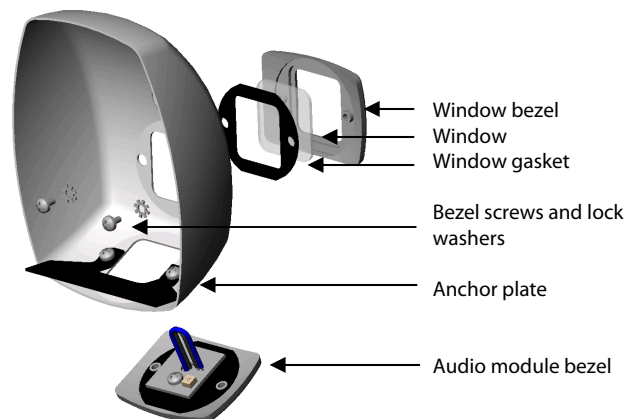


Figure 2

3 Mounting and Wiring the Camera

The camera mounts to either walls or ceilings. Use the surface gasket if mounting to a curved surface or over top of rivet heads. See Figure 3.

- 1 Use the camera base or surface gasket as a template to mark the mounting and wiring holes on the mounting surface.
- 2 Use three #10×¾ sheet metal screws with neoprene washers (provided with your camera) to attach the camera to the mounting surface. Use the neoprene washers to ensure the camera enclosure is sealed. (Alternate fasteners can be used if they are no larger in diameter than a #10 screw.)
- 3 Your camera is factory assembled with an external video/audio/power cable. If necessary, this cable can be removed for easier installation. Reattach the video, audio, and power wires to the terminal blocks on the main circuit board. See Figure 4.

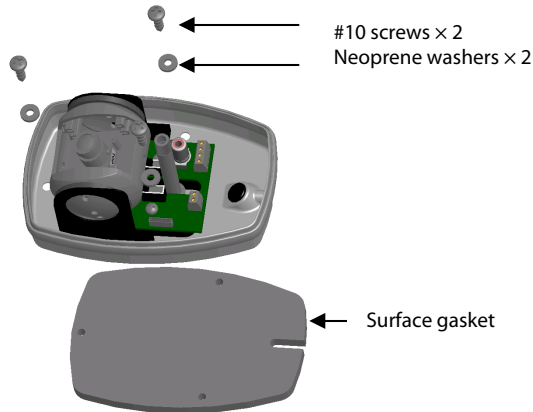


Figure 3

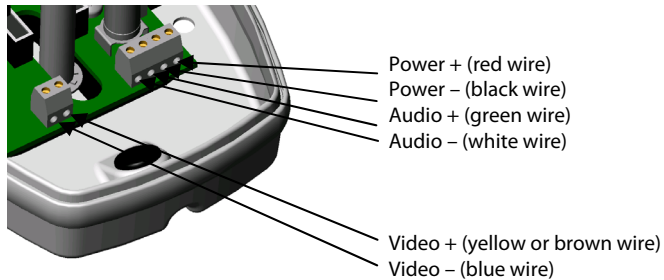


Figure 4

4 Aiming the Camera

- 1 Connect a video monitor to the video connector on the main circuit board. See Figure 5.
- 2 Rotate the camera carrier in the support bracket to get the desired video image.
- 3 If necessary, turn the support post counter-clockwise to allow the support bracket to move forward or backward. Turn the support post clockwise to lock the support bracket.
- 4 Hold the camera cover in place to make sure the cover does not block the video image.

5 Adjusting BLC and Indicator Lamp

The BLC (backlight compensation) switch adjusts the brightness of the image based on light levels in specific areas of the video picture. See Figure 5.

- If the BLC switch is OFF, the shutter speed is based on the light level of the entire image.
- If the BLC switch is ON, the shutter speed is based on the light levels near the center of the image. This can improve the quality of images that are unevenly lit.

The Indicator Lamp in the audio module bezel can be turned ON or OFF as desired using the lamp switch. See Figure 5.

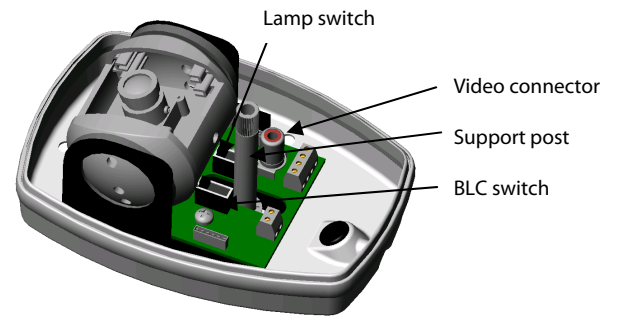


Figure 5

6 Adjusting the Microphone

- 1 Adjust the sensitivity of the microphone for better performance in different environments. Adjust the level control using a small slot screwdriver. See Figure 6. Turn the control clockwise to decrease the level. Turn the control counter-clockwise to increase the level.
- 2 The noise level will be much higher with the vehicle running. Test the microphone under normal driving conditions to ensure the correct sensitivity is set.

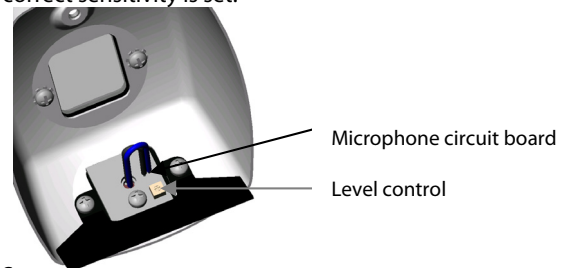


Figure 6

7 Installing the Camera Cover

- 1 Plug the connector from the audio module bezel into the mating connector on the main circuit board.
- 2 Place the cover over the base. Ensure the cover is seated in the rubber gasket and the edges of the gasket are not pinched.
- 3 Use the security key to install the security screw that attaches the cover to the base. This completes the setup of the camera.