

LCD Monitor Configuration

For information on custom monitor settings, see the *Rear Vision Monitor Quick Install Guide* (700-1107)

Related Documents

For full product details, and access to our Document Library, please visit the Seon Community Web site:

<https://community.seon.com>

If you do not have access credentials, please contact Customer Service.

Customer Service

- Service: **1.844.899.7366**
- General Enquiries: 1.877.630.7366
- Email: service@seon.com

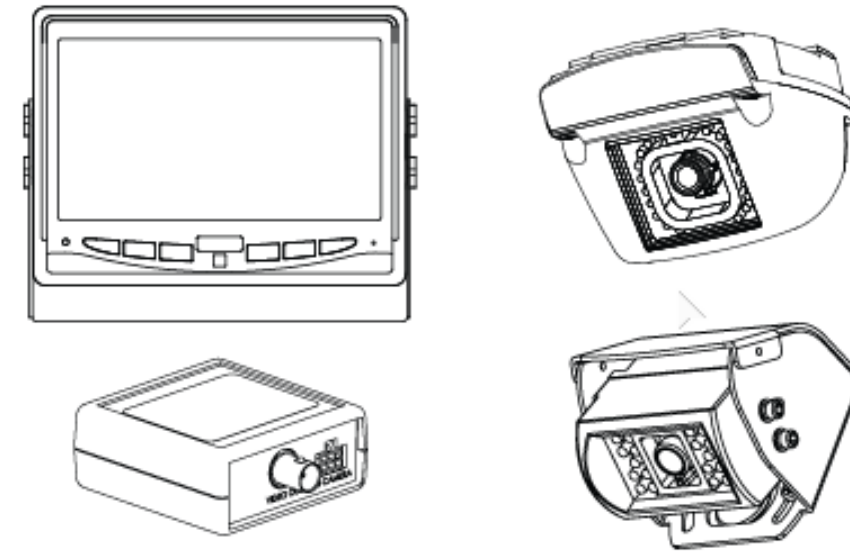
If your RVS device is to be returned, please contact Customer Service, and provide the model and/or serial number of your unit. Ask for a Return Merchandise Authorization (RMA) number. An RMA number allows the Service Technicians to better track your product when it comes in for service. Please show the RMA number on the outside of the package. ANY RETURNED PRODUCT WITHOUT AN RMA NUMBER MAY BE REFUSED.

Warranty

For full warranty information, please visit:

<http://www.seon.com/documents/Seon-Warranty.pdf>

Rear Vision System with Video Splitter Installation Guide



Introduction

The **RVS (Rear Vision System)** for vehicles enables the driver to see the camera output on a dash-mount monitor whenever the reverse signal is triggered. This guide covers the RVS with video splitter system configuration.

Note: High definition camera views cannot be displayed on the monitor.

When installed, the RVS typically operates as follows:

- The monitor is usually OFF (dark)
The monitor only turns ON when the vehicle is put into reverse gear (REVERSE signal is applied to the RVS)

A video source goes directly to the monitor, and can be mirrored with monitor settings. A second feed is sent from the video splitter to the recorder. Video from the rear view camera and events (including alarms) are recorded.

The camera and monitor receive switched power separately from the recorder:

- The camera and monitor continue to operate independently if the recorder has no power or fails
- RVS video and events are not recorded when switched (accessory) power is off

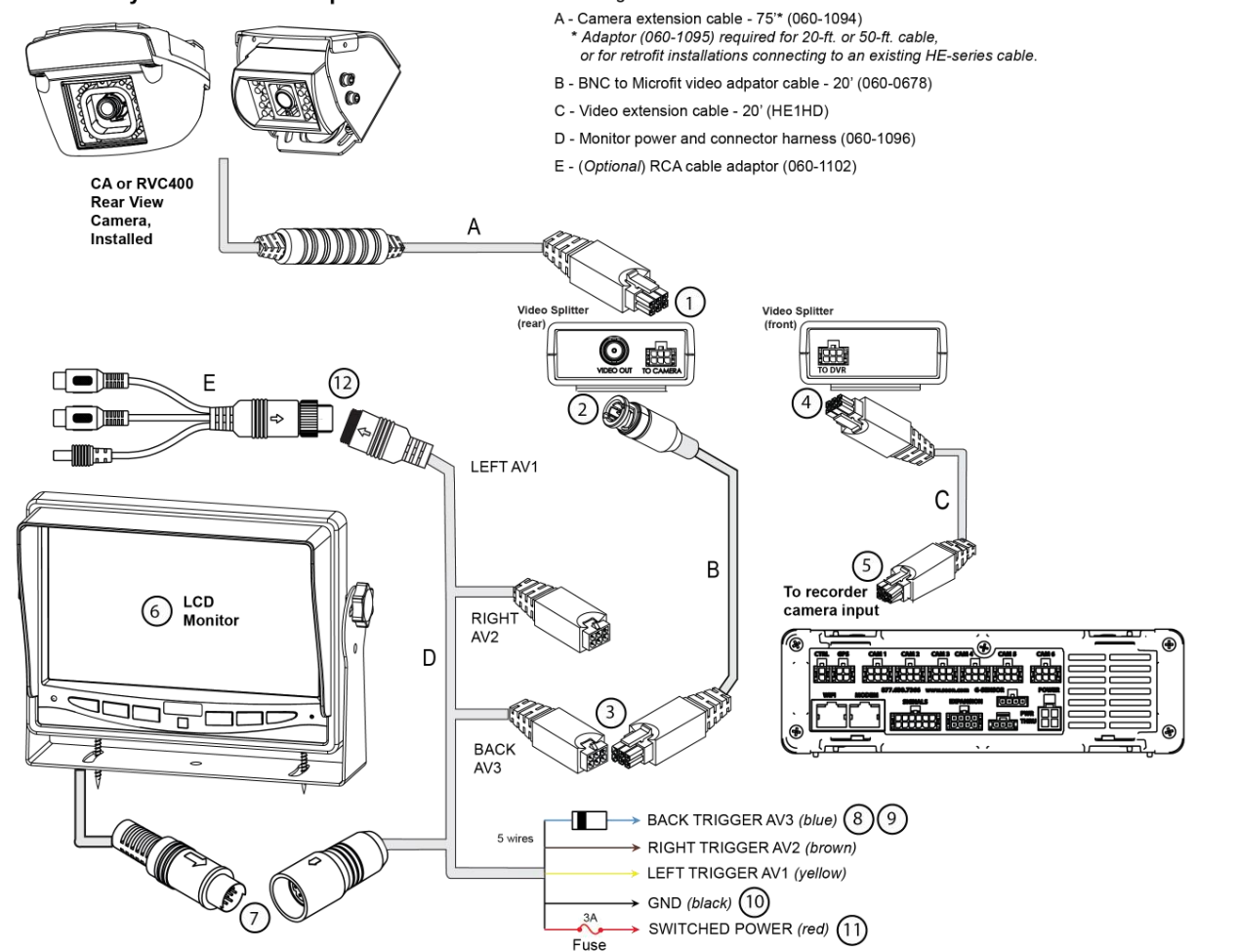
System Installation Components

CA or RVC400 camera - including bracket (660-1072) and hardware kit (020-1043)	75' Camera extension cable (060-1094) Camera cable adaptor for retrofit (060-1095)
7" Monitor (080-1059), including sunshade (665-1020), bracket (660-1073), and hardware kit (020-1042) Rear Vision Monitor Quick Install Guide (700-1107)	20' Video extension cable (HE1HD) Monitor power and connector harness (060-1096) RCA cable adaptor (060-1102)
Video splitter (050-0217) 20' BNC to Microfit video adaptor cable (060-0678)	Monitor diode kit (020-1045)

Monitor, Camera, and Video Splitter Connections

Use the following image and steps to connect the monitor and camera, and the video splitter:

Rear Vision System with Video Splitter



1. Once the camera is installed according to its installation documentation, connect cable **A** to the **TO CAMERA** port on the rear of the video splitter
2. Connect the BNC on cable **B** to **VIDEO OUT** on the rear of the splitter.
3. Connect the 2x3 Microfit connector on cable **B** to the **BACK AV3** Microfit socket on cable **D**.
4. Connect a 2x3 Microfit connector on cable **C** to the **TO DVR** port on the front of the video splitter.
5. Connect cable **C** to a camera port on the back panel of the recorder.
Take note of the camera channel number – you'll need it for the Recorder Configuration procedure, below.
6. Install the monitor bracket and mount the monitor on the dashboard.
For details, see the *Rear Vision Monitor Quick Install Guide* (700-1107).
7. Connect the monitor output from cable **D** to the monitor input cable.
Verify that the arrows on the connector ends are aligned.
8. Connect the **BACK TRIGGER AV3** (blue) fly wire from cable **D** to the striped end of the supplied diode.
9. Connect the unmarked end of the supplied diode to the reverse signal input (active high trigger).
10. Connect the **GND** (black) fly wire from cable **D** to battery negative.
11. Connect the **POWER** (red) fused fly wire from cable **D** to 12V ignition (switched source) power.
12. (Optional) Attach the M12 socket on cable adaptor **E** to the **LEFT AV1** input on cable **D**.
The RCA jacks on cable **E** accept composite video input from an accessory device such as the inView 360 Fusion system. For more information, visit the Seon Community (<https://community.seon.com>).
13. See "Power On and Test".

Power On and Test

1. Turn on accessory power to the vehicle.
2. Put the vehicle in reverse gear.
During normal operation, the monitor only turns on when the vehicle is shifted into reverse.
If the monitor fails to turn on when power is applied, confirm power connections. Disconnect and firmly reconnect the LCD Monitor cables.
3. Configure the recorder (see *Recorder Configuration*, below).
4. Adjust the camera view so that the bumper of the vehicle is just visible across the bottom edge of the monitor, as shown.

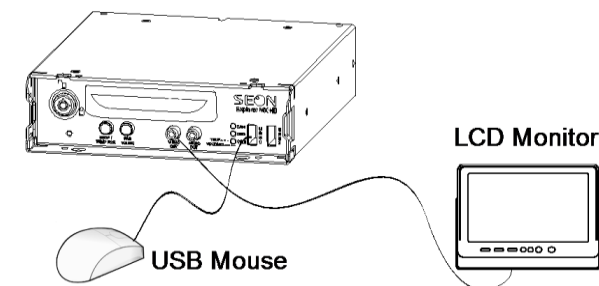


5. Refer to the camera installation guide for details on closing and fastening the camera once it has been aimed.
6. Turn off accessory power to the vehicle.

Recorder Configuration

To configure the recorder to properly record the camera information:

1. On the recorder, connect a diagnostic monitor to the front **Video Out** RCA jack, and plug in a USB mouse.



2. Right-click anywhere on the screen to display the **Main Menu**, then select **Configuration**.

Recorder Configuration (*continued*)

3. Select **Record**→**Camera**
Ensure the camera channel you connected to the RVS feed from the splitter has **FPS** set (not OFF). Channel 3 is used in the example:



4. Click **Back** twice to save any changes and return to the Configuration tab.
5. Exit recorder Configuration menus.
6. Reboot the recorder and test the monitor view with the vehicle in reverse.
7. Disconnect the diagnostic monitor and mouse.