



# MobileView 3000 Docking Station User Manual

**Copyright** © 2018 MobileView. All rights reserved. All trademarks are the property of their respective owners..

**Trademarks and patents** Microsoft, Internet Explorer, and Windows are registered trademarks of Microsoft Corporation in the United States and/or other countries. Apple, iPad, iPhone, and iTunes are registered trademarks of Apple Inc. Android is a trademark of Google, Inc. Other trade names used in this document may be trademarks or registered trademarks of the manufacturers or vendors of the respective products.

**Certification**   N0000

Complete additional sections according to the governing laws and standards for the intended market place.

**FCC compliance** This device complies with part 15 of the FCC Rules. Operation is subject to the following two conditions: (1) This device may not cause harmful interference, and (2) this device must accept any interference received, including interference that may cause undesired operation.

**FCC compliance** Class A: This equipment has been tested and found to comply with the limits for a Class A digital device, pursuant to part 15 of the FCC Rules. These limits are designed to provide reasonable protection against harmful interference when the equipment is operated in a commercial environment. This equipment generates, uses, and can radiate radio frequency energy and, if not installed and used in accordance with the instruction manual, may cause harmful interference to radio communications. Operation of this equipment in a residential area is likely to cause harmful interference in which case the user will be required to correct the interference at his own expense.

**ACMA compliance** Notice! This is a Class A product. In a domestic environment this product may cause radio interference in which case the user may be required to take adequate measures.

**European Union directives** 1999/5/EC (R&TTE directive): Hereby, UTC Fire & Security declares that this device is in compliance with the essential requirements and other relevant provisions of Directive 1999/5/EC.



**2002/96/EC (WEEE directive):** Products marked with this symbol cannot be disposed of as unsorted municipal waste in the European Union. For proper recycling, return this product to your local supplier upon the purchase of equivalent new equipment, or dispose of it at designated collection points. For more information see: [www.recyclethis.info](http://www.recyclethis.info).



**2006/66/EC (battery directive):** This product contains a battery that cannot be disposed of as unsorted municipal waste in the European Union. See the product documentation for specific battery information. The battery is marked with this symbol, which may include lettering to indicate cadmium (Cd), lead (Pb), or mercury (Hg). For proper recycling, return the battery to your supplier or to a designated collection point. For more information see: [www.recyclethis.info](http://www.recyclethis.info).

**Contact information** <http://www.mobileviewvideo.com>.

**Customer support** Contact Technical Support: Monday–Friday 6 am – 7 pm EST  
Phone: 1.844.899.7366 Email: [service@seon.com](mailto:service@seon.com)

# Content

## **Product Overview 1**

Package Contents 1

The Front Panel 1

The Rear Panel 2

## **Setting up the Docking Station 2**

Installing the Mobile 1.0 software 2

Connecting to a PC 3

Insert the HDD caddy into Docking Station 3

Removing the HDD caddy from Docking Station 4

## **Using the Mobile 1.0 Software 4**

Starting Mobile 1.0 4

Timeline Bar 6

Video Layout Manager 7

Search Video 8

Snapshot and Archive 10

View Video Information 10

## **Specifications 12**



# Product Overview

The MobileView 3000 Docking Station is an interchangeable mass storage device. The interchangeable caddy allows security managers to sequester video data and keep the MobileView system at full operational capacity.

## Package Contents

When you receive the product, check the package and contents for damage, and verify that all items are included. There is an item list included in the package. If any of the items are damaged or missing, please contact your local supplier.

Items shipped with the product include:

- The MobileView 3000 Docking Station
- 1x Power adapter
- 1x Power cord
- 1x USB2.0 cable.

**Note:** Hard disk tray is not included.

## The Front Panel

Figure 1: The MobileView 3000 Docking Station front panel



## The Rear Panel

Figure 2: The MobileView 3000 Docking Station rear panel



## Setting up the Docking Station

**Note:** Carefully follow these instructions to insert or remove the HDD caddy to avoid damaging the Mobileview 3000 Docking Station or hard disk.

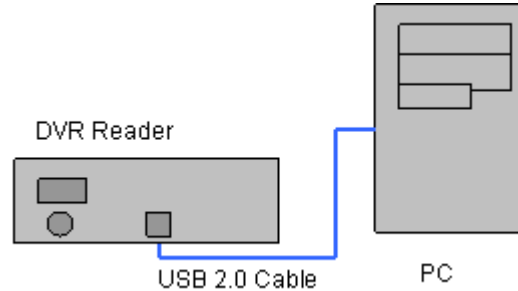
### Installing the Mobile 1.0 software

Please note that the Mobile 1.0 software supports Windows 2000/XP and Windows 7 (32 and 64 bit).

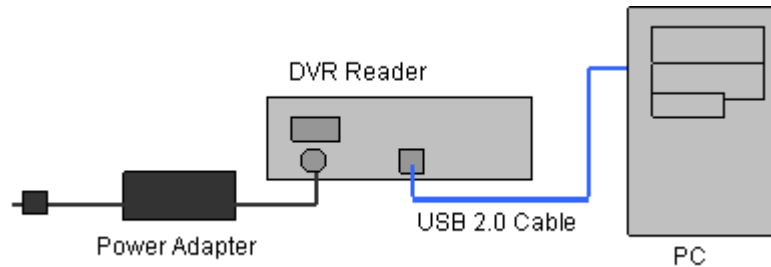
1. Turn on your PC.
2. Insert the Mobile 1.0 software CD in the PC's CD-ROM. Click on the **Setup.exe** icon.
3. Click the **Next** button and follow the instructions to install Mobile 1.0 software. The Installer will launch a simple installation dialog. The installer will check for administration privileges and create a MobileView folder in the *Program Files* directory. The Installer will xcopy the required files to the folder and performs the registration of required components. It will then proceed to create an application Icon and create a start menu link for the Mobile application. The installer will also create windows services for Mobile services. It will then start the services and proceeds to completion.
4. Click on the **Finish** button to complete the installation.

## Connecting to a PC

1. Connect a USB 2.0 cable between the MobileView 3000 Docking Station and your PC.



2. Connect the power adapter's cable to the MobileView 3000 Docking Station.
3. Connect the power cord to the power adapter.



4. Make sure the power switch is in the **OFF** position.
5. Connect the power cord to a power surge protected outlet.

## Insert the HDD caddy into Docking Station

1. Insert the HDD carrier into the MobileView 3000 Docking Station and firmly push to the end.
2. Lock the HDD carrier.
3. Turn on the MobileView 3000 Docking Station using the power switch.
4. Wait until the Remove/Eject icon shows up in System Tray.



## Removing the HDD caddy from Docking Station

1. Exit from the Mobile 1.0 application.
2. Click on the Remove/Eject icon in System Tray to shutdown the HDD caddy.
3. Turn off the power.
4. Unlock the HDD carrier lock.
5. Carefully Pull the HDD carrier from the Docking Station.

## Using the Mobile 1.0 Software

**Note:** For more detailed instructions on how to use Mobile 1.0, please see the MobileView 3000 User Manual.

### Starting Mobile 1.0

1. Start Mobile 1.0 from the desktop shortcut or from the Start Menu. Select *Start/Program Files/MobileView 3000/Mobile 1.0*.
2. The **Login** Screen should appear.

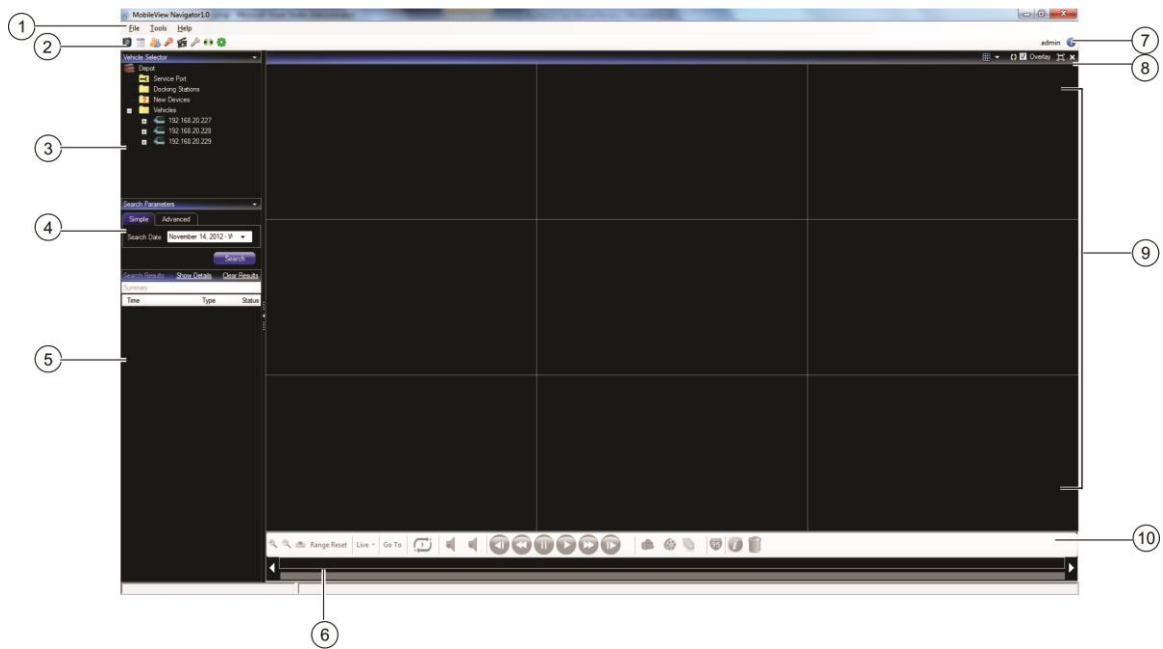
Figure 3: The Login Screen





3. Enter the Username and Password and click on the **Login** Button.
4. The Main Screen should appear.

**Figure 4: The Main Screen**



**Table 1: Mobile 1.0 Main Screen Overview**

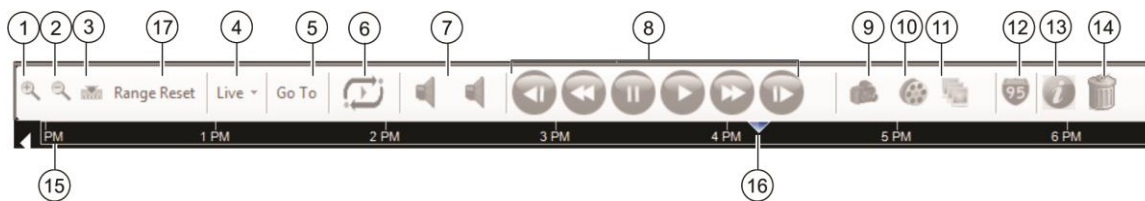
Item	Name	Description
1	File Menu	Contains the following drop-down menus: File, Tools, and Help
2	Toolbar	Contains shortcuts to Common Operations
3	Vehicle Selector Panel	All the folders and respective devices in folders are loaded into the Vehicle Selector tree. The state of devices loaded is represented on the tree. (Reachable/Not reachable) If any Caddies are discovered they are added under Hard Drives node.
4	Search Parameters Panel	Tabs for Simple and Advanced Searching
5	Search Results Panel	Displays the Search results
6	Disk Analysis	When a video tile is selected the disk analysis for that camera is displayed under the timeline bar.
7	Help icon	Launches context sensitive Help
8	Video Layout Manager	Contains commands related to the Video layout: Display Modes, Overlay, Maximize/Restore, and Close
9	Video Display	Displays Live or Playback Video

Item	Name	Description
10	Timeline Bar	While playing video all cameras play in time synch. The video time will be displayed on the viewer and the time line pointer will move as the video proceeds. The following are the operations that can be performed on the timeline.

## Timeline Bar

Timeline and video controls are enabled only while viewing video.

**Figure 5: The Timeline bar**



**Table 2: Timeline Bar Overview**

Item	Name	Description
1	Zoom In	Click to Zoom into the timeline bar to expand the disk analysis more clearly one step at a time.
2	Zoom Out	Click to Zoom out on the timeline bar to view the disk analysis at a higher level one step at a time
3	Center Timeline	Click the Center Timeline icon on the timeline bar will center the timeline pointer of currently playing video to the center of the timeline
4	Playback/Live Toggle	The Playback/Live button is a toggle button that changes from Play Live to Play Playback and Reverse. When Live video is playing the Button will display Play Playback.
5	Go To Search	Launches a Date and Time search dialog
6	Loop Video	Plays video between the selected range of time in a loop
7	Audio Channel Selector	User selects an audio channel to enable audio for the channel available. A check mark appears against the enabled audio channel
8	Video Playback Controls	Contains commands related to the Video control. See the Video Playback Controls section.
9	Snapshot	User can take snapshot of currently playing video stream. This operation can be achieved by clicking on Snapshot icon on toolbar. A dialog box opens which will contain the list of all the cameras. User can select cameras of his choice and click on OK button
10	Export Video Clip	When user clicks on Export video toolbar button, a dialog will open that will allow the user to select Cameras. Video for all the selected cameras is exported into a single file (multiplexed video).
11	Image Log	Not available for this device.

Item	Name	Description
12	Show Map	User is playing Live or Playback video and clicks on map control for tracking the Vehicle on the Map. The map control dialog opens with map displayed at zoom level 8 on the given route. User has option of 16 zoom levels
13	Local File Information	User can click on the Local File Information icon on timeline toolbar to view the local file information at any time while video is playing
14	Delete file	Not available for this device.
15	Visual Timeline	When cameras start streaming video, the time of video is tracked on the timeline with a current play position indicator.
16	Timeline Pointer	When play back video is streaming the timeline pointer (track bar) will indicate the current date time point where the video is playing.
17	Range Reset	This will allow users to reset the selected video range on timeline bar.

## Video Layout Manager

The Video Layout Manager controls how the videos are displayed within the program.

Figure 6: Video Layout Manager

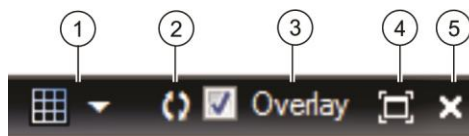


Table 3: Video Layout Manager Controls Overview

Item	Name	Description
1	Layout Selector	Change the video tile layout from the layout selector. The Layout selector will show all available layouts. Application will allow user to select any layout and display only those number of cameras
2	Camera Display Order	Changes the Camera Display Order.
3	Overlay	By selecting the overlay option user can view the video player header and footer on the video tiles which have video streaming in the viewer .On video tile header the details of camera title, date and time will be displayed. On the video tile footer the details of device name, type of video streaming (live/playback) will be displayed.
4	Maximize Restore layout	Maximize the current layout by clicking the Maximize/restore Viewer beside the layout selector. The current layout is maximized to full screen mode
5	Close	Closes all the videos streaming in the current layout tiles

## Select the Display Mode with the Video Layout Manager

1. Click on the **Layout Selector** icon to display all the display mode options.
2. Click to select a desired display mode.

Figure 7: The Layout Selector Menu



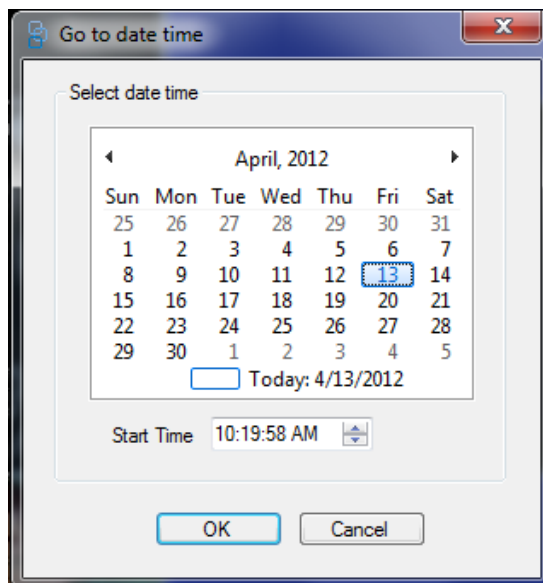
## Search Video

### Search by Date/Time

Click on the **Go To** button to launch the **Go to Date Time** Dialog Window. Select the desired Date/Time. Click on the **OK** button to start the search.

Figure 8: The Go To Date Time command and Dialog Window

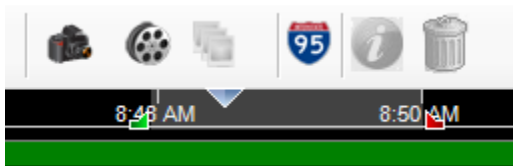




### Search by Timeline Bar

Hover the mouse over the **Timeline Bar** where the cursor is located. When the Range Selection indicators appear you can move (slide) the Selection Start Time indicator and the Selection End Time indicator to select the time range.

Figure 9: Range Selection Indicators



Click the **Zoom In** icon to magnify the time frame. Click the **Zoom Out** icon to reduce the time frame. Event types are represented by different colors. Please refer to the following chart for the meaning of events.

Table 4: Event type color code

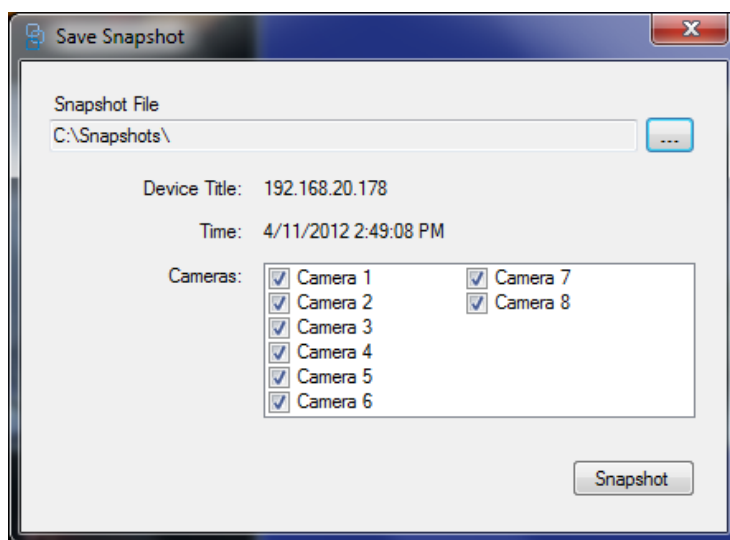
Color	Event Type
Gray	No event
Blue	Video Loss
Orange	Motion
Red	Alarm
Yellow	Other event

## Snapshot and Archive

### Export Snapshot

You can take snapshot of the playing video stream. This operation can be achieved by clicking on the **Snapshot** icon on the toolbar. A dialog box opens which will contain a list of all the cameras. Select the cameras and click on the **OK** button. The destination folder for the Snapshot files is written to the System Settings snapshot folder. You can select a location for the files by clicking on the ... (Browse) button.

Figure 10: The Save Snapshot Dialog Window

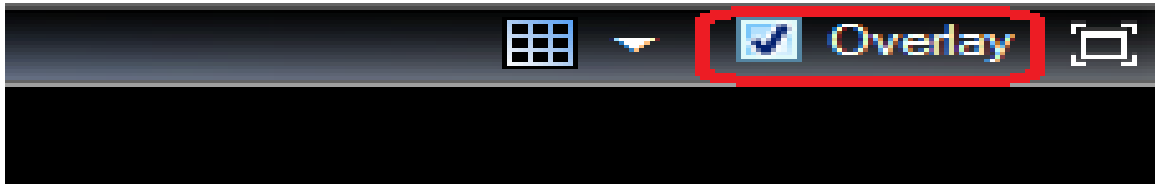


While the snapshots are generated in the background if there is any delay in generating the snapshots, the snapshot icon will be disabled until it completes generating the snapshots and then gets enabled. Mean while use can perform other operations. The result of generating the snapshot is displayed on the status bar as message.

### View Video Information

Displays the header and footer data for the selected video tile. Click the **Overlay** check box on the **Video Layout Manager Toolbar** to enable.

Figure 11: The Overlay check box



The following information is displayed on the header and footer of the video tile:

- Camera title
- Video play time
- Device name
- Video stream state
- Close video tile

# Specifications

---

<b>MobileView 3000 Docking Station</b>	
Supported Video Format	NTSC/PAL (Auto-Detect)
Video Compression	H.264
LED indicators	2 LED's to indicate power and hard disk activity
Power switch	Power ON/OFF
Interface Connector	USB Type B connector
Power Connector	6 pin 5V/12V DC
Power	DC 5/12V
Operating Temperature	0°C ~ 50°C (32 °F ~ 122°F)
Dimensions	155 mm × 47mm × 277mm (6.1" × 1.8" × 10.9")
Weight	1.35 kg (3.0 lbs)

---