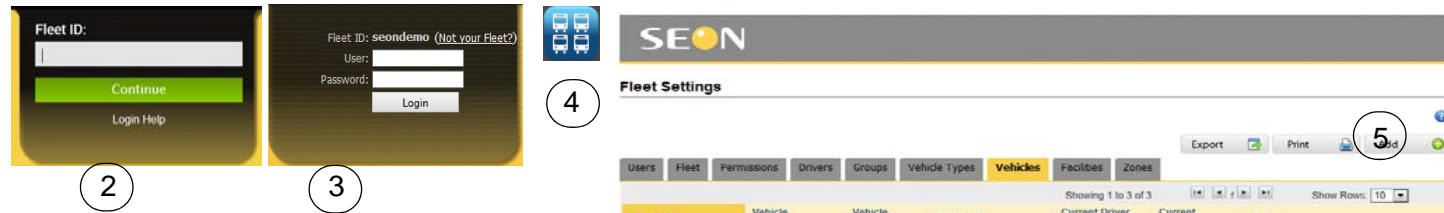


6 Login to vMax Live Plus and Add Vehicle Record

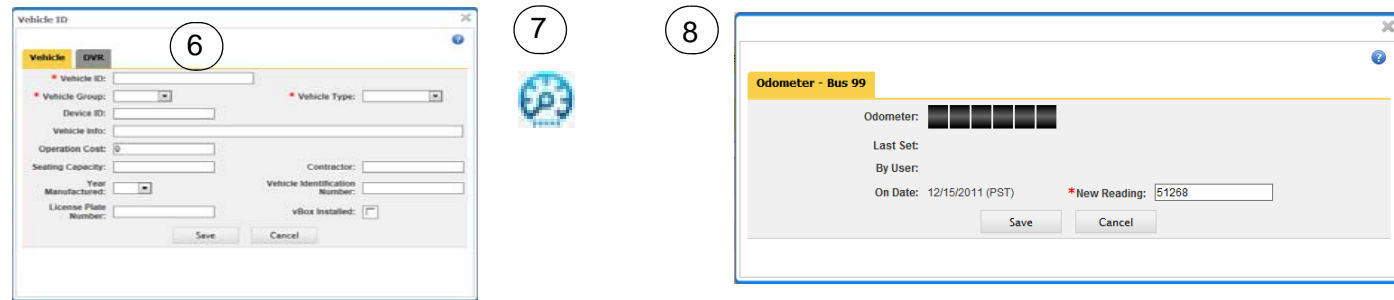
Use the following steps to set up the VML Controller in vMax Live Plus and complete the installation.

1. In a web browser, go to www.vmaxlive.net.
2. Enter the Fleet ID as provided by Transportation Director or Fleet Administrator, and click Continue.
3. Enter the user name and password and click Login.
4. In vMax Live Plus, click the blue Fleet Settings button.
5. In Fleet settings, select the Vehicles tab, and on the Vehicles tab, click Add.



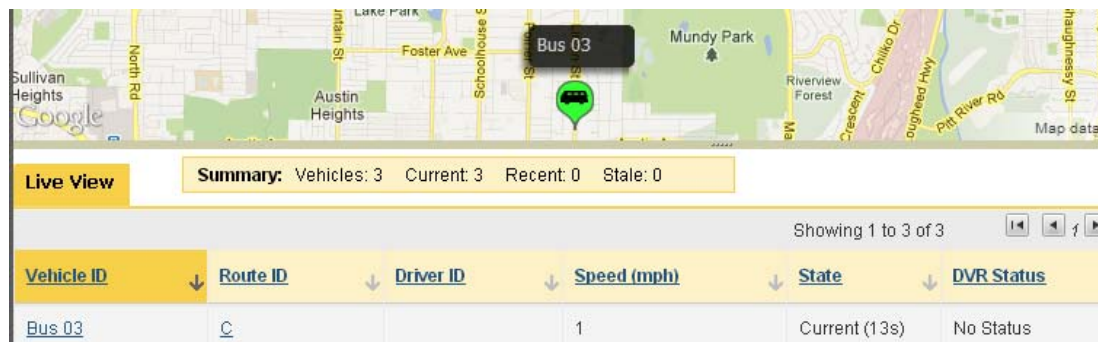
The Vehicle window appears.

6. On the tabs, enter the data recorded in step 1. Fields marked with red asterisks are mandatory. If a Seon DVR is installed on the bus, click the DVR tab and Select the DVR type. Click Save.



7. In the Vehicle tab list view, locate the vehicle record and click the Odometer icon to open the Odometer window.
8. Enter the vehicle odometer reading. Click Save.
9. In the vMax Live Plus main map view, with the vehicle running, confirm that the vehicle icon appears on the map and list views.

It may take a few minutes for the cellular network to transmit the GPS signal to vMax Live Plus.



Once the vehicle is visible in vMax Live Plus, the installation is complete.

Contact Seon

Toll Free Telephone	1.877.630.7366	Email	sales@seon.com
Toll Free Fax	1.866.664.3677	Web site	www.seon.com



VML Controller Quick Start Guide

The Seon VML Controller works with vMax Live Plus to track fleet and vehicle activity in real time. The Quick Start guide is intended as a reference. See the VML Controller Installation and Commissioning Guide 700-0154 for detailed procedures.

CAUTION: Confirm DVR Has Latest Firmware Version

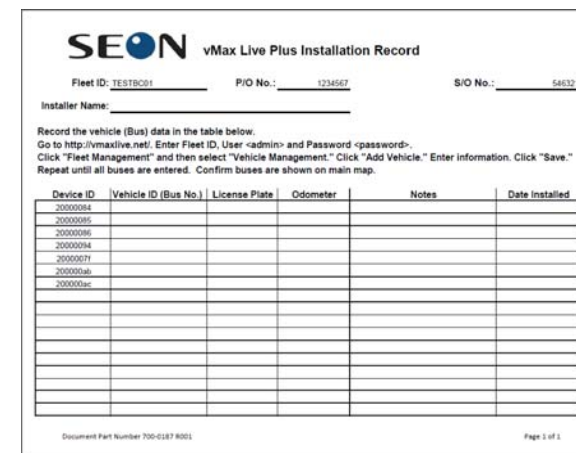
To display the DVR status in the vMax Live Plus user interface, the TL, MX, and DX series DVR firmware must be up to date. The TX series DVR firmware supports VML Controller communication. Confirm and update the DVR firmware using the USB stick and instructions in the supplied VML-INSTLPKG.

NOTE: In the following table, the current firmware version required on the DVR means you need that version loaded on the DVR in order to upgrade to the provided version. If your DVR does not have the listed current version loaded, contact Seon technical support.

DVR	Current Firmware Version	Firmware File Name on USB	Upgraded Firmware Version	New Smart-Link Required
TL4/2	1.0.x (x = any numbers)	trooper.bin	1.5.0.0131.92.5	N/A
MX4	1.0.1.0099	condor.bin	1.0.1.0099.95.9	Use the Smart-Link supplied in the VML Controller kit.
MX-HD	1.0.x (x = any numbers)	SeonMxHD.bin	1.5.1.x (x = any numbers)	
DX12	1.0.2.0029,92.9	SeonDX12.bin	1.0.2.0029,93.0	

1 Record Vehicle Installation

Seon provides fleet administrators with an Installation Record that can be filled out manually or electronically. The information is needed to set up the vehicle record in vMax Live Plus, in step 6 of this guide. The VML Device ID is on a label on the face of the VML Controller.



If the Installation Record is unavailable, contact the fleet administrator for it or create a form and record the following vehicle information for each VML Controller that is installed.

Device ID:	Bus ID:
License Plate No.:	Odometer:
Date Installed:	Notes:

If you record this information without the Installation Record, ensure the fleet administrator gets all the information. The recorded information is required to complete the vehicle record in vMax Live Plus, as described in step 6.



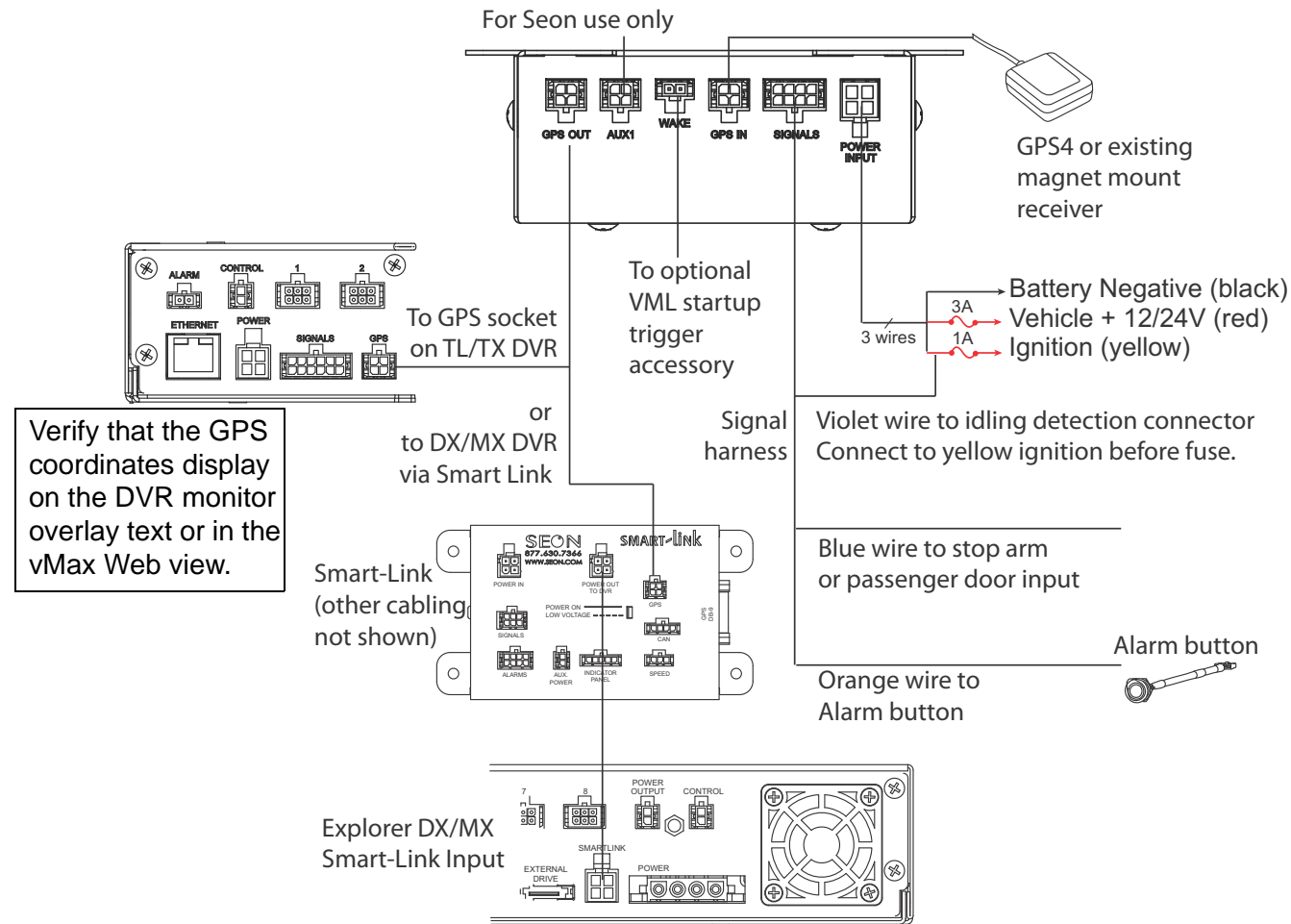
2 Install VML Controller

Use the following diagram to connect the VML Controller with the other system components.

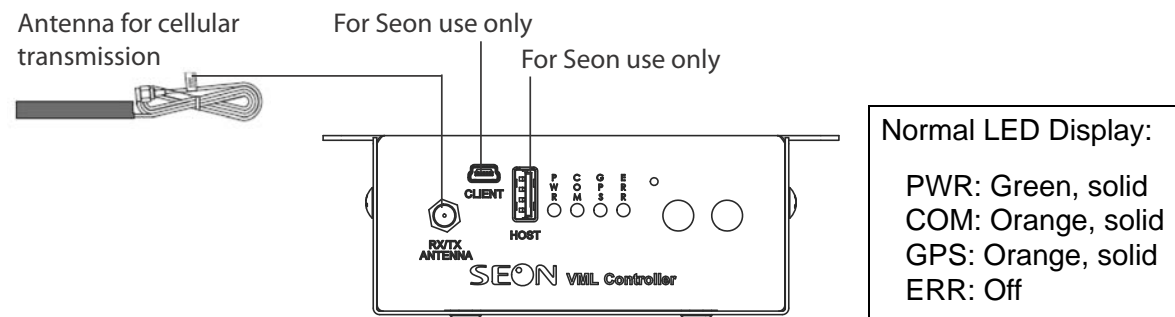
VML Controller

Typical System Setup, with optional Smart-Link and DVR

VML Controller Back Connections



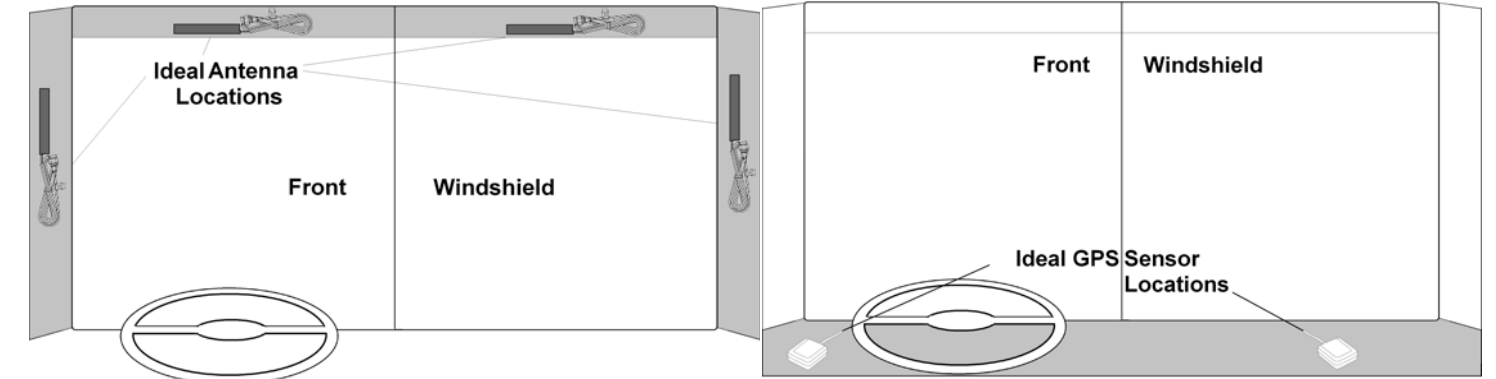
VML Controller Front Connections



3 Install Antenna and GPS Sensors

Install the Antenna on a glass surface, not metal.

Install the GPS Sensor with a clear view of the sky.

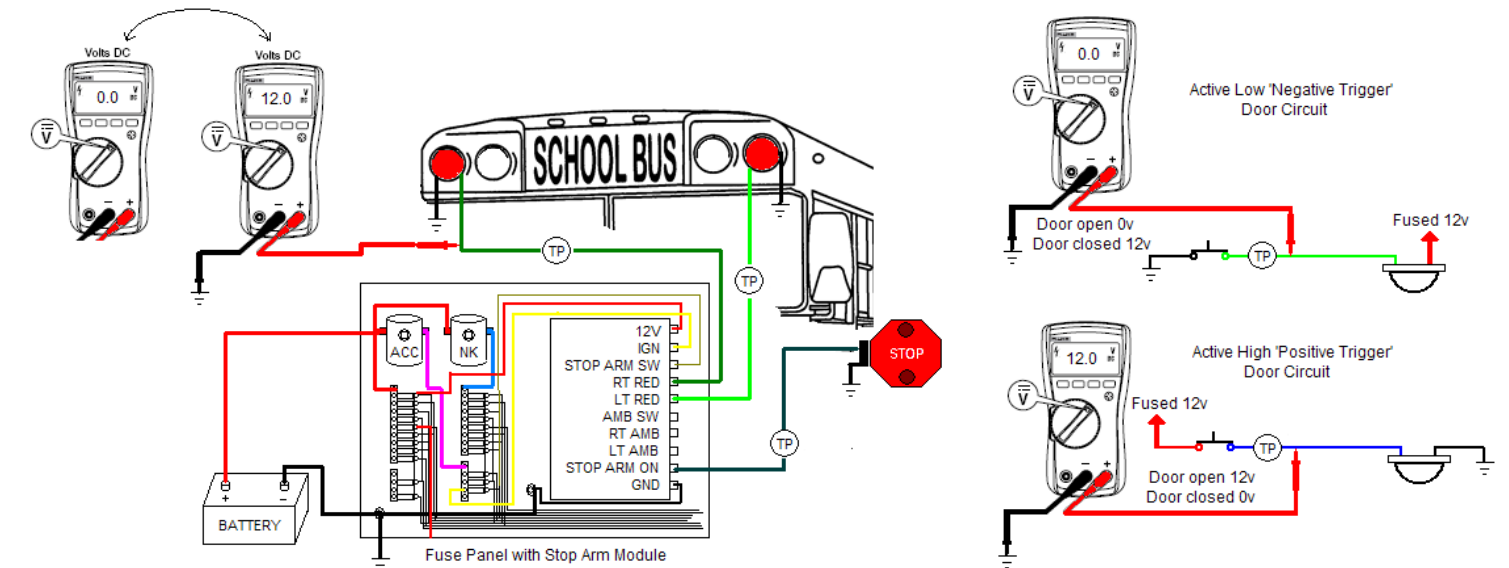


CAUTION: Damage to the antenna and the VML Controller can result if the antenna is installed on a metal surface.

4 Install Signal Connections

School bus stop arm signal connections.

Transit bus stop signal connections.



5 Hardware Checklist

Confirm the following are all complete for the VML Controller installation.

✓ Harnesses	✓ System
The power supply cable is at least 11 VDC.	Switch the vehicle ignition ON.
Cables and the harnesses are properly secured.	Confirm DVR firmware is up to date.
No sharp metal edges are touching the cables or harnesses.	VML Controller LED indicators work properly.
Connections are solid (no shorts).	GPS sensor and connections to DVRs are working right.
✓ VML Controller	✓ Installation Record Details
Check for tight mounting of hardware and connections.	Enter the recorded values in vMax Live Plus or give the recorded numbers to the vMax Live Plus fleet administrator.