

# vMax Trac to MDT Quick Install Guide

## About

This guide explains how to connect the vMax Trac RFID card reader to an MDT.

## Install Kit Contents

- RFID Card Reader x1  
Part#: 032-1029
- RFID Power USB Harness x1  
Part#: 060-1093
- RFID Extension Cable x1  
Part#: GPS4-CBL
- Hex Self-Drive Screws x4  
Part#: 600-0038

## LED Functions

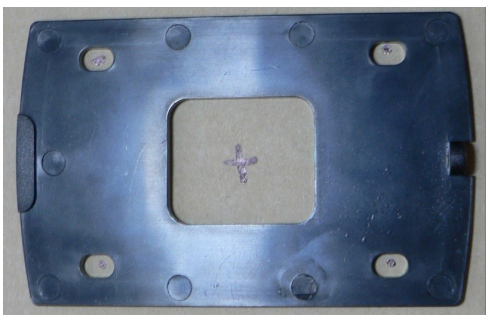
- RED - Ready for reading
- GREEN - Reading

## Installation Steps

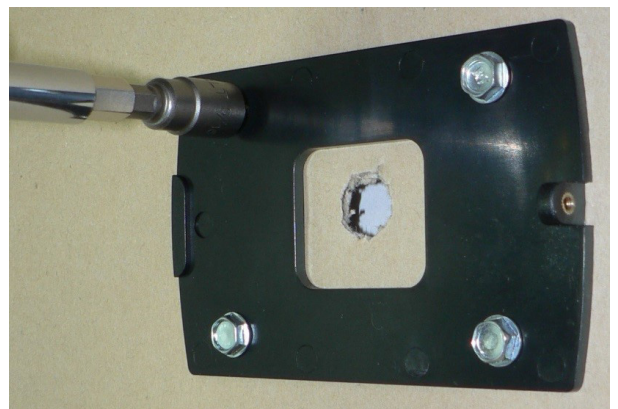
1. Remove the retainer screw at the bottom of the card reader and remove the back plate.
3. Drill out the 1/2" center hole and mount the backing plate with the 4 self-driving hex screws.



2. Position the back plate of the card reader on the vehicle surface, then mark the screw and center-hole positions.



3. Drill out the 1/2" center hole and mount the backing plate with the 4 self-driving hex screws.



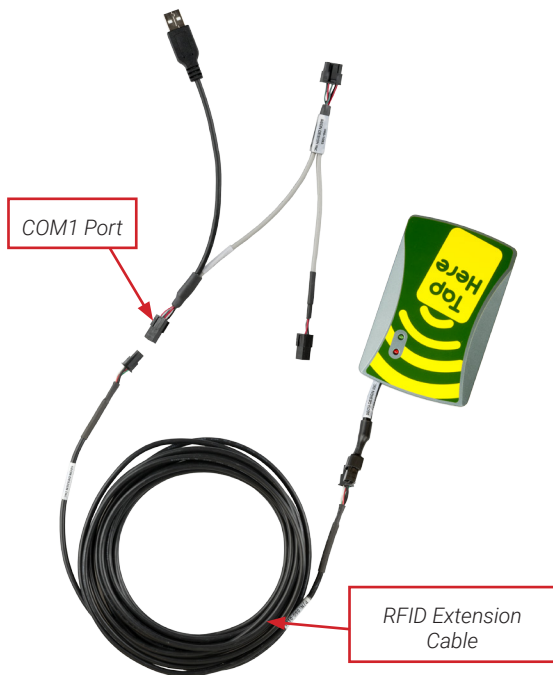
4. Run the RFID extension cable through the center hole and connect one end to the card reader (both ends are interchangeable).



5. Re-attach the card reader's back plate.



6. Connect the other end of the extension cable to the **COM1** port of the RFID Power USB Harness.



7. Connect the **RFID Power** and **USB** harness to the MDT.



## Support Information

Seon Design Inc.  
Unit 111, 3B Burbidge Street  
Coquitlam, BC , Canada V3K 7B2

Phone: 1.877.630.7366  
Fax: 1.866.664.3677  
Service Email: [service@seon.com](mailto:service@seon.com)