



Software User Manual

MobileMule™ Player

Version 1.0



Directory

1.	Installation Instructions of the MDVR Player.....	1
1.1	Select installation language	1
1.2	Setup Wizard	1
1.3	Select installation path	2
1.4	Select Start Menu Folder	2
1.5	Select Additional Task	3
1.6	Finish setup	3
1.7	Click "Finish"	4
2.	Login interface	4
3.	Playback Analysis Interface	5
3.1	File Query	5
3.2	Query results.....	5
3.3	Merge video files.....	6
3.4	Playback video	6
3.4.1	Icon Glossary.....	7
3.5	AVI Converter.....	7
3.5.1	Multi-Files converted into AVI format.....	8
3.6	Report	9
3.7	Log search.....	9
4.	System setup.....	10
5.	Users Management	10

1. Installation Instructions of the MDVR Player

1.1 Select installation language

- a) Double-click the installation file
- b) Run file to show language selection
- c) Select language and press confirm



Figure 1.1 language selection

1.2 Setup Wizard

After selecting language, Setup Wizard screen will recommend closing applications. Click "Next" to continue.



Figure 1.2 Installation interface

1.3 Select installation location

Select install location then click "Next"

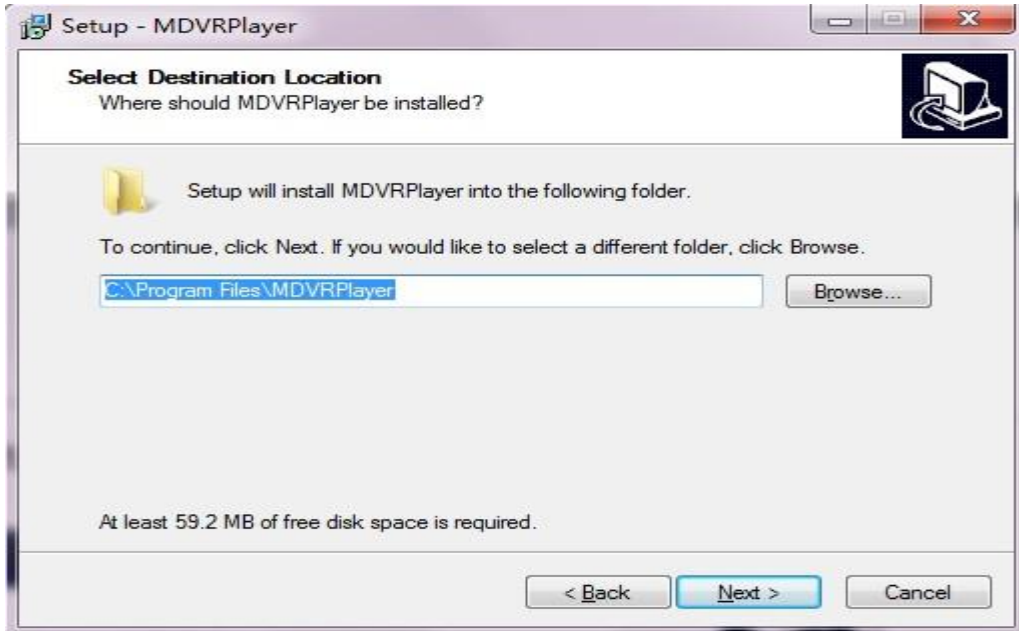


Figure 1.3 installation path interface

1.4 Select Start Menu Folder

Select location of program's shortcuts. Click "Next" to continue.

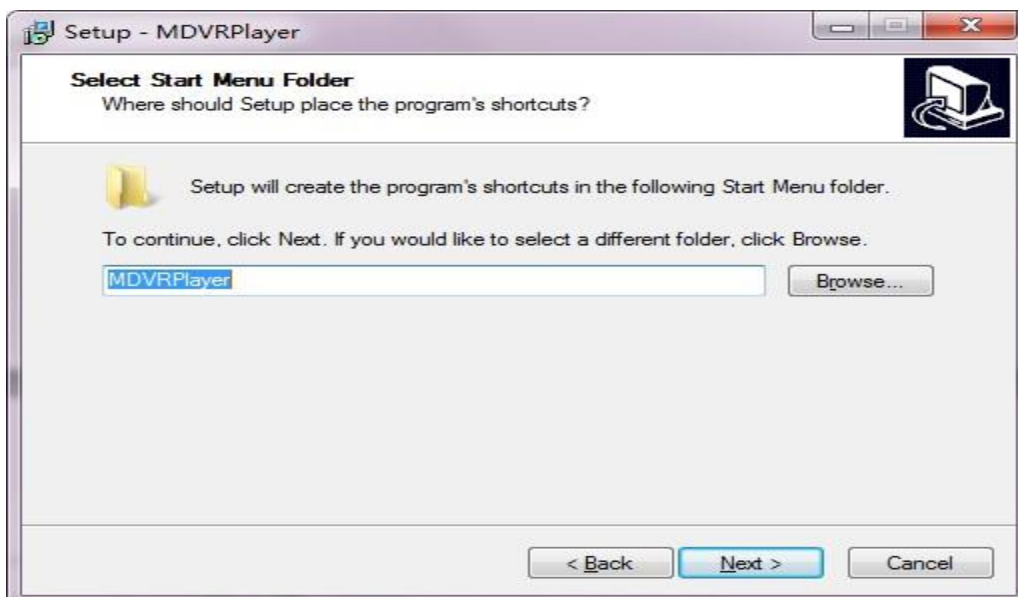


Figure 1.4 select placement

1.5 Select Additional Task

In this interface, choose whether to create optional desktop icon. Click "Next" to continue.

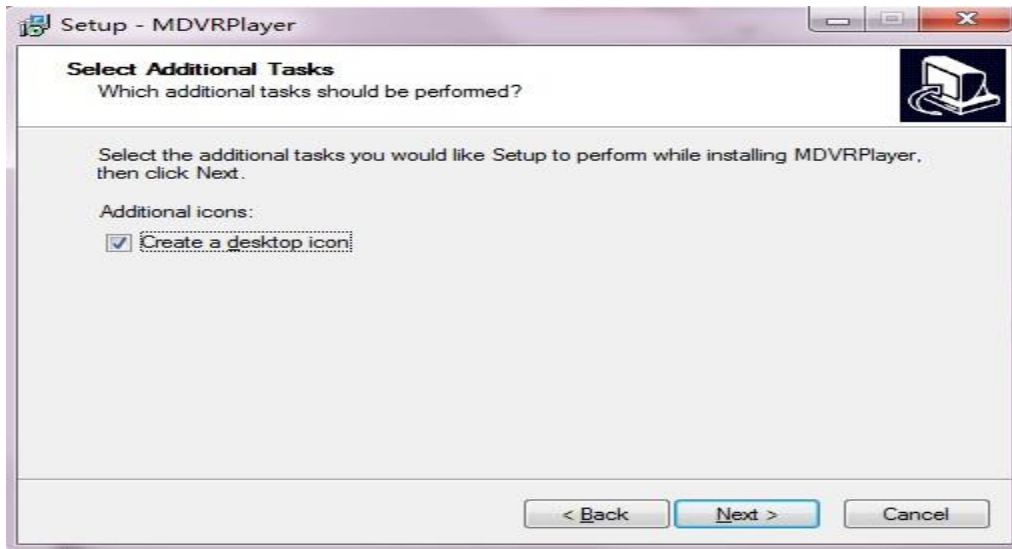


Figure 1.5 Choose whether to create a desktop icon

1.6 Finish Setup

Review locations of files. Click "Install" to finish Setup Wizard.

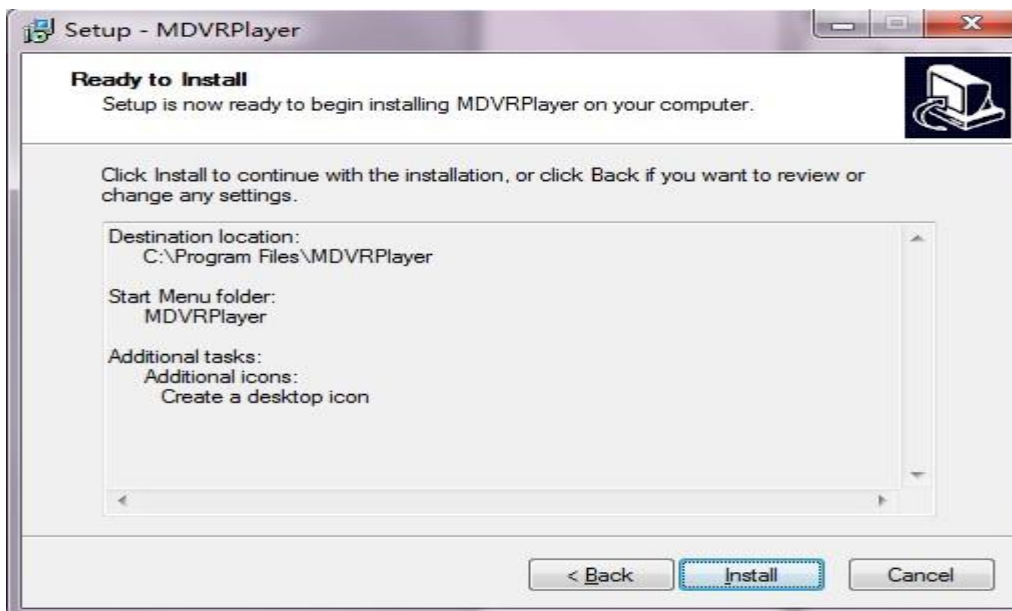


Figure 1.6 Execute the installation

1.7 Click "Finish"



2. Login interface



To open program, double-click on program icon. Icon would be located on the Desktop if optional shortcut was selected.



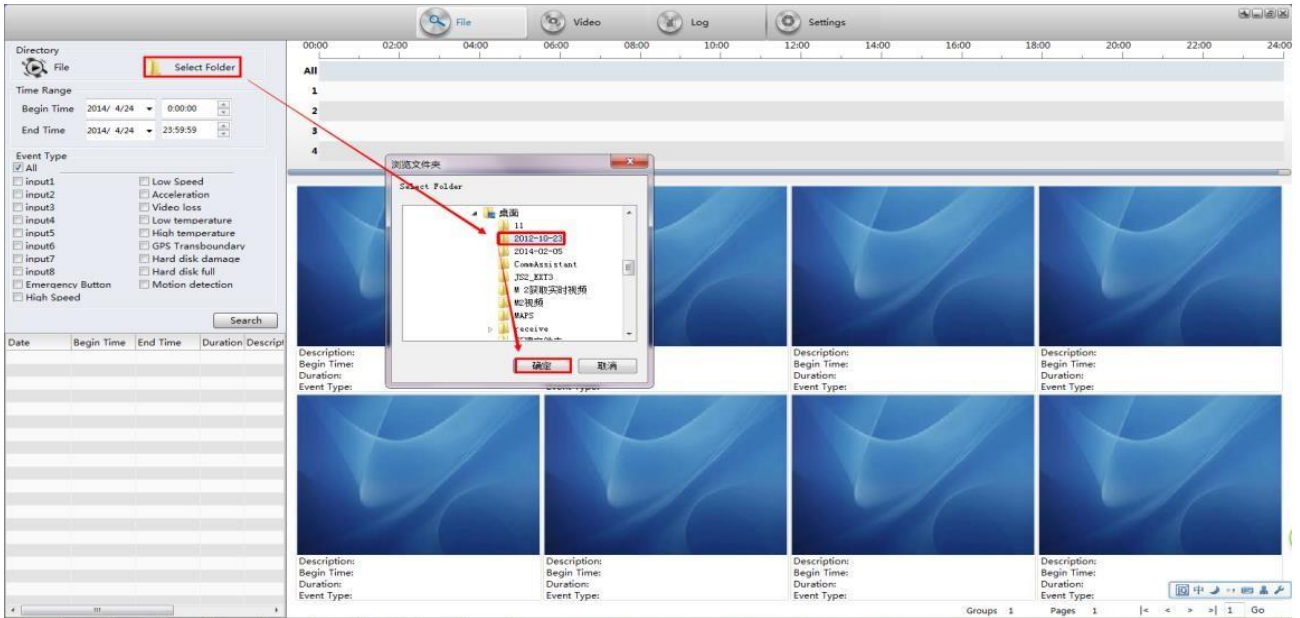
To enter program for the first time, use default user / login setting.
(This password can be changed later)

Username : admin
Password : 000000

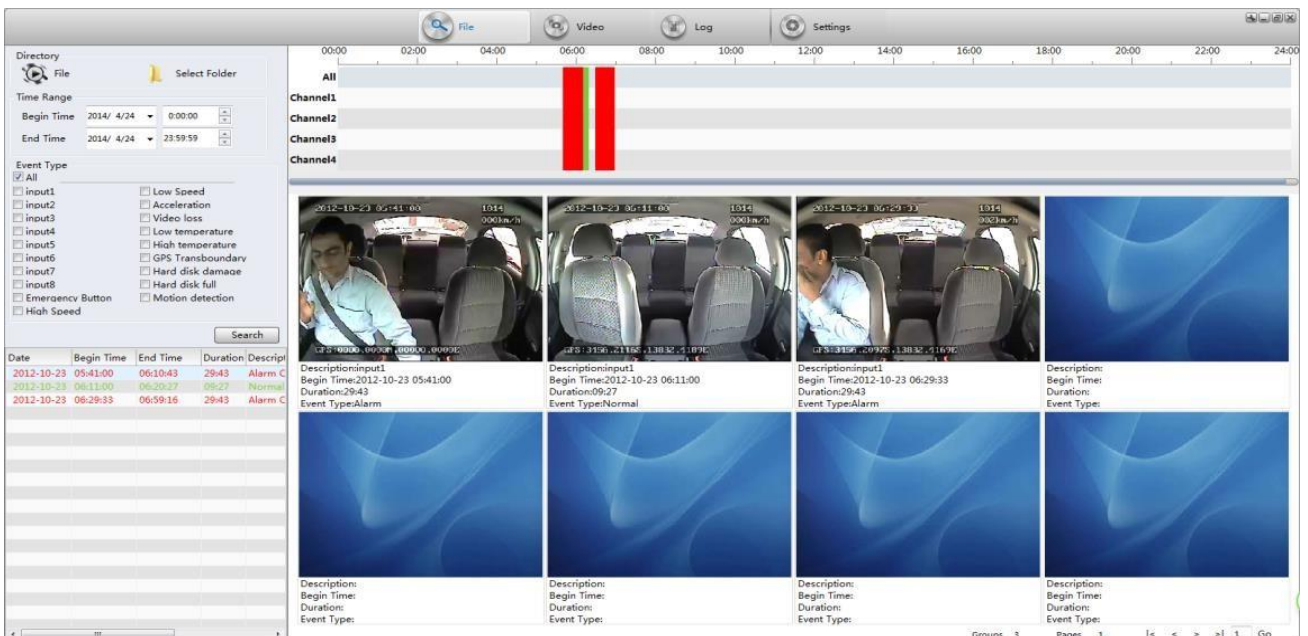
3. Playback Analysis Interface

3.1 File Query

To play video, click "select folder" button to browse desired file for playback.

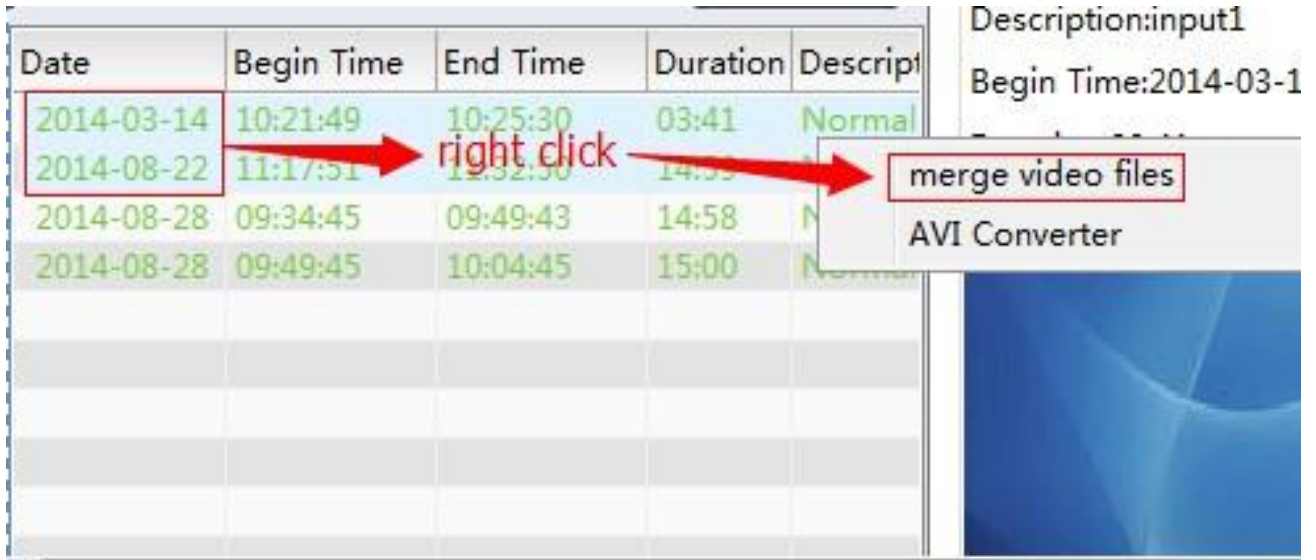


3.2 Query results:



3.3 Merge video files

Press shift button and choose files you want to merge. In the example below, the action will merge video files from all 4 channels into 4 video files, and each channel will have 1 video file.



3.4 Playback video

You can see the current status of your vehicle on the map.

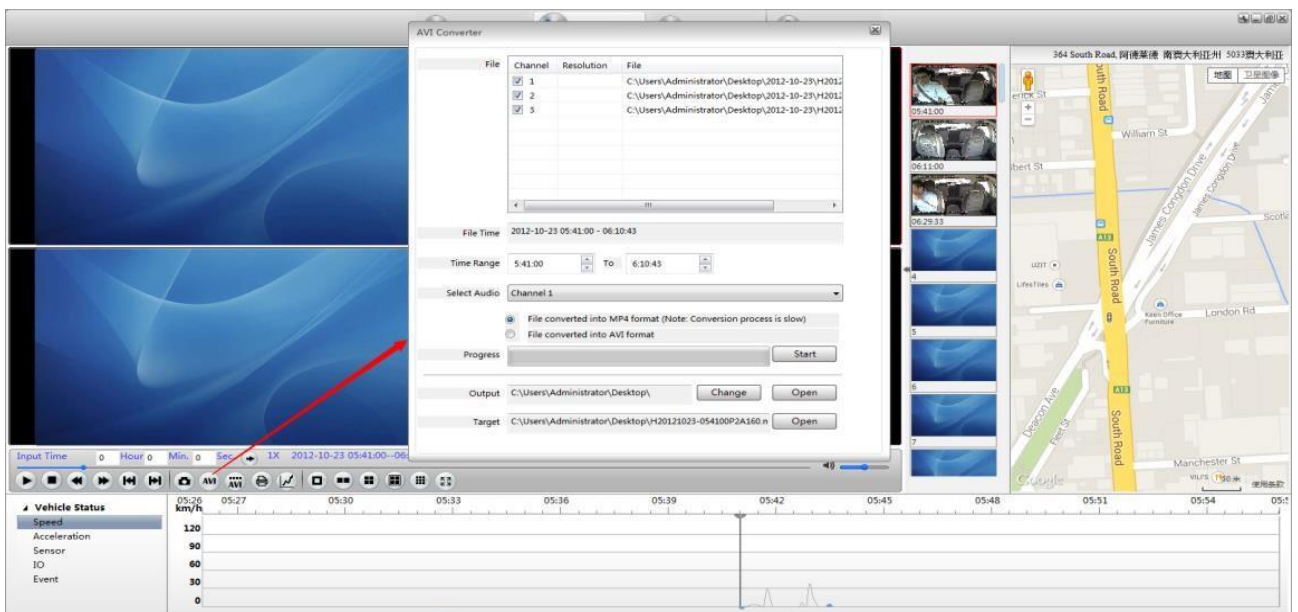


3.4.1 Icon Glossary

ICON	FUNCTION
	Play/Stop
	Stop
	Slow play
	Fast play
	Previous
	Next
	Snapshot
	I frame forward
	1 seconds

3.5 AVI Converter

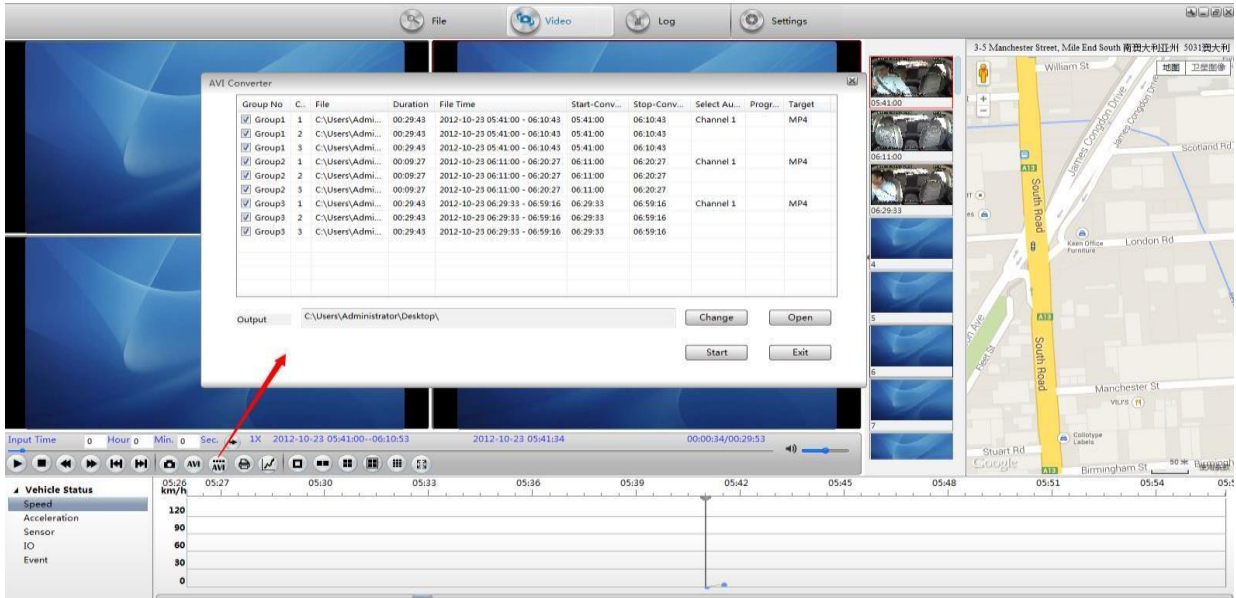
Single channel converter. This option converts 4 video files of 4 channels into 1 video file. *NOTE:* Users can only convert video file with single time ranges.



3.5.1 Multi-Files converted into AVI format

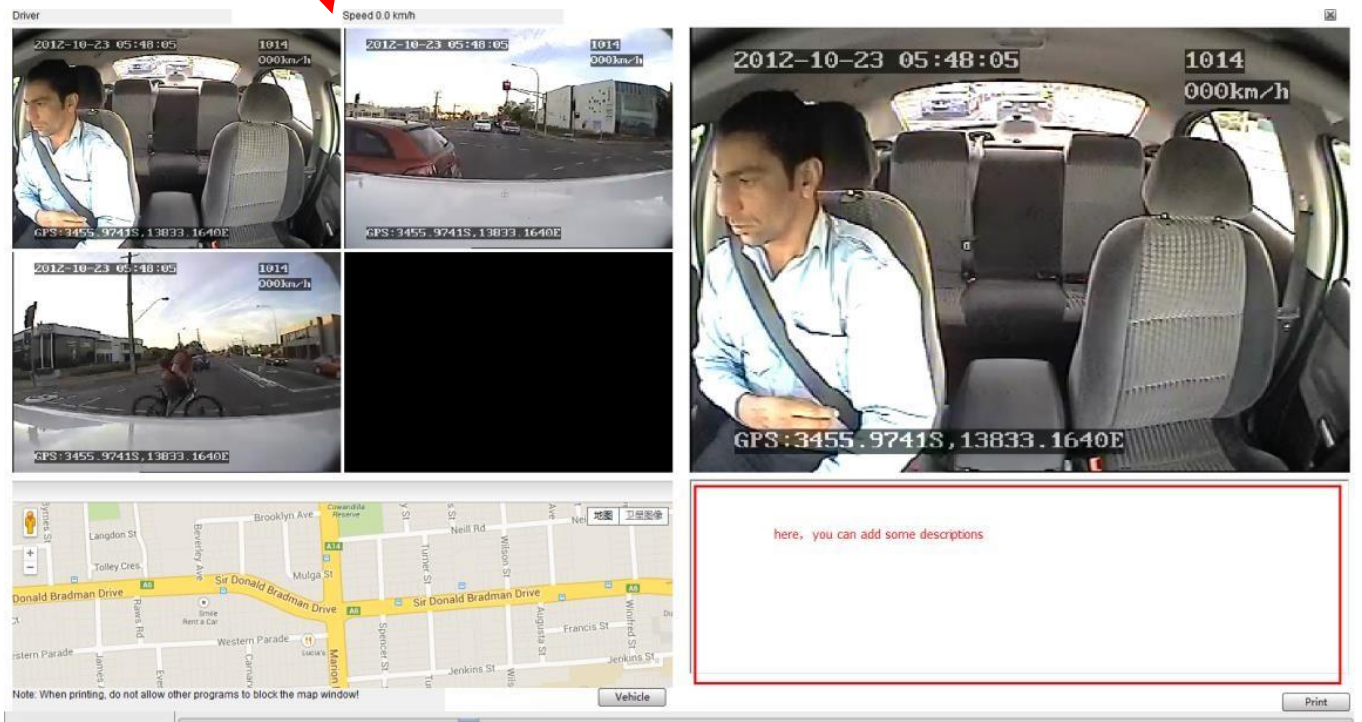
This conversion process is similar to the AVI conversion process above, but this conversion can be applied to video with multiple time ranges.

After the conversion, each time range will have 1 video file.



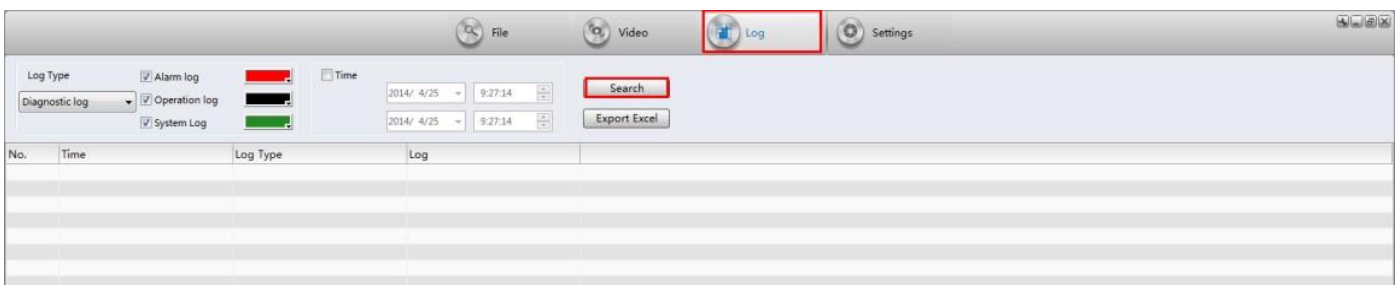
3.6 Report

You can add information in the blank area when you print this page.



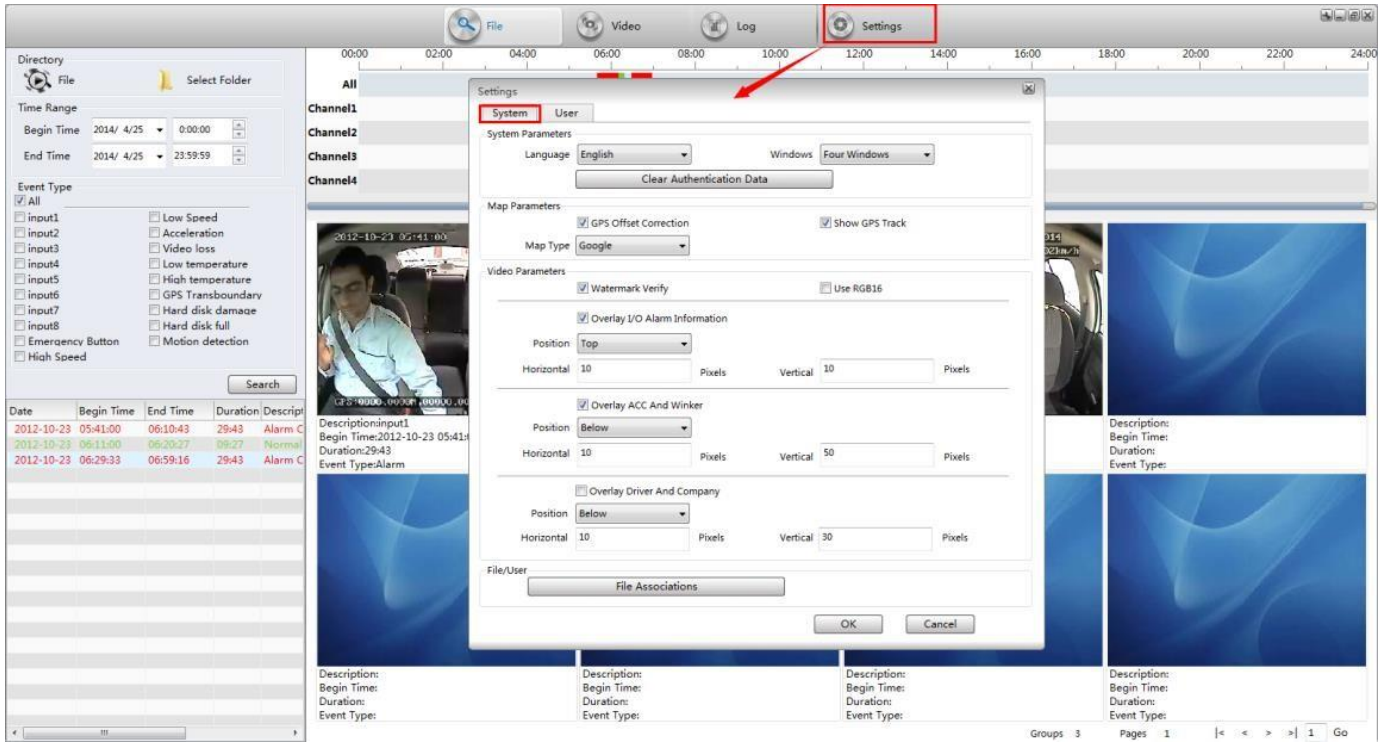
3.7 Log search

Click "search", add your SD card, and you'll see the log from that card.



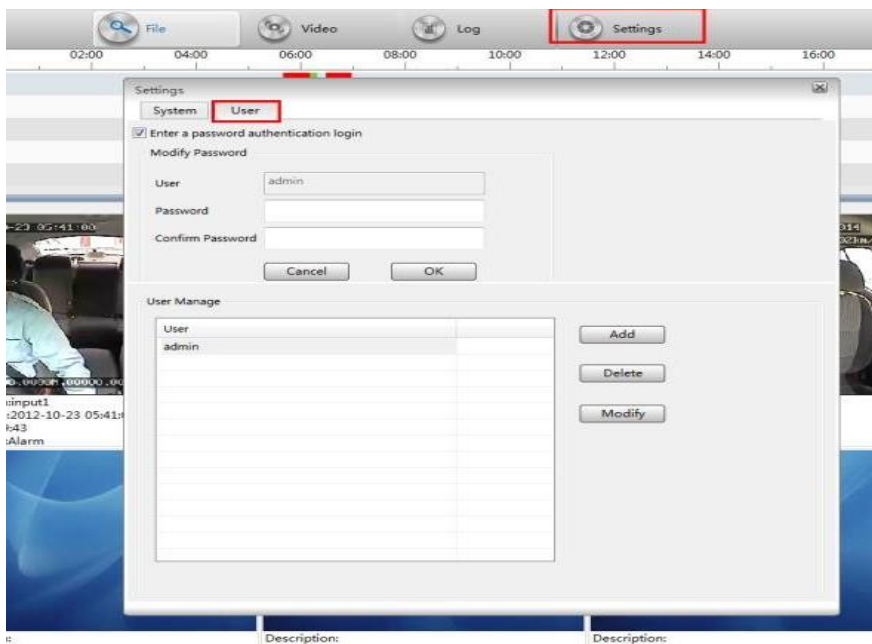
4. System setup

- Languages: English, Turkish, Thai, Chinese Simplified, and Chinese Traditional.
- Playback files: Now supports the playback of video file formats.
- Maps : Google Maps and cancel GPS offset correction.
Also supports MapInfo. Baidu Maps
- Parameters: Set video parameters according to user requirements.
Users can see parameters during video playback.



5. Users Management

Administrator can add users, delete users, alter users, and change user passwords.





If you have any questions
about this product, contact:

***Rear View Safety, Inc.
1797 Atlantic Avenue
Brooklyn, NY 11233
800.764.1028***

***Better Cameras. Better Service.
IT'S OUR GUARANTEE.***

