

RTSP Connection Information

C5x1PD, C8Q2PD & C12F2PD Series Cameras

Thank you for choosing Safe Fleet! You'll need the information on this card to connect your camera to a 16-port Network Switch (part # NS18POE16) or directly to a TH8, NH16, NH16v2, DH4v2, or DH6/8 recorder's rear panel port via RTSP. If you have any questions or need assistance, please contact our Safe Fleet Passenger Transportation support team at ptsupport@safefleet.net.

1 Connect the Camera

Attach to an Ethernet port on the applicable device:

- 16-port network switch (NS18POE16)*
- NH16 or NH16v2 recorder rear port*
- DH4v2, DH6/8, or TH8 recorder rear port – requires installation of a POE injector. For more information, see the DH Series 48V POE Injector Kit Quick Installation Guide (part # 700-1279) or the TH8 & NH16K 48V POE Injector Quick Installation Guide (Part #700-1228).

⚠ Warning: Do not exceed power output limits

*The network switch and the recorder have maximum power budgets. See the device documentation for details.

2 Configure the Recorder Port

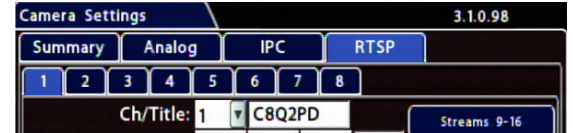
The rear panel port must be set correctly to support either the network switch or a single camera connection.

For details, refer to the recorder documentation applicable to your installation:

- NH16 or NH16v2 Hybrid NVR Installation and Configuration Guide (NH16 - part #700-1223, NH16v2 - part # 700-1300) - see "Setting up the Network Switch and Video Sources" in "Setting up the NVR".
- DH4v2 or DH6-8 Installation Guide (part #700-1319 or 700-1278) - see "Adding an IP Camera" in "Setting up the DVR".
- TH8 Installation and Configuration Guide (part #700-1123) - see "IP Cameras and RTSP Video Sources" in "Recording Settings".

3 Configure Recorder Camera Settings

1. In the recorder's configuration menus, select **Record** → **Camera** to display Camera Settings.
2. Click the **RTSP** tab (TH8 recorder shown):



3. Use the **Ch/Title** dropdown menu to select a logical channel (defines the display location in live and playback grid views), and optionally enter a name for the stream pair.

💡 Tip: Changing camera credentials

If you use the Web client to change the camera's default username or password, you must update those fields in the recorder's **Camera Settings** → **RTSP** tab or the connection will fail.

⚠ Note: Local Video Output - Max. Resolution

Camera feeds from the recorder's front-panel VIDEO jack and rear Expansion port are limited to 3-megapixel resolution (set for the primary stream). This limit does not apply to video accessed via the Web browser interface.

RTSP Connection Information

C5x1PD, C8Q2PD & C12F2PD Series Cameras

Thank you for choosing Safe Fleet! You'll need the information on this card to connect your camera to a 16-port Network Switch (part # NS18POE16) or directly to a TH8, NH16, NH16v2, DH4v2, or DH6/8 recorder's rear panel port via RTSP. If you have any questions or need assistance, please contact our Safe Fleet Passenger Transportation support team at ptsupport@safefleet.net.

1 Connect the Camera

Attach to an Ethernet port on the applicable device:

- 16-port network switch (NS18POE16)*
- NH16 or NH16v2 recorder rear port*
- DH4v2, DH6/8, or TH8 recorder rear port – requires installation of a POE injector. For more information, see the DH Series 48V POE Injector Kit Quick Installation Guide (part # 700-1279) or the TH8 & NH16K 48V POE Injector Quick Installation Guide (Part #700-1228).

⚠ Warning: Do not exceed power output limits

*The network switch and the recorder have maximum power budgets. See the device documentation for details.

2 Configure the Recorder Port

The rear panel port must be set correctly to support either the network switch or a single camera connection.

For details, refer to the recorder documentation applicable to your installation:

- NH16 or NH16v2 Hybrid NVR Installation and Configuration Guide (NH16 - part #700-1223, NH16v2 - part # 700-1300) - see "Setting up the Network Switch and Video Sources" in "Setting up the NVR".
- DH4v2 or DH6-8 Installation Guide (part #700-1319 or 700-1278) - see "Adding an IP Camera" in "Setting up the DVR".
- TH8 Installation and Configuration Guide (part #700-1123) - see "IP Cameras and RTSP Video Sources" in "Recording Settings".

3 Configure Recorder Camera Settings

1. In the recorder's configuration menus, select **Record** → **Camera** to display Camera Settings.
2. Click the **RTSP** tab (TH8 recorder shown):



3. Use the **Ch/Title** dropdown menu to select a logical channel (defines the display location in live and playback grid views), and optionally enter a name for the stream pair.

💡 Tip: Changing camera credentials

If you use the Web client to change the camera's default username or password, you must update those fields in the recorder's **Camera Settings** → **RTSP** tab or the connection will fail.

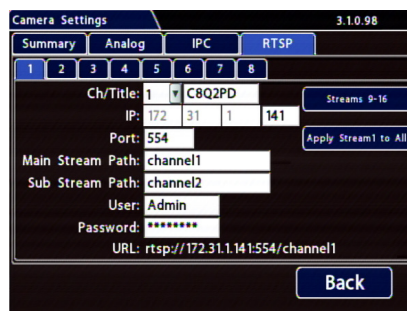
⚠ Note: Local Video Output - Max. Resolution

Camera feeds from the recorder's front-panel VIDEO jack and rear Expansion port are limited to 3-megapixel resolution (set for the primary stream). This limit does not apply to video accessed via the Web browser interface.

4 Enter RTSP Connection Details

- **IP** – <refer to “Typical IP Addresses” below>
- **Port** – 554
- **Main Stream Path**
 - C5 cameras – stream1
 - C8 and C12 cameras – channel1
- **Sub Stream Path**
 - C5 cameras – stream2
 - C8 and C12 cameras – channel2
- **User** – Admin
- **Password** – 11111111

Click **Back** to save RTSP settings.



(TH8 recorder with C8 camera shown)

Typical IP Addresses

The camera's default static IP address is 172.30.1.1. When connected to the network switch or directly to a recorder, the camera's IP address is assigned based on the device and port:

Connected Device	IP Address Range	Port Name	IP Address
16-port Network switch (NS18POE16)	172.31.1.101 through 172.31.1.116	<P01-P16>	Change the last 2 digits based the port number. For example: the address for the camera connected to switch port #8 is: 172.31.1.108
NH16 & NH16v2 recorders (directly to rear-panel)	172.31.1.141 through 172.31.1.144	NH16	NH16v2
		IPCAM1	POE01
		IPCAM 2	POE02G
		WIFI	POE03
DH4v2, DH6/DH8 recorders (directly to rear panel)	N/A	Modem	POE04
		LAN2	
TH8 recorder (directly to rear panel)	172.31.1.141 and 172.31.1.142	HD Cam Expansion 1	
		HD Cam Expansion 2	

4 Enter RTSP Connection Details

- **IP** – <refer to “Typical IP Addresses” below>
- **Port** – 554
- **Main Stream Path**
 - C5 cameras – stream1
 - C8 and C12 cameras – channel1
- **Sub Stream Path**
 - C5 cameras – stream2
 - C8 and C12 cameras – channel2
- **User** – Admin
- **Password** – 11111111

Click **Back** to save RTSP settings.



(TH8 recorder with C8 camera shown)

Typical IP Addresses

The camera's default static IP address is 172.30.1.1. When connected to the network switch or directly to a recorder, the camera's IP address is assigned based on the device and port:

Connected Device	IP Address Range	Port Name	IP Address
16-port Network switch (NS18POE16)	172.31.1.101 through 172.31.1.116	<P01-P16>	Change the last 2 digits based the port number. For example: the address for the camera connected to switch port #8 is: 172.31.1.108
NH16 & NH16v2 recorders (directly to rear-panel)	172.31.1.141 through 172.31.1.144	NH16	NH16v2
		IPCAM1	POE01
		IPCAM 2	POE02G
		WIFI	POE03
DH4v2, DH6/DH8 recorders (directly to rear panel)	N/A	Modem	POE04
		LAN2	
TH8 recorder (directly to rear panel)	172.31.1.141 and 172.31.1.142	HD Cam Expansion 1	
		HD Cam Expansion 2	