



MobileView Navigator 2.0 User Guide

MobileView Navigator2.0 User Guide

This guide is item number 1072994A, November 2015.

© 2015 United Technologies Corporation. All rights reserved.

All trademarks are the property of their respective owners. Interlogix is part of UTC Climate, Controls & Security, a unit of United Technologies Corporation.

MobileView and logos are trademarks of United Technologies. Microsoft, Internet Explorer, and Windows are registered trademarks of Microsoft Corporation in the United States and/or other countries. Apple, iPad, iPhone, and iTunes are registered trademarks of Apple Inc. Android is a trademark of Google, Inc. Other trade names used in this document may be trademarks or registered trademarks of the manufacturers or vendors of the respective products.

This document applies to MobileView Depot Manager version 2.0.



www.interlogix.com/mobileview

1-855-MOBILEVIEW (662-8439)

MobileViewTS@fs.utc.com

Table of Contents

CHAPTER 1	Overview	7
	Client and Standalone Connection	7
	<i>Client Mode</i>	7
	<i>Standalone Mode</i>	7
	Log in to MobileView Navigator	8
	MobileView Navigator Window	8
	<i>Main Window Items</i>	9
	<i>File Menu</i>	10
	<i>Timeline Bar</i>	10
	<i>Application Toolbar</i>	11
	<i>Video Layout Manager</i>	12
	<i>Playback Controls</i>	12
CHAPTER 2	Basic Functions	15
	Manage Users	15
	<i>Add User</i>	15
	<i>Update User Information</i>	16
	<i>User Permissions</i>	16
	Application Permissions: Admin User	16
	Application Permissions: Normal User	17
	<i>Manage Password</i>	17
	Viewing Connected Work Stations	17
	Using Video	17
	<i>Open a Video File</i>	17
	Open a Local Video File	17
	Open Live Video	18
	Open a Playback Video	18
	<i>View Video Information</i>	19
	<i>Identify Live or Playback Mode</i>	19

View Video Tiles	19
Adjust Camera Order	20
Video Overlay	20
Maximize Video	20
Close All Video Tiles	21
Find the Time Zone	21
Maximize Video	21
Search Video	21
Search by Date and Time (Live mode only)	21
Select Video Using Timeline Bar	22
Docking Stations and Caddies	22
Display Events	23
Device Menu	24
Disk Analysis	25
Maps	26
Track a Vehicle on a Map	26
Help	27
Exit	27

CHAPTER 3 *Navigator Operations* 29

Vehicles	29
Upload Firmware	30
Get Hard Drive Log	30
Get Log File	30
Reboot Device	30
Provisioning	31
Import/Export Address Book	31
New Devices	32
Auto Discovery	32
Manually Add Vehicle	32
Vehicle Management	33
Search for Device in Vehicle Selector	33
Service Port When Device Not Added	33
Service Port When Device Added	34
Device Tasks	34
Standalone Mode Settings	34
SMTP	34
Device Diagnostics	35
Device Properties	36
Edit Depot Properties	36
Device Connection	36
Out of Network Device	37
Details	37
Capabilities	38
Device Configuration	39
Download Configuration	39
Upload Configuration File	39
Configuration Profile	40
Alarms	40

	Advanced Search	40
	<i>Search Results</i>	41
CHAPTER 4	<i>Saving and Exporting Video Tasks</i>	43
	Synchronous Download	43
	Video Stream	43
	Export Video	43
	Open Video Clips	44
	<i>Save a Video Clip from Downloaded Video</i>	44
	<i>Export Snapshot</i>	44
	<i>Save Video to Media</i>	45
	<i>Save to Folder</i>	46
	<i>Save Video from Toolbar</i>	46
	Create Evidence File	46
	<i>Creating an Image Log</i>	47
CHAPTER 5	<i>Windows Firewall</i>	49
	Add a Port or Program	49

MobileView Navigator is a Windows application used to view video, export evidence files, maintain recorders and interact with the MobileView recording system in real time. The software is considered a media player and maintenance utility. This video software enables security-related personnel to easily and remotely gather video evidence, monitor live situations, and configure and maintain a mobile video surveillance system. MobileView Navigator provides an intuitive way to find and provide relevant video content. The player is easily accessed when choosing to view video from Depot Manager and is installed on the local hard drive. It can be installed in Windows Enterprise or stand alone environments.

Client and Standalone Connection

MobileView Navigator has two different modes of operation, client mode or standalone mode. These modes are automatically selected by the software when it is started.

Client Mode

The client mode is automatically selected when a video or connection to a recorder is launched by Depot Manager. Clicking on a video link within Depot Manager starts MobileView Navigator in this mode. While in client mode, Navigator cannot discover or communicate with other recorders on the network. It relies solely on Depot Manager to tell it how to operate.

Standalone Mode

The standalone mode is automatically selected when MobileView Navigator is opened directly. This mode is used to view files on the computer by technicians in the field, and when a caddy is needed. In standalone mode the software is independent of the server, it can discover other vehicles, and has a small database where user accounts and vehicle information is stored.

MobileView Navigator is fully integrated with Depot Manager and runs in Standalone mode. Standalone mode is used when there is not a connection to the Depot Server. Changes made during Standalone mode are specific to a specified depot and are performed independently of the Depot Server.

The connection of Standalone mode to Connect mode is automatic. The current mode is displayed in the MobileView Navigator window.



Log in to MobileView Navigator

After a successful installation, launch MobileView Navigator using one of the following methods:

- Double-click on the MobileView Navigator icon on the desktop.
- Access the **Start** menu. Select **All Programs, Interlogix, MobileView Navigator**.

When MobileView Navigator launches, a login window displays. Log in as the default Administrator using the following default credentials:

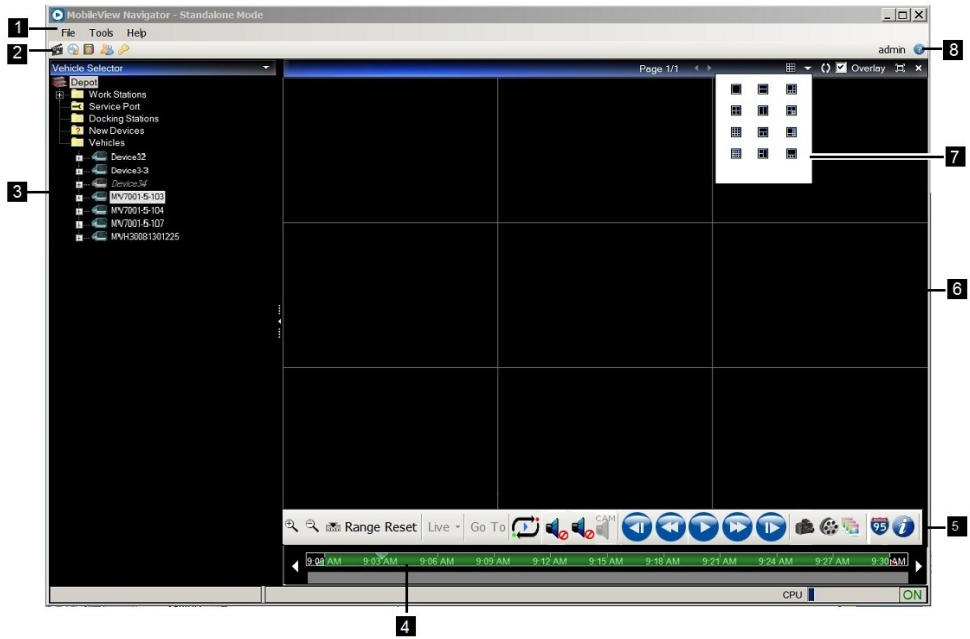
- User-name - admin
- Password - admin



If a non administrator logs in for the first time they are forced to change the default password. If the password is forgotten, click **Forgot** on the Login window and answer the challenge question.

MobileView Navigator Window

The following is an overview of the MobileView Navigator main window.



Main Window Items

Item	Name	Description
1	File Menu	Contains file, tools, and help commands.
2	Toolbar	Contains shortcuts to common operations
3	Vehicle Selector Panel	All of the folders and respective devices in folders are loaded into the Vehicle Selector tree. The state of devices loaded is represented on the tree. (Reachable/Not reachable) If any caddies are discovered they are added under Docking Stations node.
4	Disk Analysis	When a video tile is selected, the disk analysis for that camera is displayed under the timeline bar.
5	Timeline Bar	While playing video, all cameras play in sync. The video time displayed on the viewer and the time line pointer moves as the video proceeds.
6	Video Display	Displays live or playback video
7	Video Layout Manager	Contains commands related to the Video layout: Stream modes, display modes, overlay, maximize/restore, and close.
8	Help	Launches the user manual.

MobileView Navigator consists of several panels. Panels are resized by dragging the vertical left or right splitter bars. An arrow next to panel names signifies the ability to hide or show the panel. This provides custom application layout styles depending on the activities performed.

File Menu

Use the File pull down menu for file, tools, and help. Use the Choose a video file to open. To save a video file, use Save As or burn the file to a media device. Clicking **Exit** closes the MobileView Navigator software.

Use the Tools pull down menu to access the address book, manage users, change passwords, preserve video aspect ratio, update the offline GPS map, or to set MobileView Navigator settings. System settings and server settings are set using the Settings option. Identify the system for discovery using the Discovery tab.

Access the Help pull down to open the MobileView Navigator help and also to view the current version of the MobileView Navigator software that is running.

Timeline Bar

Video is managed once it is loaded in the Video Display panel on the Timeline toolbar. The Timeline toolbar features a toolbar, timeline, playback controls, and stream switching capabilities.

Use the toolbar to select all video tiles in the viewer, zoom in and out on the timeline, center the timeline, perform a Go To search, and view video in live or playback mode. Use the Snapshot option to take a snapshot of the current play time of a selected video tile and save it to the hard drive to export.

Timeline and video controls are only enabled while viewing video.



Item	Name	Description
1	Zoom In	Expands the disk analysis at a detailed view.
2	Zoom Out	Opens the disk analysis at a general or smaller view.
3	Center Timeline	Centers the timeline pointer of the currently playing video to the center of the timeline.
4	Range Reset	Resets the selected video range on the timeline bar.
5	Playback/Live Toggle	Toggles from Play Live to Play Playback. When Live video is playing the icon displays Live.
6	Go To	Opens a window to choose a specific date and time of video. Video pulls from the device for the selected date and time.
7	Loop Video	Plays video between the selected range of time in a loop. When looping the video, a red indicator displays in the center of the icon. Click the looping icon to exit looping video.
8	Audio Controls	Audio Channel Selector, Camera Audio Selector, and Video Audio Selector. Select audio on or off.

Item	Name	Description
9	Video Playback Controls	Contains commands related to the video control. Refer to the Video Playback Controls section.
10	Snapshot	Takes a screen snap of the currently playing video stream.
11	Export Video Clip	Opens a window to select cameras. Video for all the selected cameras is exported into a single file (multiplexed video).
12	Image Log	Opens the Image Log window. Select an exported video file from the device or docking station.
13	Show Map	A map displays when playing live or playback video. Use to track a vehicle on the map. The map control window opens with the map displayed at zoom level 8 on the given route. There are 16 zoom levels.
14	Local File Information	Views the local file information at any time while video is playing.
15	Stream	Choose the type of stream to use, primary or alternate.

Application Toolbar

The available options on the application Toolbar vary depending upon the user login.



Item	Name	Description
1	Open video file	Browse to the desired video file and select the file to open.
2	Burn Video File to Media	Launches the CD/DVD burner or USB window with options to select files for burning to a CD / DVD or to write to USB.
3	Address Book	Opens the address book of Vehicles. Use to add or remove vehicles and also import and export vehicle lists.
4	User management	Opens a list of users. Double clicking a user name opens the User Properties window.
5	Password Management	Launches Password Management windows.

question, and change the password.

Video Layout Manager

The Video Layout Manager controls how the videos are displayed in MobileView Navigator.



Item	Name	Description
1	Paging	Open multiple pages of video tiles.
2	Video Layout	Changes the tile display of the videos.
3	Camera Display Order	Changes the camera display order.
4	Overlay	Displays the Vehicle ID and the time in milliseconds.
5	Maximize Restore layout	Maximizes the current layout. The current layout is maximized to full screen mode.
6	Close	Closes all of the videos streaming in the current layout tiles.

Playback Controls

The Playback Control buttons control how the video is displayed.



Item	Name	Description
1	Step Reverse	View the next frame in reverse direction.
2	Play Reverse	Plays current video in reverse mode at normal speed. Clicking the icon again, the speed is increased. The speed management is device dependent.
3	Pause/Play	Pauses the video or plays the selected video at normal speed.
4	Fast Forward	Plays current video in forward direction. Clicking the icon again, the speed is increased. The speed management is device dependent.
5	Step Forward	View the next frame in forward direction.

Manage Users

In standalone mode, Administrator users can use the User Management Toolbar to add or modify a user.

Add User

1. Click **Tools**.
2. Click **User Management**.
3. Click the green plus sign, the **Add User** icon.



The screenshot shows a 'User Add' dialog box with the following fields and options:

- User Name: [] *
- First Name: [] *
- Last Name: [] *
- Email: []
- Phone Number: []
- Password: [] Generate
- Show Password
- Admin Active
- OK

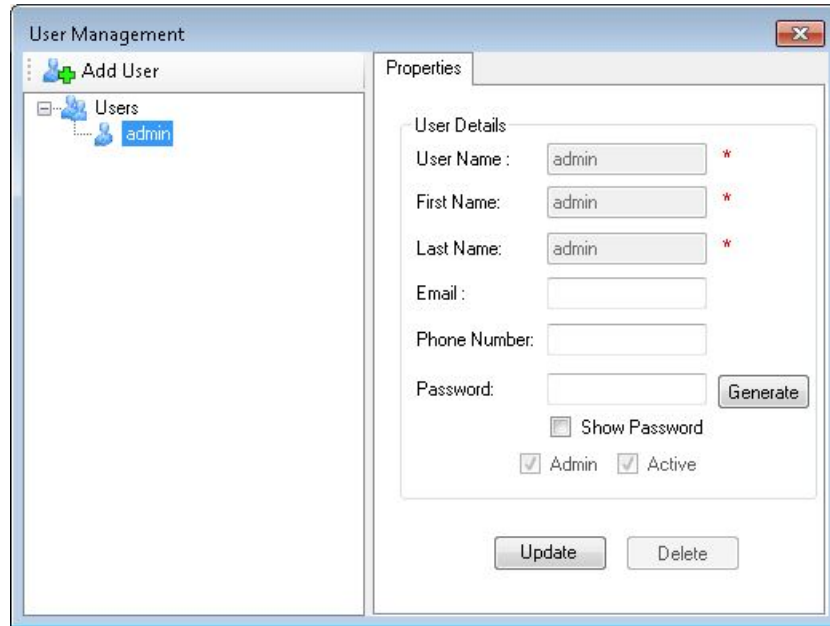
4. The Admin enters the necessary information to create a new user.

A window displays stating the user was added successfully. A system generated password is e-mailed to the email-id provided. When prompted for the first time, create a unique password.

Update User Information

The Admin user can update user information including first name, last name, email, and phone number.

1. Click the **Tools** menu.
2. Click **User Management**.
3. Click on **Admin**.
4. After updates have been made, click **Update** to save the new information.



User Permissions

The MobileView Navigator window displays based on user permissions. The vehicle selector tree populates with folders and devices from the database. Each device in the tree is highlighted according to the availability status. Devices not available display in italic font.

A normal user can perform all of the operations available in the application except managing users, task scheduling, and managing system settings.

Application Permissions: Admin User

An Administrator can set the following permissions:

- Manage vehicle list
- Task scheduling
- Manage users
- Password management
- Local file playback
- Settings
- Burn video file to media
- Services

- Erase disk

Application Permissions: Normal User

A normal user can set the following permissions:

- Manage vehicle list
- Password management
- Local file playback
- Burn video file to media

Manage Password

Each user has a unique password that is set up when the user is created. Only the Administrator can change the password, challenge question, and answer.

1. Click the **Password Management** icon.
2. Change the user password by entering the old password followed by the new password.
3. Change the security question and answer.

Viewing Connected Work Stations

All connected workstations can be viewed by clicking the plus sign in front of the Work Stations option. Video files can be opened and closed (released) through the Work Station option. Click the **Work Station** name and right click to **Open File** or **Release Files**.

Using Video

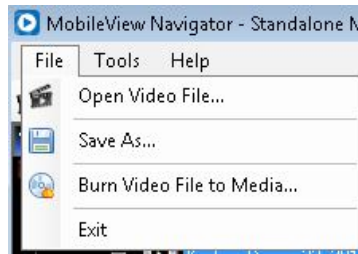
Open a Video File

The Video Display panel allows both live and recorded video from any video source in the system. It contains live or previously recorded video launched from the search, vehicle selector, or disk analysis panels.

Open a Local Video File

To open previously saved video files:

1. Click the **File** menu and click **Open Video File**.
2. Use the Open Video File menu to select a video file from local disk or network.

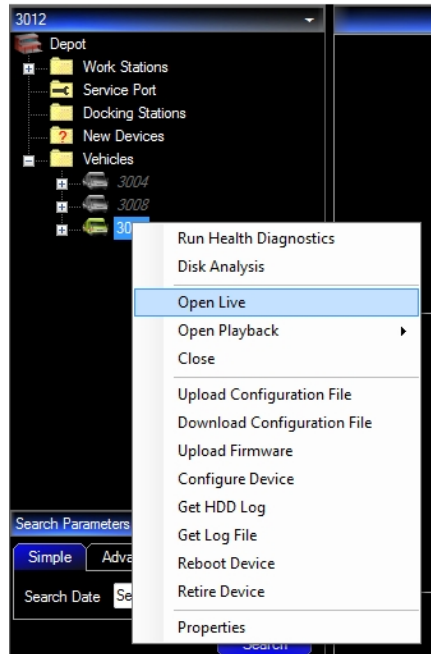


3. Select the video file name and click **Open**. MobileView Navigator plays the video file.

Note: An alternate way to open a video files is to click the movie icon on the toolbar.

Open Live Video

1. Click the **Vehicle** folder.
2. Select the desired device and right click to open the menu.
3. Click **Open Live** to view live videos of a device in reachable state.



Open a Playback Video

1. Click the Vehicle folder.
2. Select the desired device and right click to open the menu.
3. Click **Open Playback** to view playback videos on a device.

4. Click **Playback** to view the last 15 Minutes or 30 Minutes.

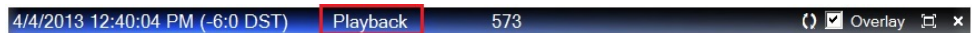
View Video Information

Displays the header and footer data for the selected video tile. The following information is displayed on the header and footer of the video tile:

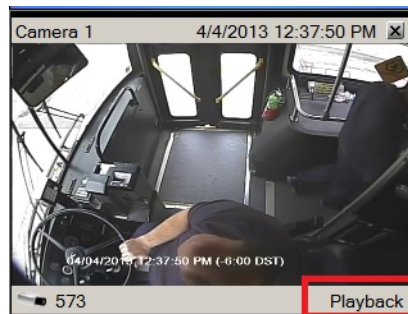
- Camera title
- Video play time
- Device name
- Video stream state
- Close video tile

Identify Live or Playback Mode

When a video is open, the top of the viewer caption bar displays the current activity Live or Playback.

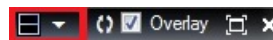


The corner of each video displays whether the video is Live or Playback.



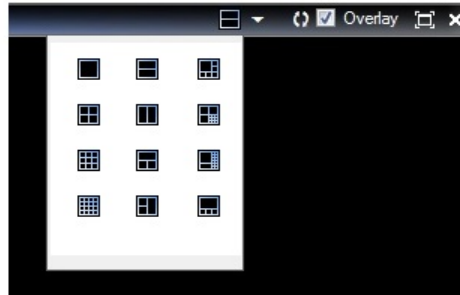
View Video Tiles

There are several tile layouts to choose from when arranging the videos. Change the layout by clicking the layout icon.



Use Layout Selector to change the video tile layout. Layout selector shows all available layouts. MobileView Navigator displays only those cameras associated with the device. All other cameras close.

Standard tile layouts include 1×1, 2×2, 3×3, 4×4, and 5×5. Custom tile layout is also supported with 1 large tile and 7 smaller surrounding tiles. Double-clicking in any single tile brings video to a full screen. Double-clicking the tile again restores the video to the previous tile layout size.



Opening and closing of an individual camera stream is supported in the application. When a new layout is selected, all existing video streams and controls change to the new layout. Layout is supported for live, playback and local file playback. Changing a layout from a larger number of views to a smaller results in a confirmation asking to close cameras. Once the cameras are closed, they do not display in the window.

Adjust Camera Order

Select the order cameras will display in the window.

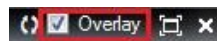
1. Click the **Camera Order** icon.



2. Adjust the order of cameras by selecting a camera and using the up and down arrows to move its position in the display window.
3. Click **OK**.

Video Overlay

Click **Overlay** on the Video Layout Manager Toolbar to enable or disable overlay. Overlay displays the Vehicle ID and the time in milliseconds. Overlay is turned on when the check mark displays.



Maximize Video

1. Click the **Maximize/Restore** icon. The window expands and the left side menu no longer displays.
2. Place your cursor in the top right section of the window until the Video Manager toolbar displays.
3. Click the **Maximize/Restore** icon again to restore the window to the original view to include the left side menu.



Close All Video Tiles

Click the X icon to close all videos.



Find the Time Zone

The top of the viewer caption bar displays the MobileView Navigator time zone.



Maximize Video

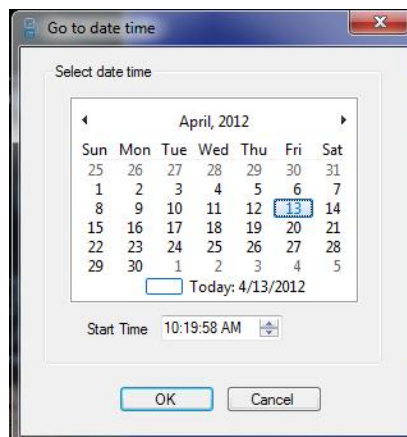
When viewing a video, double click on the individual video tile to zoom in. The video fills all tiles. To zoom out, double click again, the video resumes the regular viewing size.

Search Video

Searching for video can be performed in a variety of ways.

Search by Date and Time (Live mode only)

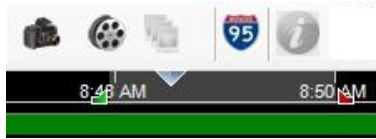
1. Click **Go To** from the timeline.
2. Select the desired **Date/Time**.
3. Click **OK** to start the search.



Select Video Using Timeline Bar

Using the mouse, hover over the Timeline Bar. When the range selection indicators appear, move (slide) the selection start time indicator and the selection end time indicator to select the time range.

Double-clicking anywhere on the timeline automatically plays back the selected video at the specific date and time. Use the current live or playback cursor (a blue seek triangle icon) to seek and play the video anywhere along the timeline.



1. Click to magnify the time frame. This is located on the far left of the timeline.
2. Click to reduce the time frame.

Docking Stations and Caddies

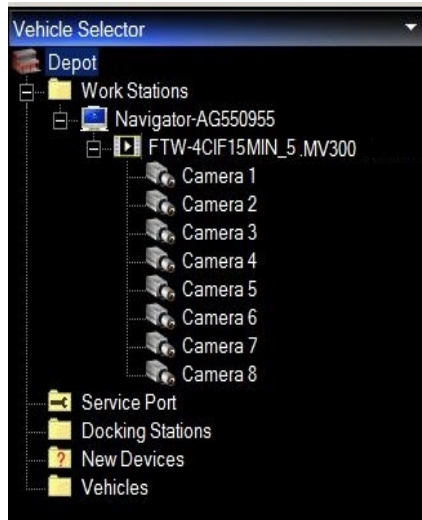
MobileView Navigator automatically searches for hard drives added to the computer or network and updates the vehicle selector by adding newly found caddies or compatible Docking Stations. If a caddy is removed from the computer after it is discovered, the caddy disappears from the Docking Stations list.

Once a caddy is added to the tree, the following options can be performed:

- Play video from disk beginning.
- **Goto** option on timeline bar displays video from any date and time.
- Use timeline controls to perform video operations including fast forward, fast reverse, frame next and previous frame.
- Click **Map** in the toolbar to view the vehicle moving on the map.

The disk analysis for selected cameras are displayed on the timeline bar.

Access log files on the caddy by clicking **Get HDD Log** from the Caddy menu. Select a timeline within the range of videos recorded. Choose within From and To times of the recorded video.

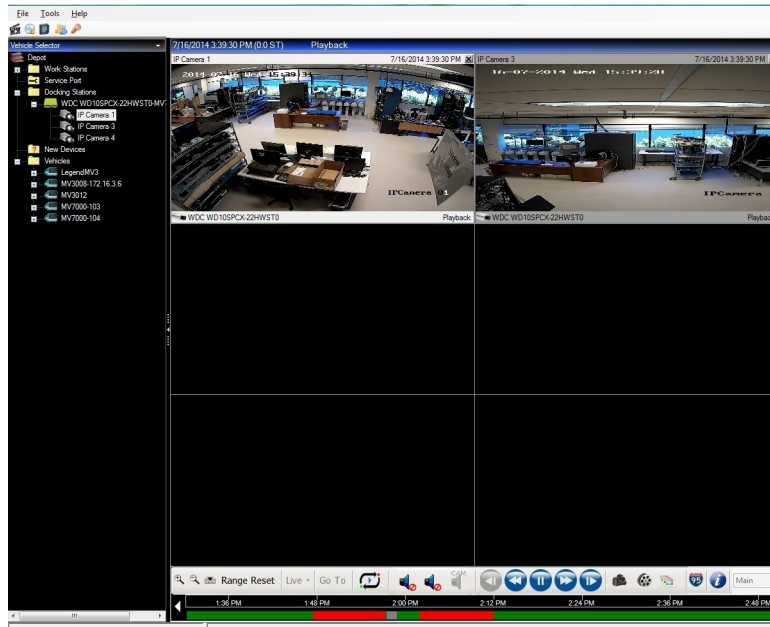


Display Events

When a vehicle is configured to record or mark events, an indicator displays on the timeline for events occurred. There are several reasons an event would occur:

- Door open
- Turn signal
- Headlights
- Wheelchair ramp
- Emergency tag
- Silent alarm

Event types are represented by different colors. Events display on the timeline in red to indicate an event has occurred. Green lines indicate video was recorded.



Definition of events

Color	Event Type
Gray	Untagged
Blue	Video Loss
Red	Alarm
Green	Normal Video
Yellow	Other event

Events are also displayed in the Disk Analysis.

Device Menu

To open the Device menu:

1. In the **Vehicles** folder, locate the desired device.
2. Click the device.
3. Right click to open the **Device** menu.

Use the Device menu to perform any of the following options:

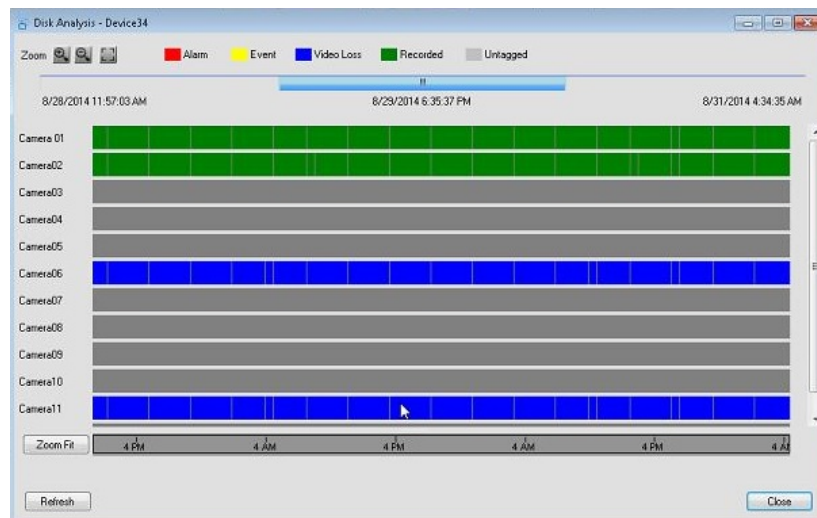
- Run health diagnostics
- Disk analysis
- Search

- Open live
- Open playback
- Close
- Upload configuration file
- Download configuration file
- Upload firmware
- Configure device
- Get Log File
- Reboot service
- Delete
- Properties

Disk Analysis

Disk Analysis is retrieved and displays the recorded data in graphic format. The window displays the video data available on the disk. It displays the video type (Alarm, Video Loss, and No Video) for each camera using color coding. Refresh to retrieve the latest disk analysis. Some disk analysis may take time to analyze the data.

1. Click the **Vehicle** folder.
2. Select the desired device and right click to open the menu.
3. Click **Disk Analysis**.
4. The device cameras display with a graphic display of each camera video. Explanation of the color codes are located at the top of the window.
5. Zoom in on specific times to view a more detailed display of the camera status at a more specific time. Zoom by using the Zoom icons at the top left of the window.
6. By double clicking on a specific time area, the recorded video displays.



Maps

MobileView Navigator can visually track a vehicle on a map. The location and the speed of the vehicle displays on the GPS map. The position of the vehicle is identified using coordinates within the video files.

Note: Vehicle tracking on maps is only available on Live/Playback video in normal speed.

Track a Vehicle on a Map

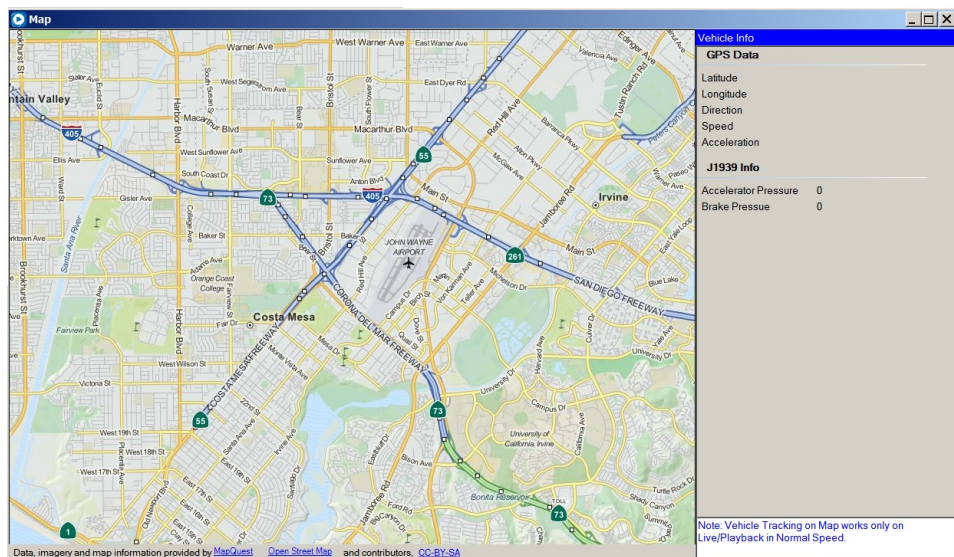
When video is playing live or in playback mode, click on a map to control tracking of the vehicle on the map. The map control window opens with the map displayed at zoom level eight on the given route. There are 16 zoom levels.

The Vehicle tracks using a bus icon and video plays. The icon moves along the route with a tracking line where the vehicle has traveled. Panning can be performed on a map in all directions available in the selected zoom level.

1. Click on a video.
2. Click the highway sign on the toolbar to open the map.



The map for the selected vehicle displays.



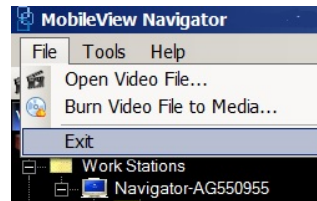
3. Locate the vehicle using the bus icon.

Help

If assistance is needed, click the Help menu and click **Help Topic** to receive help information.

Exit

To exit from MobileView Navigator, click **File** and click **Exit**.



Vehicles

After logging into the MobileView Navigator software, all connected vehicle names display. In standalone mode, MobileView Navigator checks the folder and the device list in the local database and uses the list to load vehicle names. All of the folders and respective devices in folders are loaded into the Vehicle Selector tree. The device state is represented on the tree. (reachable/not reachable) Unreachable device names display in italic font and reachable device names display in normal font. In client mode, the local database will not be displayed and any added vehicles to this list will not display.

The Vehicle Selector panel features double-click, or drag and drop capability to view cameras or devices. Right-clicking on any object in the Vehicle Selector panel opens a menu of options that can be performed on the vehicle. The options include health diagnostics, device configuration, disk analysis, properties, search, firmware uploads, and more. This panel is permission based and not all options are available for all users.

If a caddy is discovered, the name is added to the Docking Stations folder. If any new devices are discovered they are added in New Vehicles.

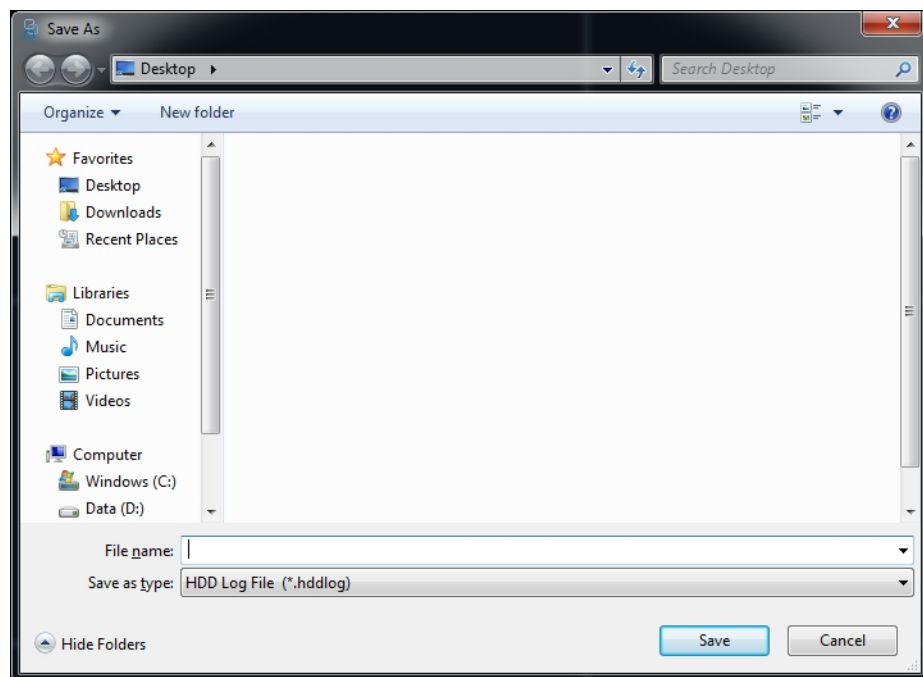


Upload Firmware

1. Click **Upload Firmware** from the Device menu. A window displays to browse the firmware for the device (.bin).
2. Select the appropriate firmware and upload to the device.

Get Hard Drive Log

The HDD log is the log file for the hard drive. Click **Get HDD Log** from the by right clicking on a device, save the log file in.HDDlog format.



Get Log File

Click **Get Log File** from right clicking on a device to retrieve the system log file. Save the log file in system log format.

Reboot Device

Click **Reboot Device** from right clicking on a device. The device reboots.

Provisioning

Provisioning software is supported on the following recorder models:

- MobileView 3000 Series Analog Video Recorders
- MobileView 7000 Series Network Video Recorders

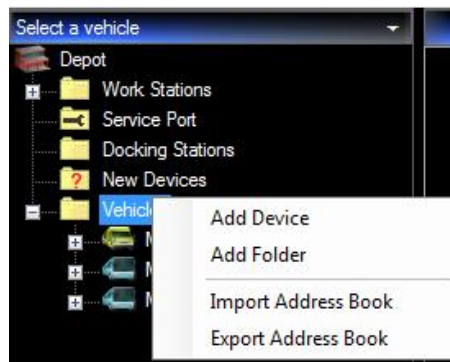
Use the provisioning tool to manage large systems from MobileView Navigator. The provisioning tool opens communication with the device:

- Connect to a DVR or NVR.
- Assign the device name.
- Configure the wireless network.
- Upload firmware.

Import/Export Address Book

1. Click the **Tools** menu.
2. Click **Address Book**.
3. In the Address Book window, select either **Import List** or **Export List** of an address book.
4. Select a .csv or WaveReader file for import. MobileView Navigator loads the contents of the address book file, parses the contents, and populates the Vehicle Selector tree in a folder named with the current date and time.

All imported devices or folders are added to the application database.



When exporting a local address book file, select where the exported file will be saved. All of the devices in the Vehicle Selector tree export to HDD Caddy. Information from the tree is not exported.

The exported files are in .csv format. The name of the file includes the mobile software version when the file has been exported. The exported file includes the device and camera information.

Note: The address book does not contain any hard drive caddy information. The hard drives are not configured in the vehicle selector and are automatically populated when a caddy device is discovered.

MobileView Navigator automatically attempts to connect reachable devices and updates the status in Vehicle Selector.

When a new device is discovered, MobileView Navigator adds the device to the New Vehicles folder. The following choices are available when a new device is discovered:

- Ignore the device and not add
- Drag and drop the device to the vehicles folder.
- Monitor and perform options available for the device.

The following states display for vehicles and new devices depending on their accessibility.

- Device not reachable (grayed out and italicized)
- Connected/Reachable (normal font)

Cameras associated with the device are populated when moving the device from the New Device folder to the Vehicles folder. After populating, live and playback video for the device can be accessed.

New Devices

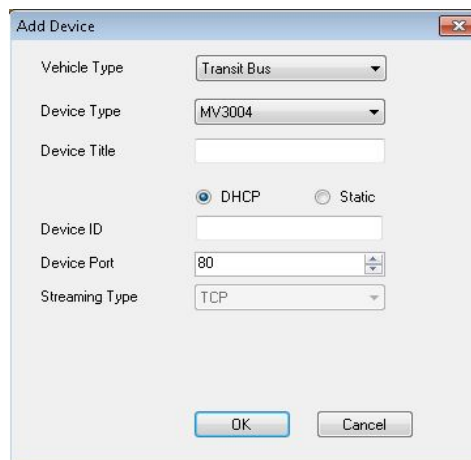
Auto Discovery

In standalone mode, MobileView Navigator automatically communicates with devices that are on the same network. New and updated vehicles are identified and added automatically to the vehicle list and display in the New Devices list automatically.

Manually Add Vehicle

When a vehicle is not automatically added, perform a manual add.

1. Right click the **Vehicle folder** and click **Add Device**. The Add Device window opens.
2. Enter the Device Title and the Device ID.



3. Click **OK**.

Note: The device is added in a disconnected state. Once the device is online, the device tree updates to display the device in the vehicle list.

4. Drag any desired devices to the Vehicles folder. To select multiple vehicles, use the Ctrl key on the keyboard while selecting multiple vehicles.

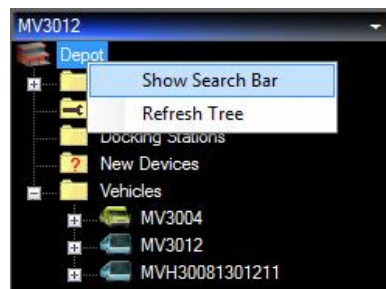
Vehicle Management

1. Open **Vehicle Management** and double-click on a row.
2. Modify the details of the device.
3. Click the **Add Vehicle** toolbar on the Manage Vehicle List form. The Add new device window opens. The newly added device is updated in the vehicle selector list.
4. Select a device row in the Manage Vehicle List.
5. Click **Remove Vehicle** on the toolbar. The selected device in the grid deletes from the list.
6. Export the vehicle list to .csv format file by clicking **Export List** on the toolbar.
7. Import vehicles from address book (exported) files. Click **Import List** on the toolbar.

An open file window appears, choose a .csv file (Mobile/Wave Reader) file. When a valid file is selected, the vehicles list is imported displaying in the vehicle management grid and is updated in the vehicle selector.

Search for Device in Vehicle Selector

1. Select **Depot** and right-click.
2. Click **Search**. This opens a search text box.
3. Enter the name of the **Device Folder** and click **Search**.



The scroll bar automatically scrolls to the item selected when the Vehicle list is displayed. The next device or folder meeting the search criteria can be reached by clicking search again. If the selection reaches the end of vehicle selector, all search results highlight.

Service Port When Device Not Added

When a device has not yet been added, the Service Port Option will display on available MobileView systems when directly connected to the front Ethernet port on the device.

1. Select the system type to add a device.
 - MVIII
 - MV 3004
 - MV 3008
 - MV 3012

- MV 7001
2. Enter the IP Address and click **OK**.

Service Port When Device Added

Once a device is added, tasks can be run from the Service Port option.

Right-click **Service Port** to perform one of the following tasks.

- Run Health Diagnostics
- Disk Analysis
- Open Live
- Open Playback
- Close
- Upload Configuration File
- Download Configuration File
- Upload Firmware
- Configure Device
- Get HDD Log
- Reboot Device
- Properties

Details on how to perform any of the above tasks are located within this guide.

Device Tasks

Devices are digital video recorders.

Standalone Mode Settings

1. Open the **Tools** menu.
2. Click **Settings**.
3. Click either the **System** tab or the **Discovery** tab.

Use the Discovery tab to identify the default IP address and port number.

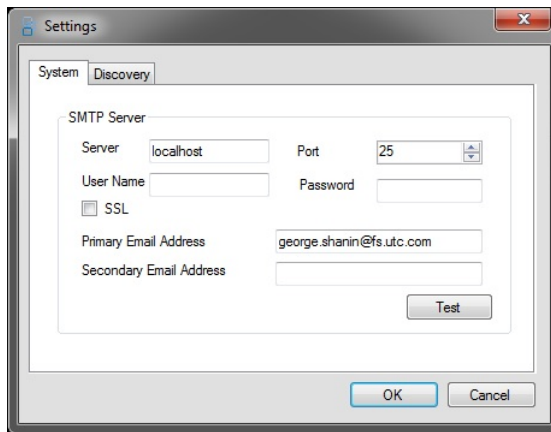
SMTP

The SMTP settings are used to configure the server to enable email notifications.

The following SMTP Server (SMTP Server details) display on the System tab:

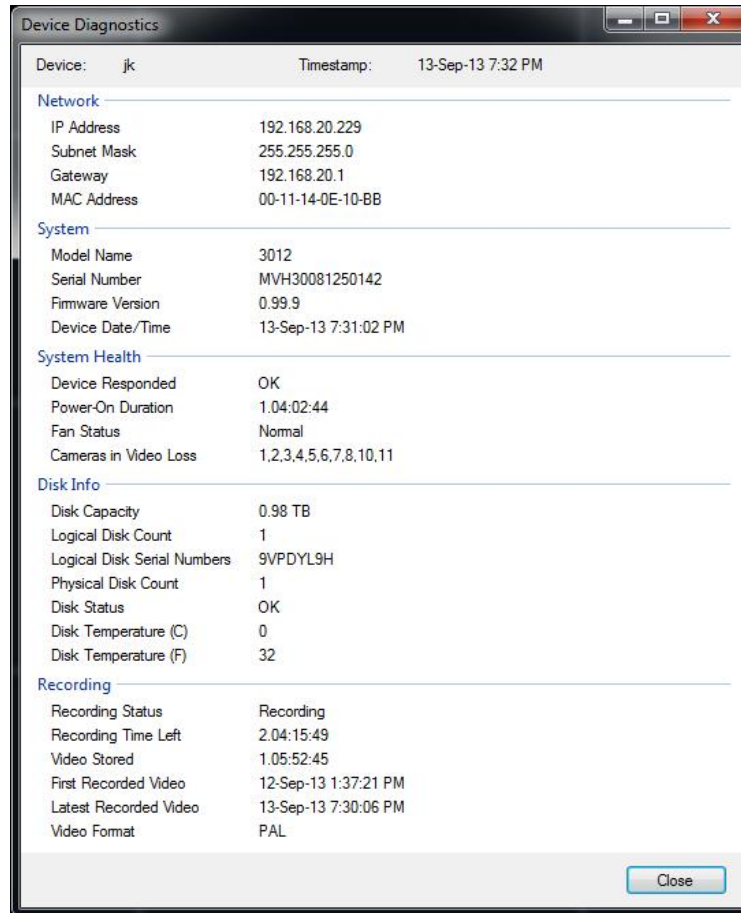
- Server name
- Port
- User name
- Password
- SSL
- Primary email address
- Secondary email address

- Test (to test the connection)



Device Diagnostics

1. Select a device.
2. Open the Device Menu.
3. Click **Run Health Diagnostics**.



Device Properties

Click **Properties** from the Device menu. The device properties open in a tab format and display the device properties. Editing depot properties allow changes to be made to depot naming, connection information, and video repository information.

Edit Depot Properties

1. On the Depots menu, select the depot you wish to configure and select **Edit** from the drop-down list.
2. The Edit depot screen appears. Configure the depot.
3. Click **Save**.

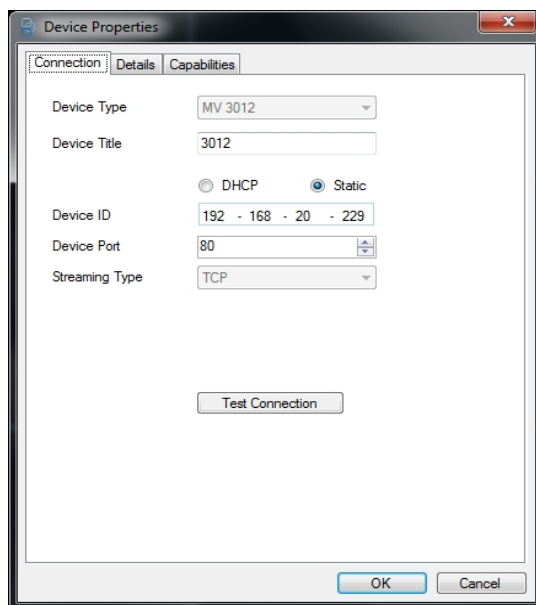
Device Connection

MobileView Navigator allows only one device to be connected and accessed at a time. Choose any device in the tree. The application switches to the currently selected device.

The selected device title is displayed in the Vehicle Selector caption bar. Vehicles in the New vehicles folder are not accessible until they are moved to the Vehicles folder.

Select a Device. If the connection is successful, these updates are made to the main window:

- The connected device and all available cameras are populated and expanded.
- Timeline and video controls are in a disabled state. They are enabled only while viewing video.
- MobileView Navigator allows only one device or caddy to be connected at a time. When a new device is connected, the currently streamed videos close.
- Access any feature available on the device.
- The currently selected device title is displayed in the Vehicle Selector section.



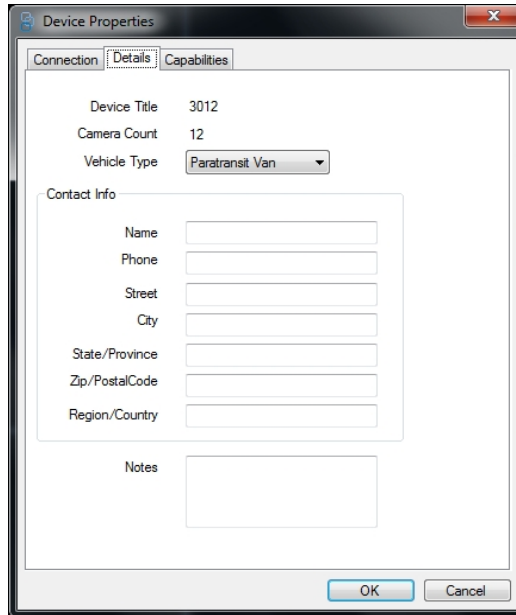
Out of Network Device

When a device is out of network while performing operations, a status message displays indicating the device is out of network.

Vehicle Selector updates to indicate the device is not in reachable status. If Live or Playback videos are playing for a device, all of the tiles close and the layout is brought to the initial view. All objects related to the device state clear.

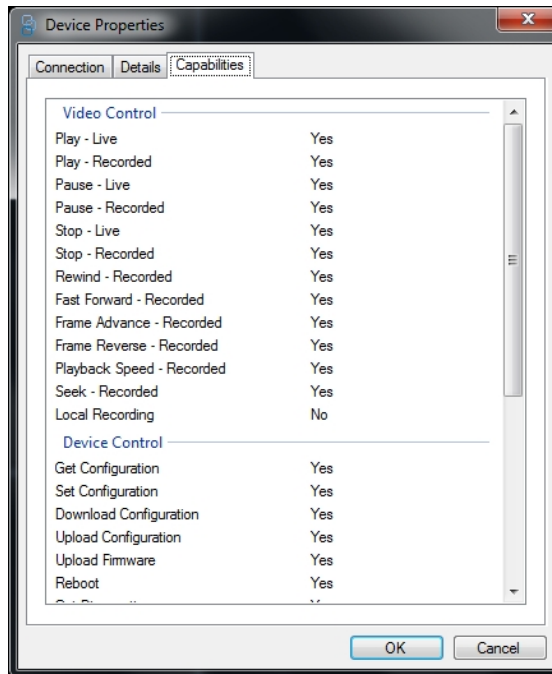
Details

Device details are displayed in the Details tab.



Capabilities

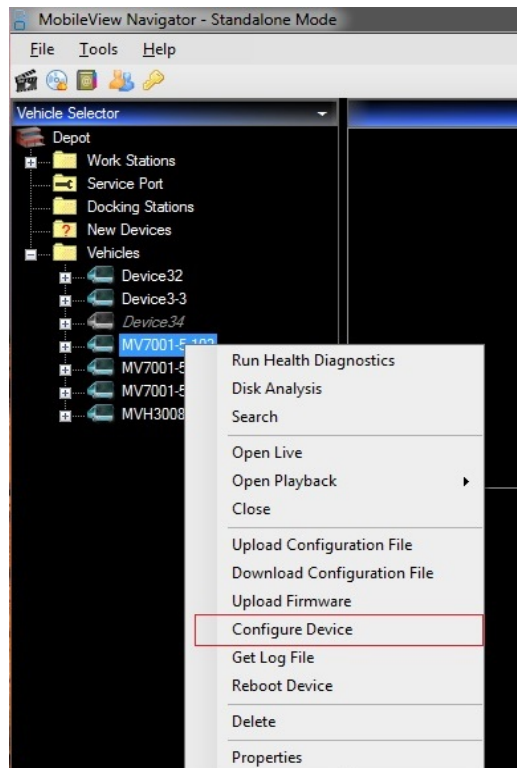
Device capabilities are displayed in the Capabilities tab.



Device Configuration

MobileView Navigator remotely configures networked devices and manages linked and saved configurations. Device configurations are supported for one, multiple, all or none of the selected devices. Use this option to used to configure e-mail notification rules for when a bulk device configuration or firmware upgrade is either completed or failed.

1. Open **Vehicle Selector**.
2. Right click on the device.
3. Click **Configure Device**.
4. Edit or delete configuration information in the window.



Devices can be remotely upgraded on networked devices. The device status typically displays offline until it is assigned a configuration.

Download Configuration

Use Download Configuration to download the device's configuration file to save or apply to another device.

1. Click **Download Configuration** from the Device Menu.
2. Select the Configuration file in ".cfg." file format.

Upload Configuration File

Use Upload Configuration to upload a saved configuration file.

1. Click **Upload Configuration** from the Device Menu.

2. Select the Configuration file in ".cfg." file format.
3. Click **Upload**.

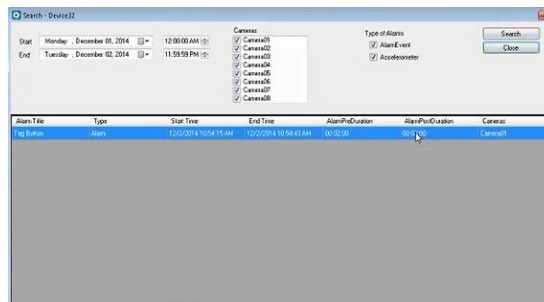
Configuration Profile

The configuration profile contains all necessary data for the device configuration. Any information stored in the profile can be edited or deleted. Use the profile to link devices to profiles to manage devices easier.

Alarms

Alarms are related to events that triggered on a device. To search for alarms on a device:

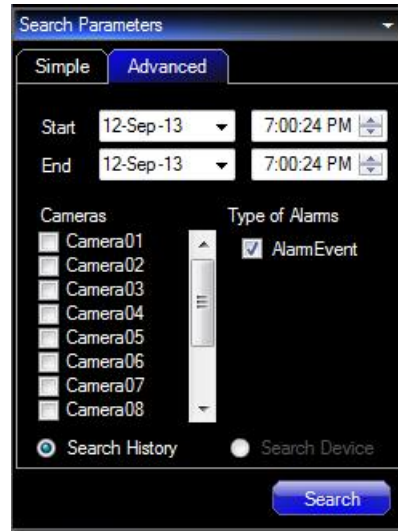
1. Right click on the desired device.
2. Click **Search**.
3. Enter the credentials to search for alarms. and click **Search**.
4. Found alarms and details display in the window.



5. Click on the listed alarm and click **Play Video**. The video alarm displays.

Advanced Search

Click **Advance Search** from the **Advanced** tab. Device cameras are populated and display in the check box list. Alarm types with check boxes are dynamically displayed by capabilities of the currently selected device.



The following search filters for alarms are supported.

- Alarm event
 - Start time
 - End time
 - Cameras
1. Perform a search from the Search History or Search Device.
 2. After selecting the filters, click **Search**.
 3. The results display in a grid below the search parameters area and separately in the Search result.
 4. Click the right corner of search Results panel and click **Show Details**. The clear option clears the results found from search.

Search Results

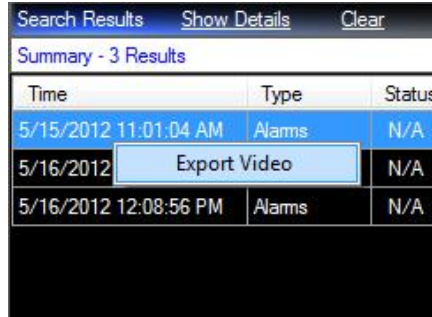
In the Time column select a result to view video. The video displays in a panel starting from the displayed time. If playback video is currently playing, all of the cameras change to the new time. If the video is not playing, MobileView Navigator opens streams for all cameras at the time of the alarm.

Search Results Show Details Clear		
Summary - 2 Results		
Time	Type	Status
4/24/2012 3:58:19 PM	Alarms	D
4/24/2012 3:58:20 PM	Alarms	D

Search completed

1. Export video from the search results by right clicking any of the listed results and click **Export Video**.

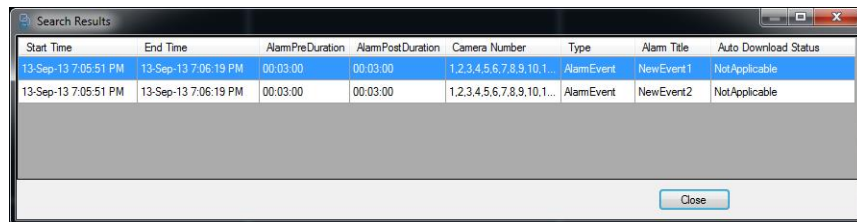
2. If auto download is enabled for the device, click in the Start Time column to download a clip (local file playback).
3. Click **Show Details**, a separate window displays details.



Search Results Show Details Clear

Summary - 3 Results

Time	Type	Status
5/15/2012 11:01:04 AM	Alarms	N/A
5/16/2012	Export Video	N/A
5/16/2012 12:08:56 PM	Alarms	N/A



Search Results

Start Time	End Time	AlarmPreDuration	AlarmPostDuration	Camera Number	Type	Alarm Title	Auto Download Status
13-Sep-13 7:05:51 PM	13-Sep-13 7:06:19 PM	00:03:00	00:03:00	1,2,3,4,5,6,7,8,9,10,1...	AlarmEvent	NewEvent1	NotApplicable
13-Sep-13 7:05:51 PM	13-Sep-13 7:06:19 PM	00:03:00	00:03:00	1,2,3,4,5,6,7,8,9,10,1...	AlarmEvent	NewEvent2	NotApplicable

Close

Synchronous Download

MobileView Navigator can download multiple video cameras containing a single file. The file can be copied using a single filename and saved.

Video Stream

Video streaming is available in two download choices. Use primary or alternate video streams with downloads for events or evidence. Primary downloads are of higher quality but are larger in size while alternate stream is of low quality but is smaller in size.

The video download facility is available only in playback mode. The facility chooses either Primary or Alternate.

Video download facility is disabled when live streaming video.

Export Video

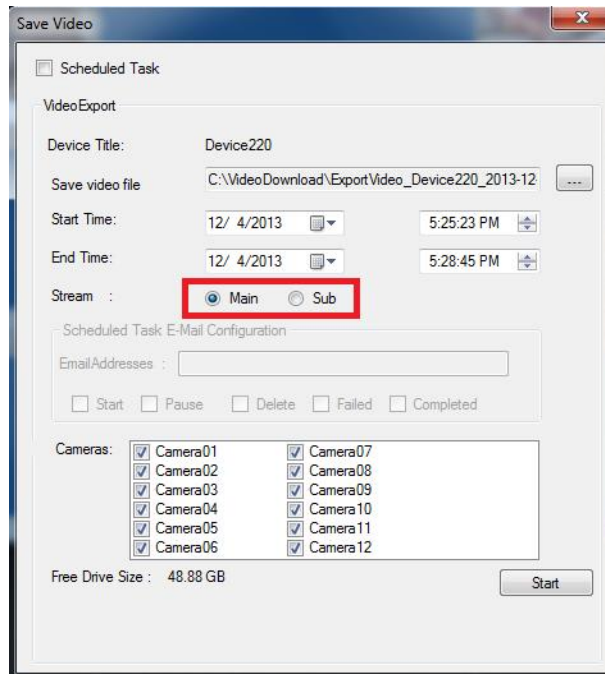
To download video, playback video in last 15 minutes, 30 minutes, or 1 hour, select the duration of the video to export.

1. Click **Video Export** to save the video file.



2. Primary stream is the default.
3. To change the stream, click **Alternate Stream**.

A window displays requiring a check of disk space. Schedule the task to a scheduler service. If space is not available in the video repository, a warning message displays.



4. Select the appropriate option and click **Start**.

Open Video Clips

1. Click **File**.
2. Click **Open Video Clip** or select the video clip icon.
3. Select the desired video clip and click **Open**.
4. Confirm the opening of the video.

Save a Video Clip from Downloaded Video

A small selection of a video can be saved as a video clip.

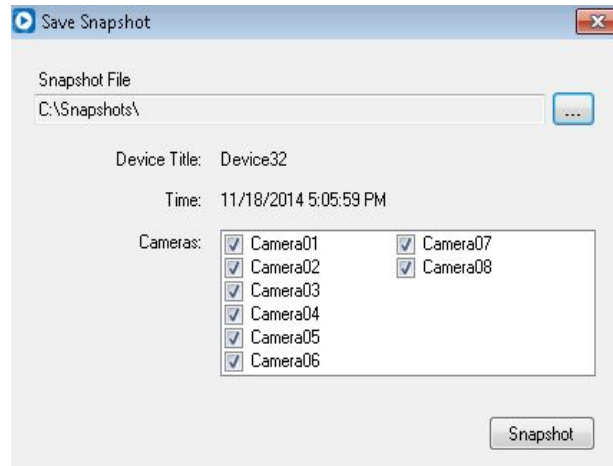
1. While the video displays, right click to open the menu.
2. Click **Save Video**.
3. Identify a name for the saved video. Browse to the directory where the file should save.
4. Identify the begin and end time.
5. Click **Start**. The video file is saved.

Export Snapshot

Use Snapshot to save the image of a single video tile of a playing video stream.

1. Click **Snapshot** on the toolbar. The snapshot option is depicted by the camera icon. A window containing a list of all the cameras displays.

2. Select the cameras containing video to be exported and click **OK**. The destination folder for the Snapshot files is written to the System Settings Snapshot folder.
3. If another destination folder is desired, click **Browse** and choose a save directory.
4. Click **Snapshot**. A snapshot generates.



Note: If there is any delay in generating the snapshot, the snapshot option disables. It disables until the system completes generating the snapshot and when resumed becomes enabled. The result of generating the snapshot is a message displayed on the status bar.

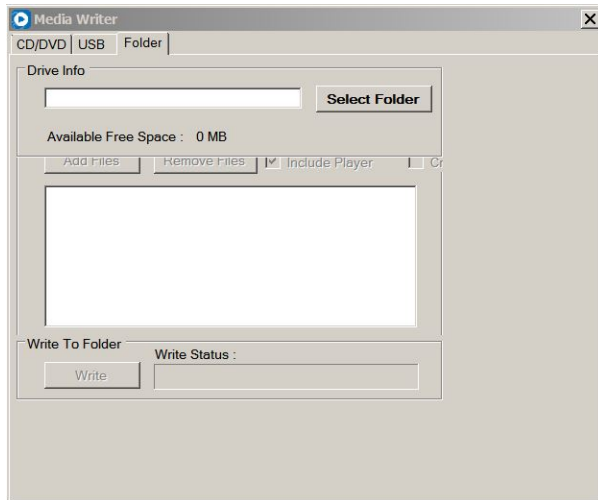
Save Video to Media

1. Click **Burn Video File to Media** to display a file window.
2. Select a file or files to be saved.

Note: By default, the time length of the saved video is 15 minutes.

3. Click **CD/DVD Writer** tab to burn files to CD/DVD.
4. Click **USB Writer** tab to write files to USB.
5. Click **Folder** to write the files to a folder or a single executable file.

6. Select the CD/DVD or USB drive from **Disc Drives/USB Drives** drop down menu.



7. Select to add files from a list box or click **Remove** to remove selected files.

Note: A mini player is also included with the file automatically. This allows any user to open and view the file without having MobileView Navigator loaded. The player saved can only play video.

8. Click **Burn** on the CD/DVD Writer tab and designate selected files to write on the CD/DVD. Use **Write in USB Writer** tab to write files to USB. Do not cancel the burn process. Do not close the Disc Burner window the middle of the writing process. If it is closed, a message displays stating “Busy with disc operation. Please wait.”
9. If needed, format the CD/DVD and erase the data on a rewritable CD/DVD by clicking **Erase**. All data on the CD/DVD is erased. Progress is shown for the operation on the Progress bar.

Save to Folder

Video evidence can be saved to a local or remote folder.

To include the player in a single file click **Create Single File**. This will create an .exe file that can be copied and used on another computer to play the video.

Save Video from Toolbar

1. Select a video to save.
2. Click the **Save Video Clip** icon displayed as the movie reel icon on the toolbar.
3. Identify a name for the saved video. Browse to the directory where the file should save.
4. Identify the begin and end time.
5. Click **Start**. The video file saves.

Create Evidence File

Evidence files are often used in court proceedings. Those who need the video are only interested in specific video. Saving video to a USB or CD/DVD creates an evidence file. A player is saved with the file for viewing the video.

Creating an Image Log

1. On the bottom toolbar, click on the **Image Log** icon.
2. The Generate Image Log displays.
3. Complete option selections and click **Start**.

The log is created for multiple images for the selected cameras during a specified time.

Administrative rights are needed to perform actions in this chapter. Contact your Network Administrator for additional help if needed.

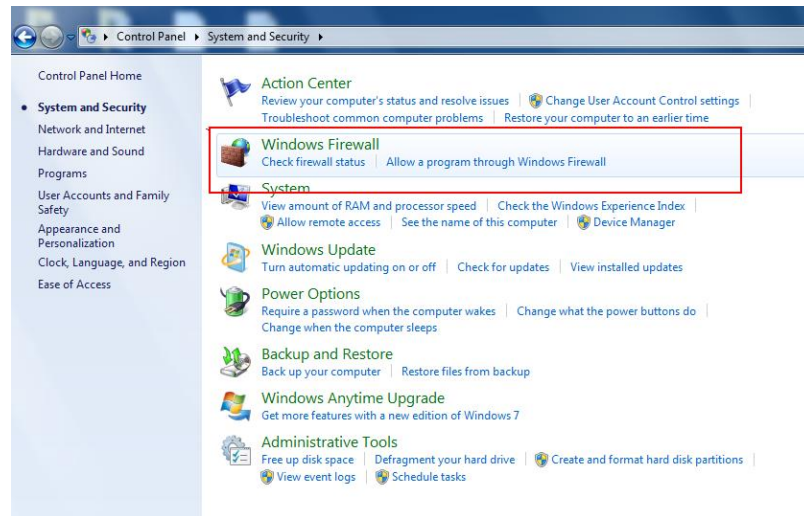
Add a Port or Program

Use the following to add a port or program when Windows Firewall is ON

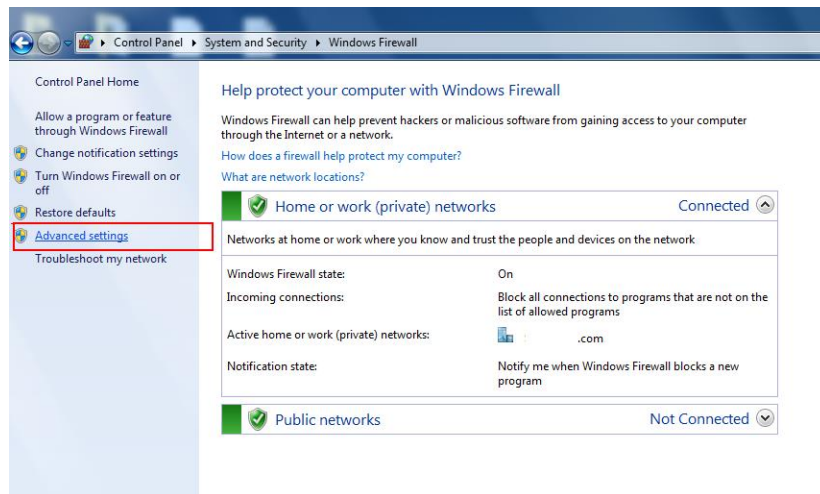
1. Click **System and Security** and click **Goto Control Panel**.



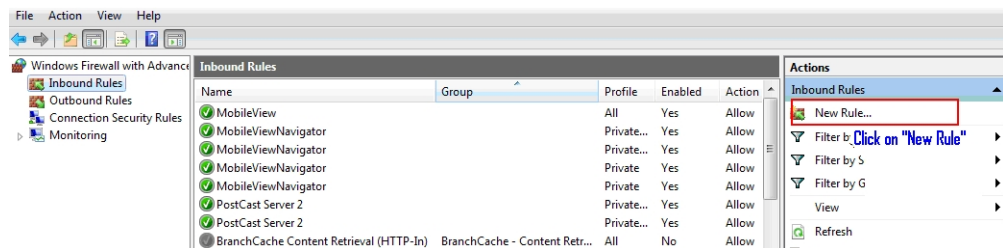
2. Click **Windows Firewall**.



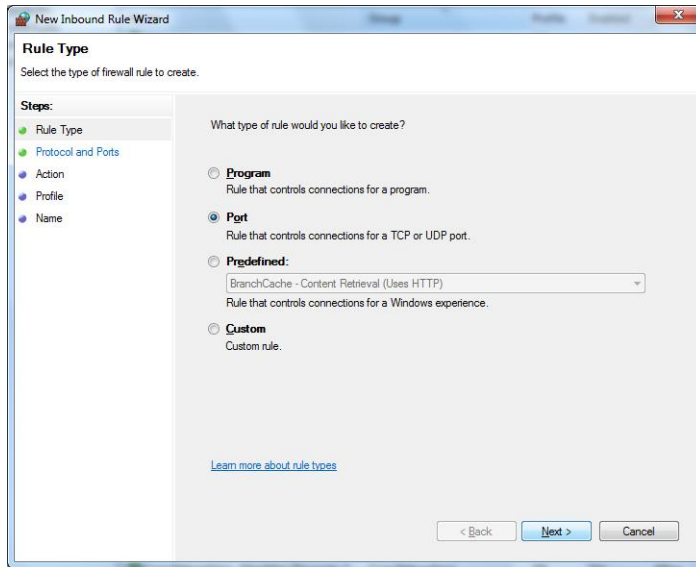
3. Click **Advanced Settings**.



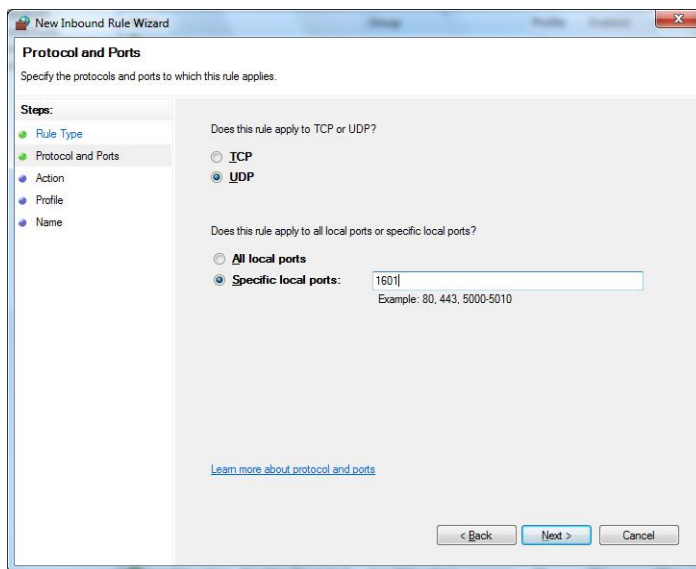
4. From Advanced Settings, click **Inbound Rules** and click on **New Rule**.



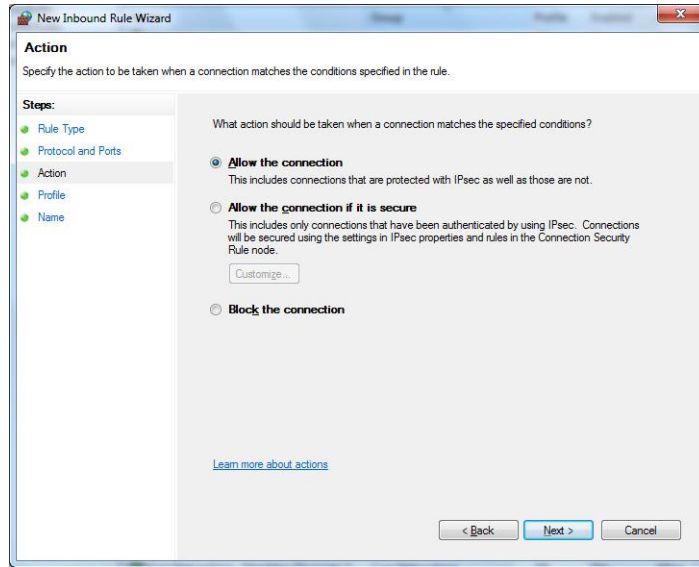
5. Select the type of firewall rule to create. A program or port can be selected. Click **Next**.



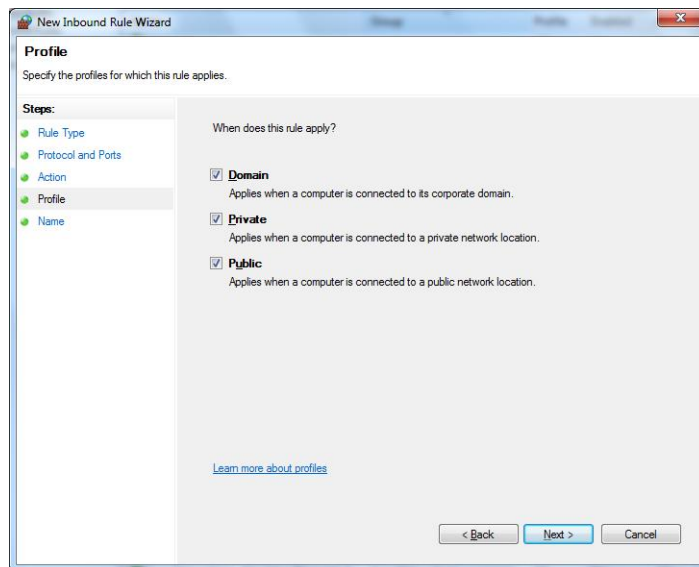
6. Specify the protocols and ports where the rules apply. (Ex: 1601 or input required port number).



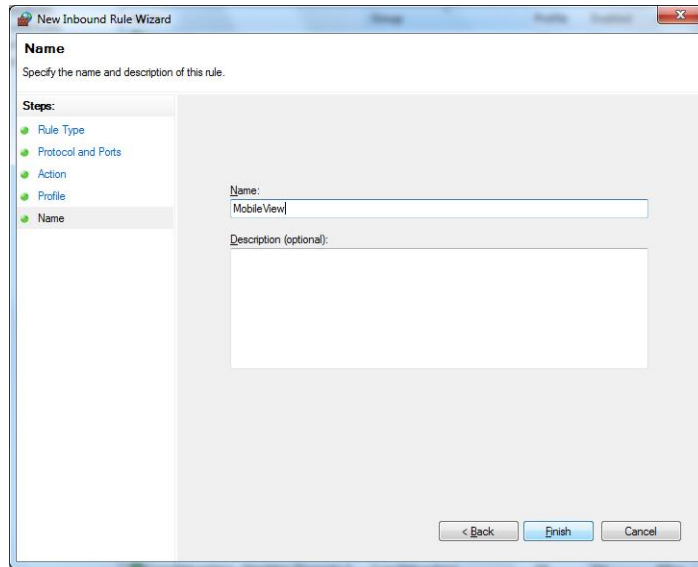
7. Click **Allow the connection.**



8. Specify the profiles where the rules apply.



9. Specify the name and description of the rule and click **Finish**.



Index

A	
Add Port	49
Add Program	49
Add User	15
Address Book	31
Advanced	
Search	40
Settings	50
Advanced Settings	50
Application Toolbar	12
Auto Discovery	18
C	
Configuration	39
File	39
Profile	40
Credentials	8
D	
Device	
Capabilities	38
Configuration	39
Connection	7, 36
Details	37
Device Connection	36
Device menu	
Open	24
Disk Analysis	9
E	
Events	23, 24, 40
Evidence File	46
Exit	27
F	
File Menu	9
Firewall	49
Firmware	30
H	
Hard Drive Log	30
HDD	22
HDD Log	30
Health Diagnostics	35
Help	27
I	
Image Log	10, 47
L	
Live Mode	19
Log	22
Log File	30
Loop Video	10
M	
Map	22
Track Vehicle	26
O	
Open Video File	17
Out of Network Device	37
P	
Password	8
Password Management	17
Permissions	16
Admin User	16

Normal User	17
Playback	8, 12
Playback Mode	19
Properties	31, 36
Provisioning	31
R	
Reboot Device	30
S	
Save Video	45
Search	
Date and Time	21
Video	21
Search Results	41
Security	49
Service Port	33, 34
Snapshot	
Export	44
Standalone Mode	7
T	
Time Zone	21
Timeline Bar	9, 10
Select Video	22
Toolbar	9, 15
U	
USB	45
User Information	16
V	
Vehicle	29
Discover	32
Folder	32
List	33
Management	33
Search	33
Selector	29
Vehicle Selector Panel	9
Video	
Layout Manager	12
Open	17
Open File	17
View Information	27
Video Clip	44
Open	44
Save	44
Video Display	9
Video Layout Manager	9