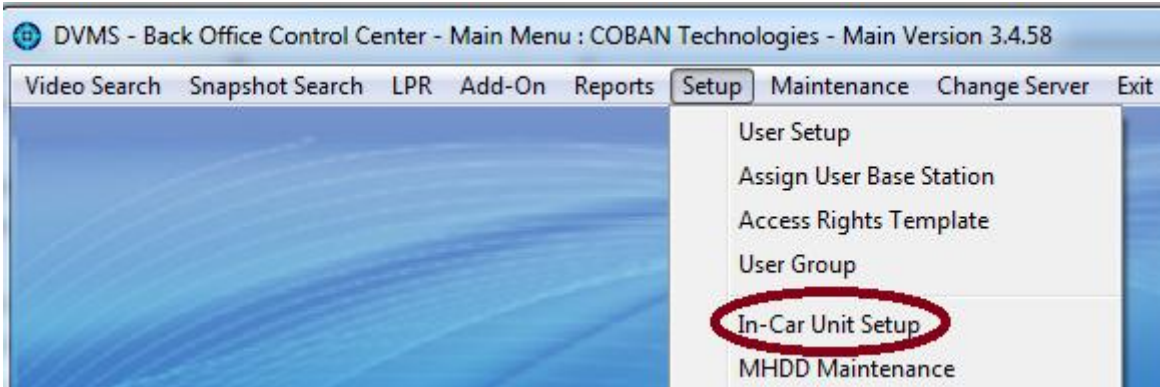


MANDATE A CASE NUMBER FOR SPECIFIC EVENT TYPES

To mandate a case number for an event type, you first need to set **the persistent event selection** as shown below;

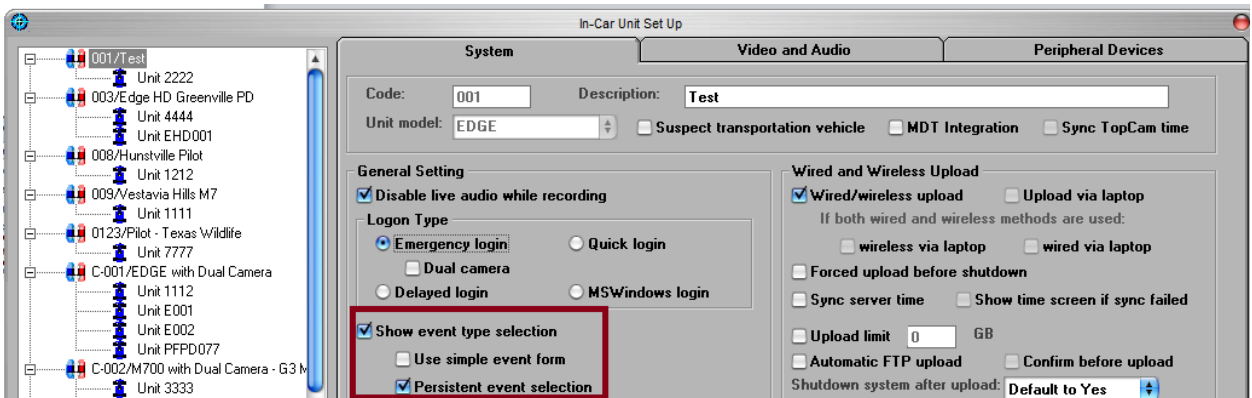
1. Go to **Setup**, select **in-car unit setup**.



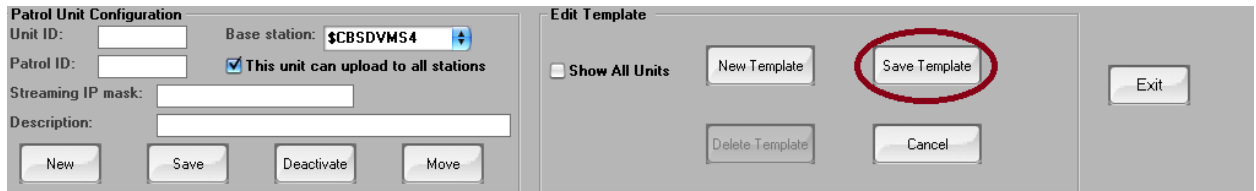
2. Select the particular Templates you want this to be effective on.



3. Under the System tab, make sure **Persistent event selection** is checked.

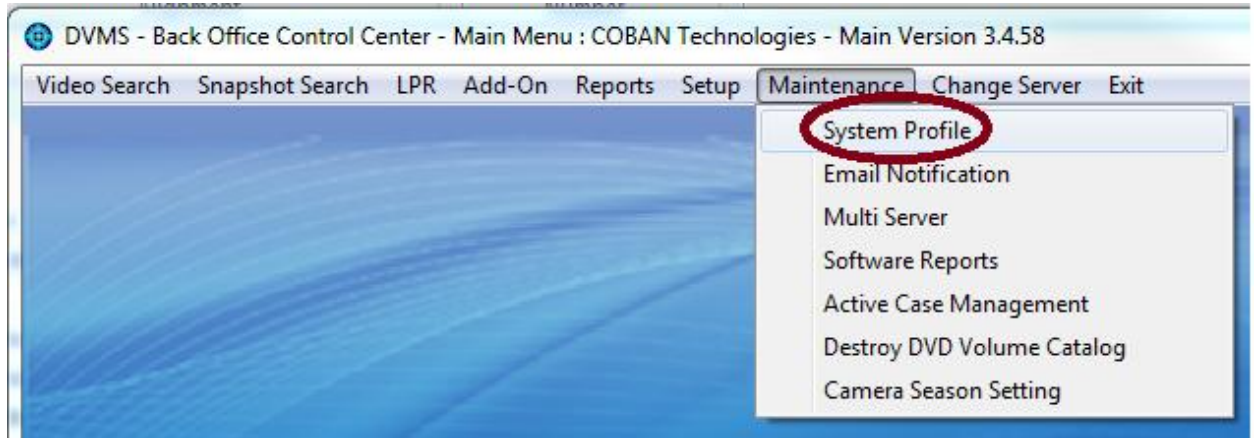


4. Click **Save Template**.

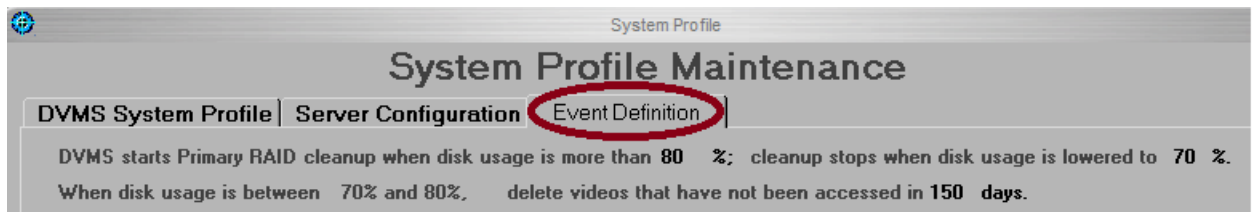


The next step is to set the **mandatory case number**.

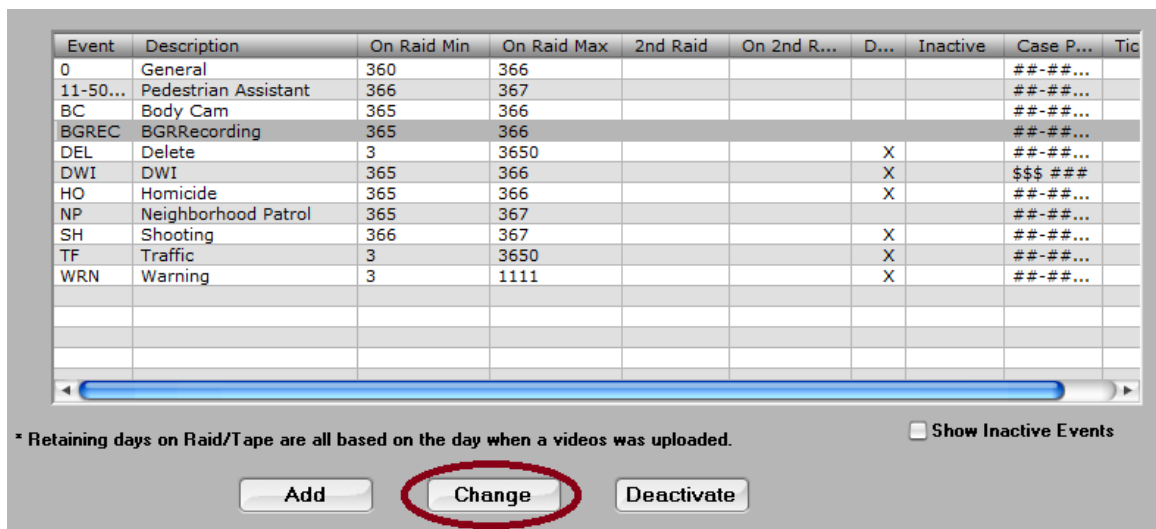
5. Go to **Maintenance**, select **System Profile**.



6. Select the **Event Definition** tab.



7. Select the **Event type** you are trying to set this up on and click change



8. Under the **Operation Settings**,
 - i. Check **Require Case No.**
 - ii. Set **Case Pattern** (Recommended).
 - iii. Click **Okay**.

Operation Settings

Multi-Server Environment

Copy videos to main server

Push videos to DR site

Priority Settings (0: highest)

Event selection list priority:

Applies To:

In-car units

Motorcycle units

Interview room systems

Jail systems

Body Cams

In-Car Data Entry Options:

Require Case No

Require Ticket No

Require Offender Info

Require Race Info

Require Gender Info

Patterns

Case pattern: Ticket pattern:

\$- Alphabet #-Number(:.space included as delimiter)

Note: Based on the above illustration, the case pattern will be e.g. 11-111111

#- denotes Numeric

\$- denotes Alphabet.

\$#-\$\$#\$#- e.g. will be A1-B1C1D1

##-#####\$- e.g will be 11-A1111A