

## Configuring the Router (continued)

3. (continued)

iii. Expand **NMEA Messaging**.

iv. Under the **Local** section:

- Change the **Sentences** value to **RMC**
- Change **Report Interval** value to **1**

The screenshot shows the configuration interface for the router. The 'NMEA Messaging' section is highlighted with a red circle. It contains two columns: 'Local' and 'Remote'. In the 'Local' column, the 'Sentences' field is set to 'RMC' and the 'Report Interval' is set to '1'. In the 'Remote' column, the 'Sentences' field is empty and the 'Report Interval' is set to '10'. Below these fields are 'Additional Options' with checkboxes for 'Emit ESN in Proprietary Sentence' and 'Group Sentences in a Single UDP Packet'. The 'GPS Sources' section at the top has 'Built-in GPS' selected. The 'Local Forwarding' section at the bottom has 'Listen Port' set to '9345' and 'Broadcast LAN' checked.

v. Scroll to the bottom of the window and click **Submit**.

## Service & Support

If your GPS kit is to be returned for service, please contact the Safe Fleet technical support team, provide the part and/or serial # of your unit, and ask for a **Return Merchandise Authorization (RMA)** number.

An **RMA #** allows the support team to better track your product when it comes in for service. Please show the RMA # on the **outside** of the package.

ANY PRODUCT SENT WITHOUT AN RMA# MAY BE REFUSED!

### Documentation and Warranty

Additional copies of this guide along with other documentation and product warranty can be found on the Safe Fleet Community website: <https://community.safefleet.net>

### Technical Support

**Phone:** 1.844.899.7366  
**Email:** [PTsupport@safefleet.net](mailto:PTsupport@safefleet.net)

This Guide describes how to connect and configure the GPS signal from a Sierra Wireless MG90 router to Safe Fleet® recorders using a rear-panel serial GPS port (2x2 Microfit)\*.

### \*DH Series Recorders

The MG90 router connects to DH series recorders through the Expansion Harness (part # 060-1059, sold separately). This does not apply to the DH4C recorder, which only supports RF GPS antenna connection.

For details, see the wiring diagram in this guide and your system documentation.

**Information is subject to change without notice.**

For the latest documentation, please visit the Safe Fleet Community at <https://community.safefleet.net>.

## Kit Contents

Check the package and contents for visible damage. If any components are damaged or missing, contact the Safe Fleet Service team and request an RMA (Return Material Authorization).

### GPS-MG90-NH-KIT

- Null modem adapter (444-1076)
- Serial adapter harness (060-1101)
- GPS extension cable (GPS4-CBL)  
20-ft./6.1m length
- Adapter cable for DH series (060-1231)  
1-ft./0.3m length

## System Documentation

Recorder and accessories guides are available from <https://community.safefleet.net> (search for your device on the **Safe Fleet Passenger Transportation Solutions** page).

For instructions on setting up the MG90 router, consult the online *AirVantage User Guide*:  
<https://source.sierrawireless.com/airvantage/mg90/>

## Installation Environment

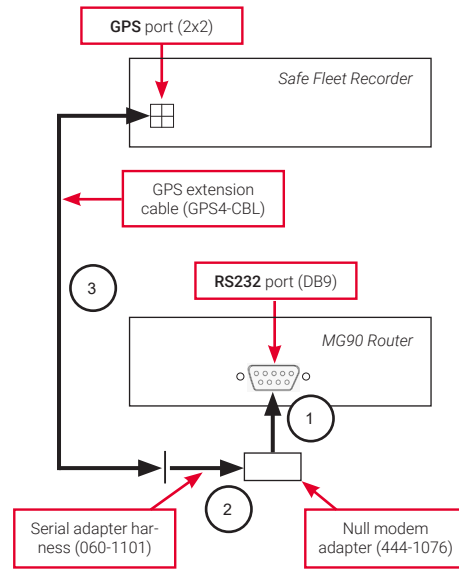
- Install electrical wiring carefully. This should be done by qualified service personnel.
- Route wiring and cables away from sharp edges that might damage insulation. Avoid sharp bends in cables.



2002/96/EC (WEEE directive): This product cannot be disposed of as unsorted municipal waste in the European Union. For proper recycling, return the product to your local supplier upon the purchase of equivalent new equipment, or dispose of it at designated collection points, for more information, see [www.recyclethis.info](http://www.recyclethis.info).  
2006/66/EC (battery directive): This product does not contain batteries.

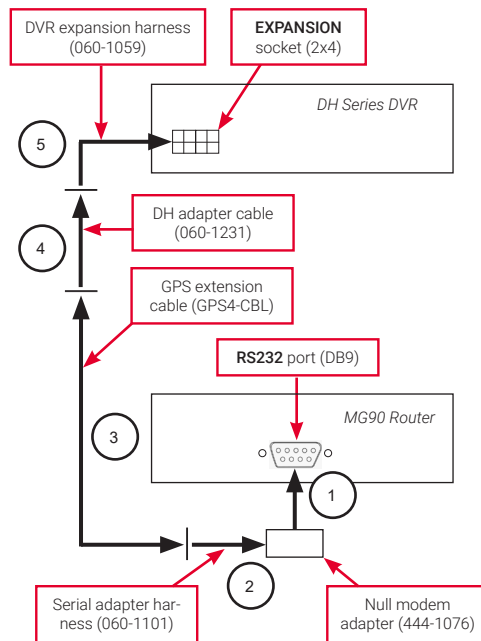
## Wiring the GPS (for recorders with serial GPS port)

1. Plug the DB9 female end of the null modem adapter into the **RS232** port on the MG90 router's rear panel, and hand-tighten the mounting screws.
2. Plug the DB9 male end of the serial adapter harness (part #060-1101) into the female connector on the back of the null modem adapter, and hand-tighten the mounting screws.
3. Use the GPS extension cable (GPS4-CBL) to connect the 2x2 Microfit on the serial adapter harness to the **GPS** port on the recorder's rear panel.



## Wiring the GPS (for DH series recorders\*)

1. Plug the DB9 female end of the null modem adapter into the **RS232** port on the MG90 router's rear panel, and hand-tighten the mounting screws.
2. Plug the DB9 male end of the serial adapter harness (part #060-1101) into the female connector on the back of the null modem adapter, and hand-tighten the mounting screws.
3. Use the GPS extension cable (GPS4-CBL) to connect the 2x2 Microfit on the serial adapter harness to the 2x2 Microfit on the DH adapter cable (part #060-1231).
4. Connect the other end of the DH adapter cable to the 1x4 Microfit on the DVR expansion harness (part #060-1059 - sold separately).
5. Connect the DVR expansion harness to the 2x4 Microfit EXPANSION socket on the DVR.



\*This does not apply to the DH4C recorder, which only supports RF GPS antenna connection.

## Configuring the Router

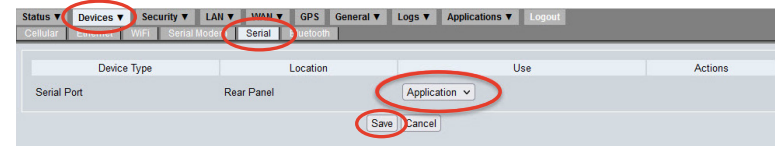
### TIP: Logging in to the AirLink MG90 Router

To set up the router for sending GPS signals to the recorder, you'll need to power up the device and log in to its local interface.

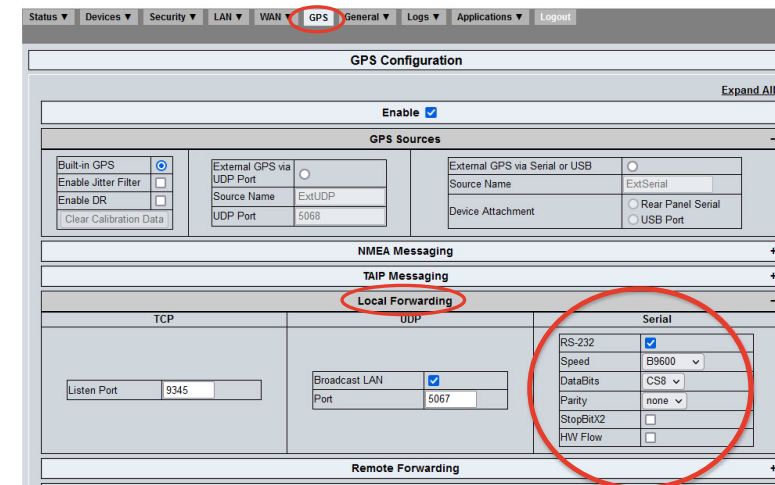
Follow the instructions in **Step 4** of the online *AirVantage User Guide* available at:

<https://source.sierrawireless.com/airvantage/mg90/>

1. Power up the router and log in to its local interface.
2. Select the **Devices** menu.
  - i. Choose the **Serial** tab.
  - ii. Under the **Use** field, choose **Application** from the pull-down menu.
  - iii. Click **Save**.



3. Select the **GPS** menu.
  - i. Expand **Local Forwarding**.
  - ii. Under the **Serial** section, select the **RS-232** check box. Leave the other fields at their default values.



Fold Here