



IN-CAR DIGITAL VIDEO RECORDING SYSTEM



Vehicle Viewer User Manual



Contents

Contents	2
Overview	3
Minimum Requirements	3
Installation.....	3
Software	3
Quick Install	3
Detailed Install	3
Hardware.....	20
Multiple NICs.....	20
Uninstall	23
Software	23
Vehicle Viewer	23
Configuration	23
DVR	23
Operation	24
Vehicle Viewer	24
Contact Information	29

Overview

This document provides both a quick install guide and a detailed step by step process for installing the FB2 Vehicle Viewer application software. All defaults are accepted during the install process, so the Quick Install should be sufficient in most cases.

Features

- Incorporates system video display and control in vehicle Laptop PC
- Allows remote installation of system DVR freeing vehicle interior space

Minimum Requirements

The minimum requirements for a PC to be capable of running the Vehicle Viewer application are as follows:

- Supported Operating Systems: Windows XP
- 512MB RAM
- Pentium 4, 2GHz
- 40GB disk
- 1 available Ethernet port

Installation

Software

Note: When updating the software, the older version must be uninstalled first. Refer to the Uninstall section to uninstall Vehicle Viewer prior to updating.

Quick Install

1. Run the vinstall-XX.exe and unzip the files to a local directory.
2. Run the setup.exe from the above folder, accept all defaults.
3. Close the VLC Player that opens, and accept any update settings.
4. Installation Complete.

Detailed Install

1. Copy the file vinstall-x-x.exe (where x-x is the version number of your installer) to a local directory.

2. Double click the file and the following dialog will appear. See Figure 1.

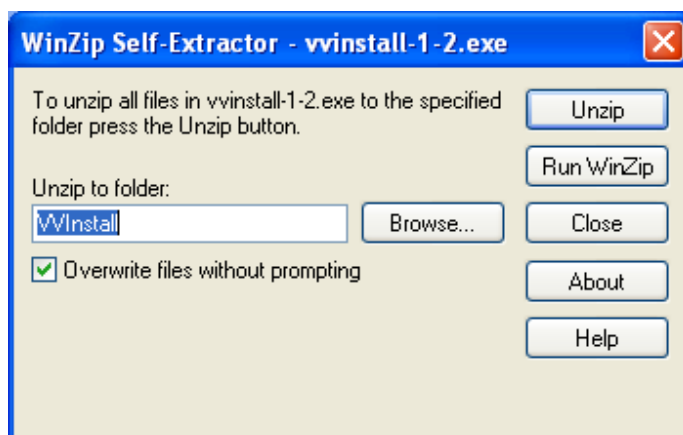


Figure 1

3. Choose a folder (default is the location of the vvinstall-x-x.exe) and click the *Unzip* button.
4. Browse to that folder and double click the *setup.exe* file.
5. Click *Next* on the *Welcome to the Certificate Import Wizard* screen. See Figure 2.



Figure 2

6. Leave the defaulted file name (remote-cert.p12) and click *Next* on the *Certificate Import Wizard – File to Import* screen. See Figure 3.

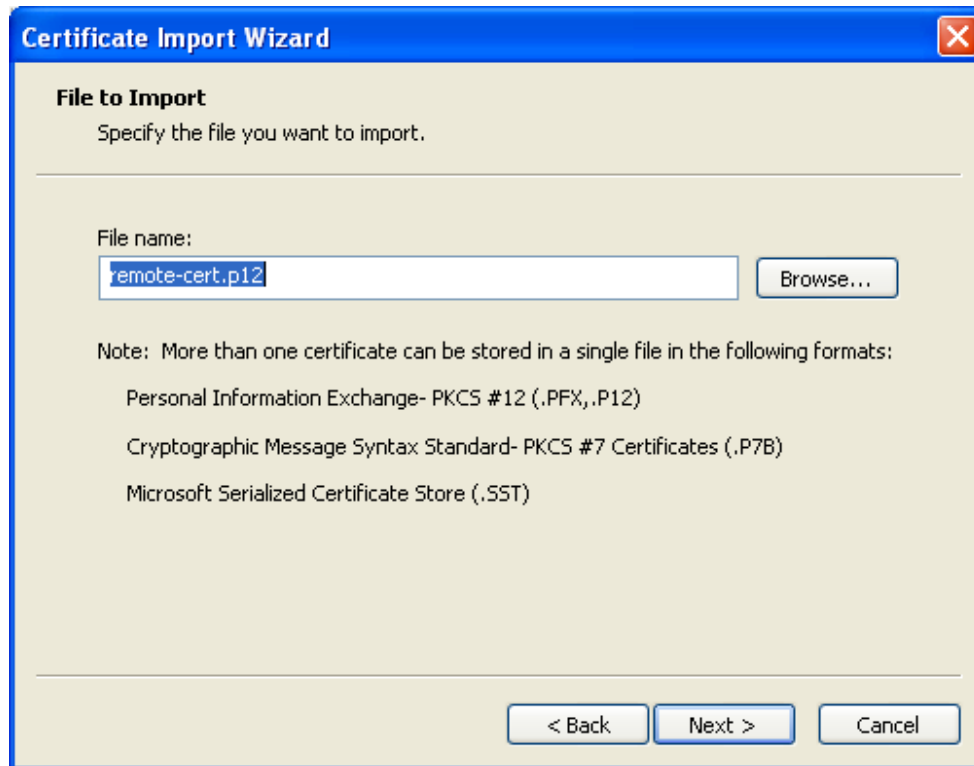


Figure 3

7. Leave the Password field blank. Leave both check boxes un-checked. Click *Next* on the *Certificate Import Wizard - Password* screen. See Figure 4.

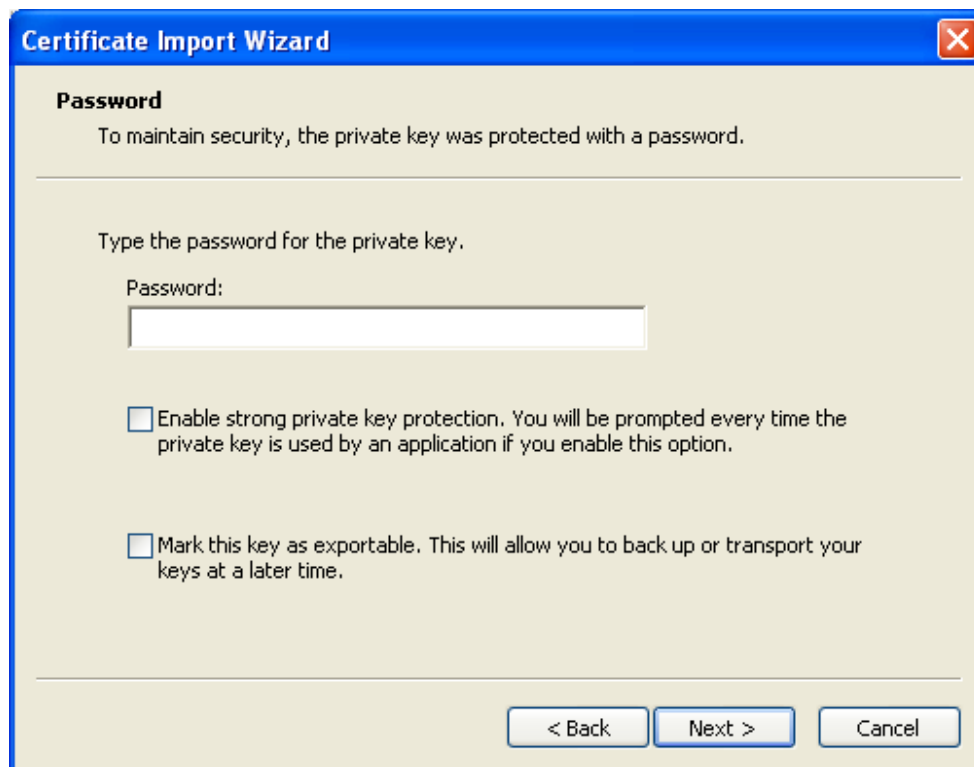


Figure 4

8. Leave the *Automatically...* option selected, and click *Next* on *Certificate Import Wizard – Certificate Store* screen. See Figure 5.

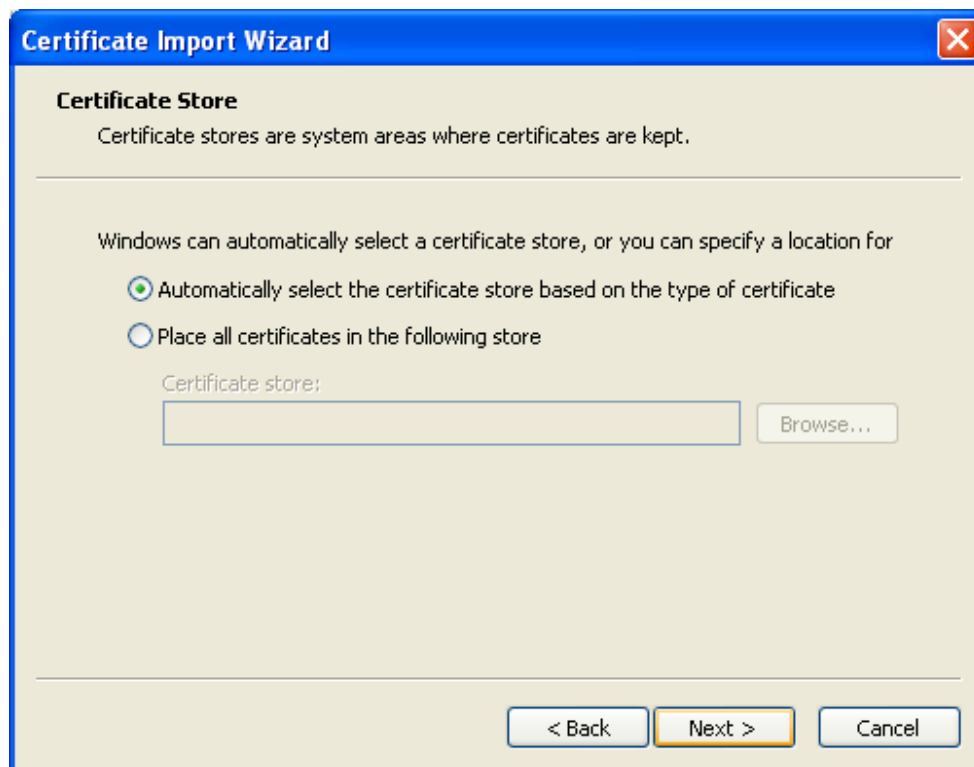


Figure 5

9. Click *Finish* on the *Completing the Certificate Import Wizard* screen. See Figure 6.



Figure 6

10. Click *Yes* on the *Security Warning* screen. See Figure 7.

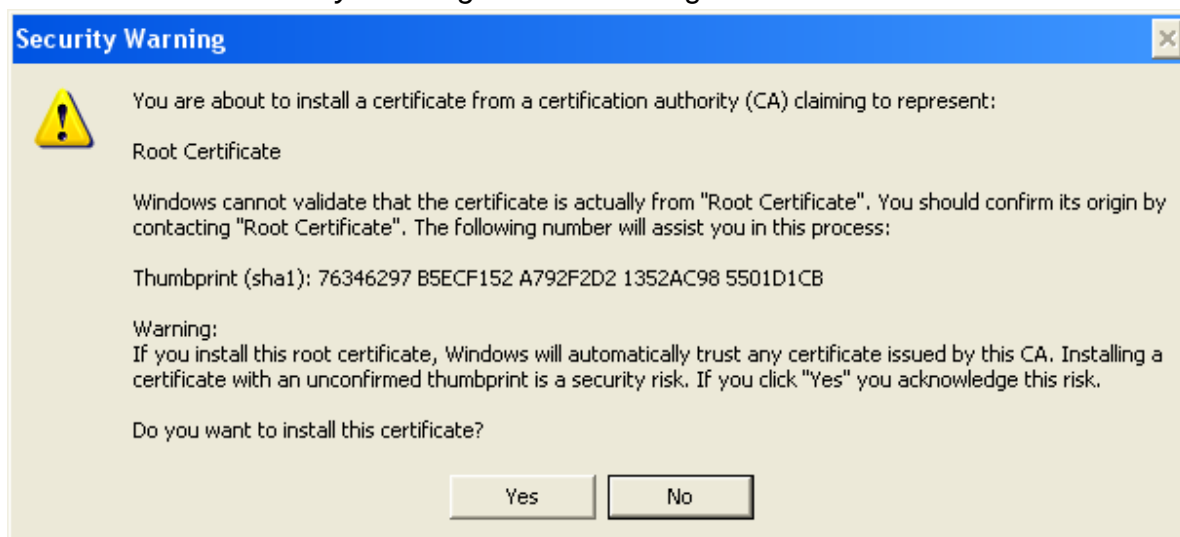


Figure 7

11. Click *OK* on the *Certificate Import Wizard* screen. See Figure 8.



Figure 8

12. Select *English* and click *OK* on the *Installer Language* screen. See Figure 9.



Figure 9

13. If VLC Media Player is already installed on your PC you will need to complete the following steps. If you are not presented with the dialog in *Figure 10*, then skip ahead to step 17. Otherwise click *Yes* to remove the previous version of VLC media player. See Figure 10.

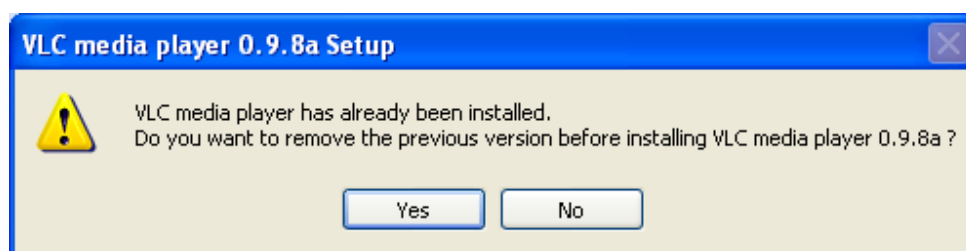


Figure 10

14. Click *Next* on the *VideoLAN VLC media player ### Uninstall* screen. See Figure 11.

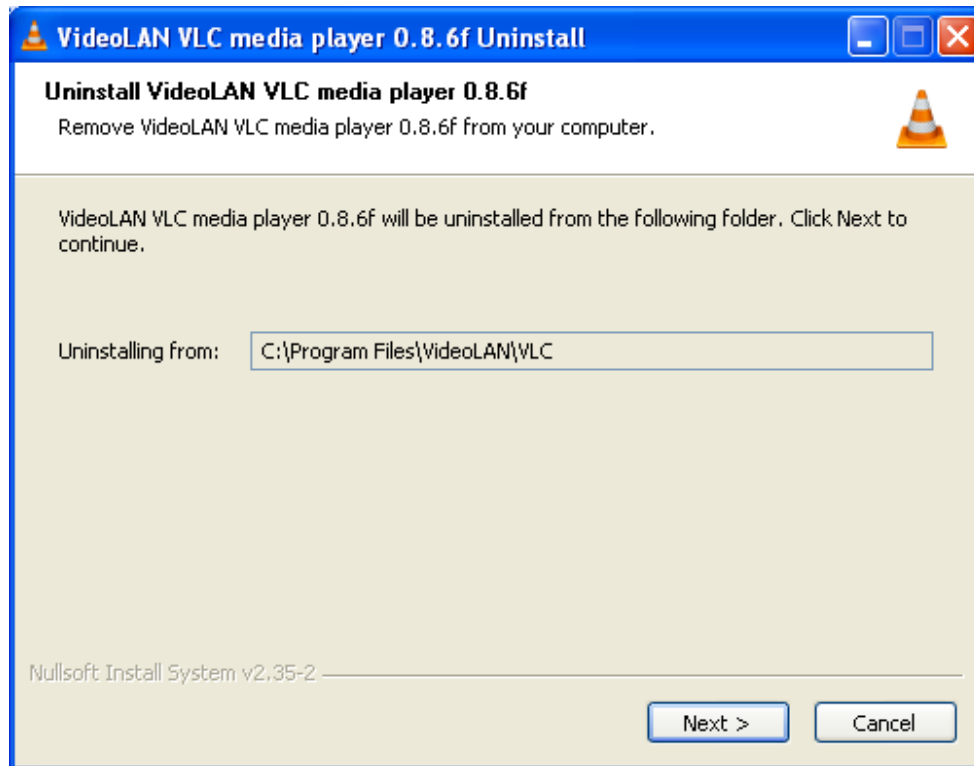


Figure 11

15. Click *Uninstall* on the *VideoLAN VLC media player ### Uninstall - Choose Components* screen. See Figure 12.

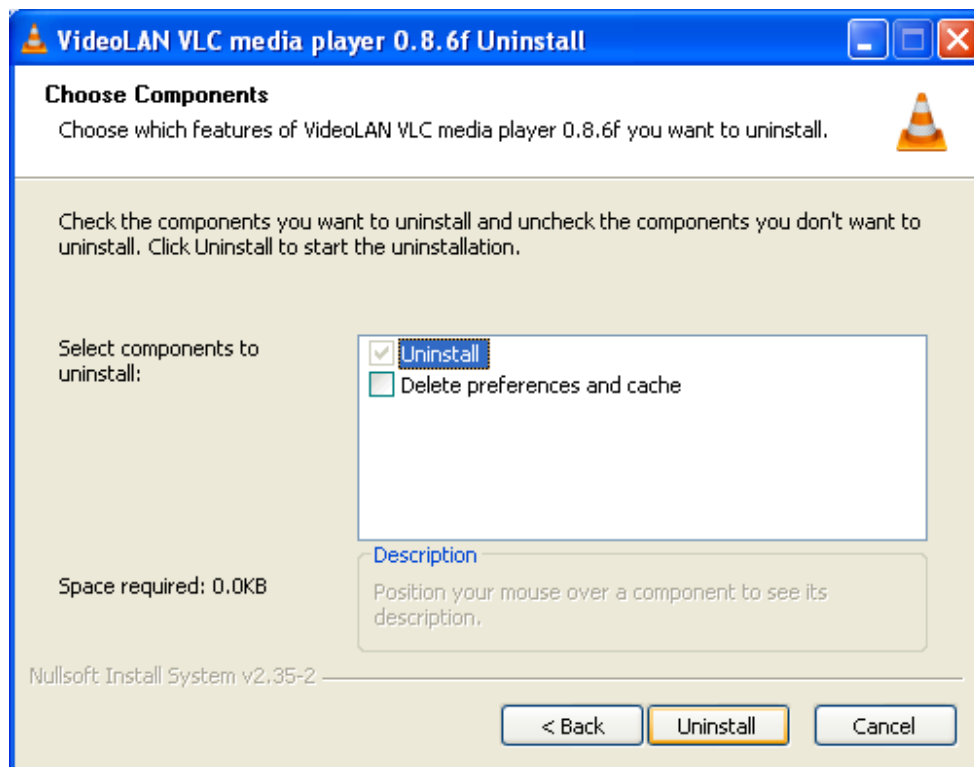


Figure 12

16. Click *Finish* on the *VideoLAN VLC media player ### Uninstall – Completing the VideoLAN VLC media player ### Uninstall Wizard* screen. See Figure13.

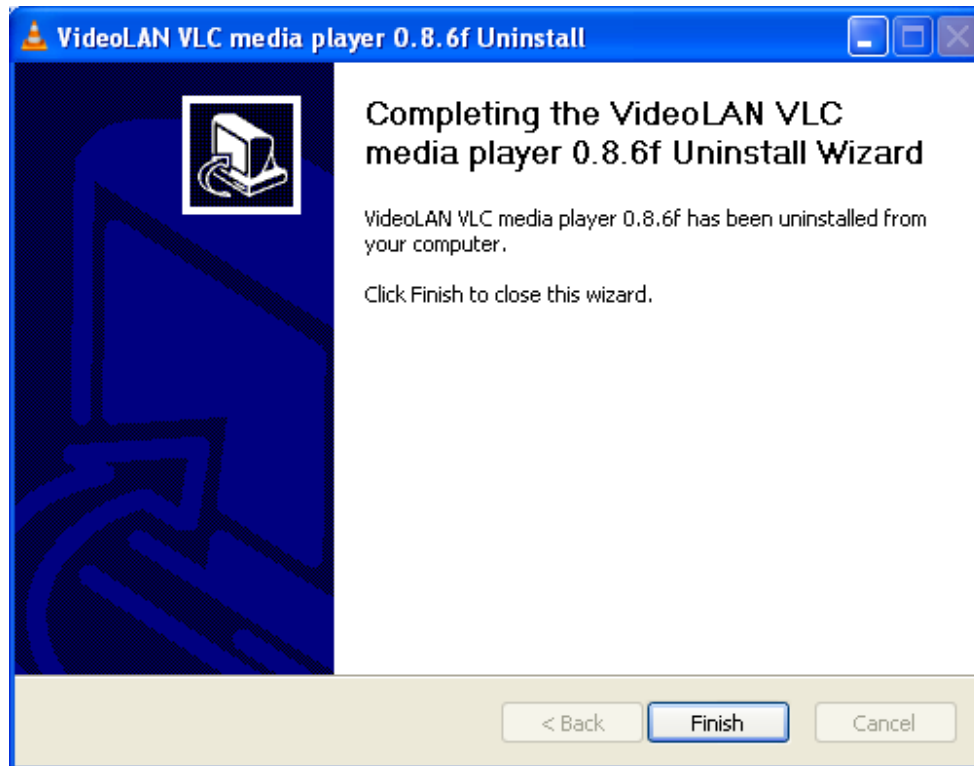


Figure 13

17. Click *NEXT* on the *VLC media player ### Setup – Welcome to the VLC media player ### Setup Wizard* screen. See Figure 14.



Figure 14

18. Click *I Agree* on the *VLC media player ### Setup - License Agreement* screen.
See Figure 15.

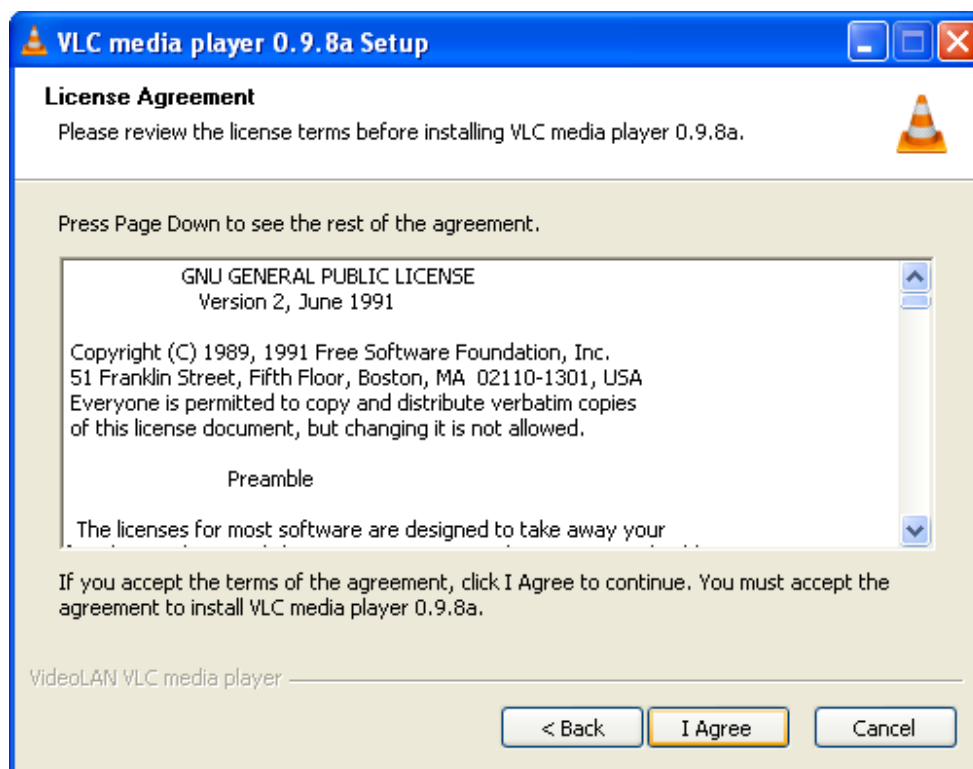


Figure 15

19. Click *Next* on the *VLC media player ### Setup - Choose Components* screen. See Figure 16.

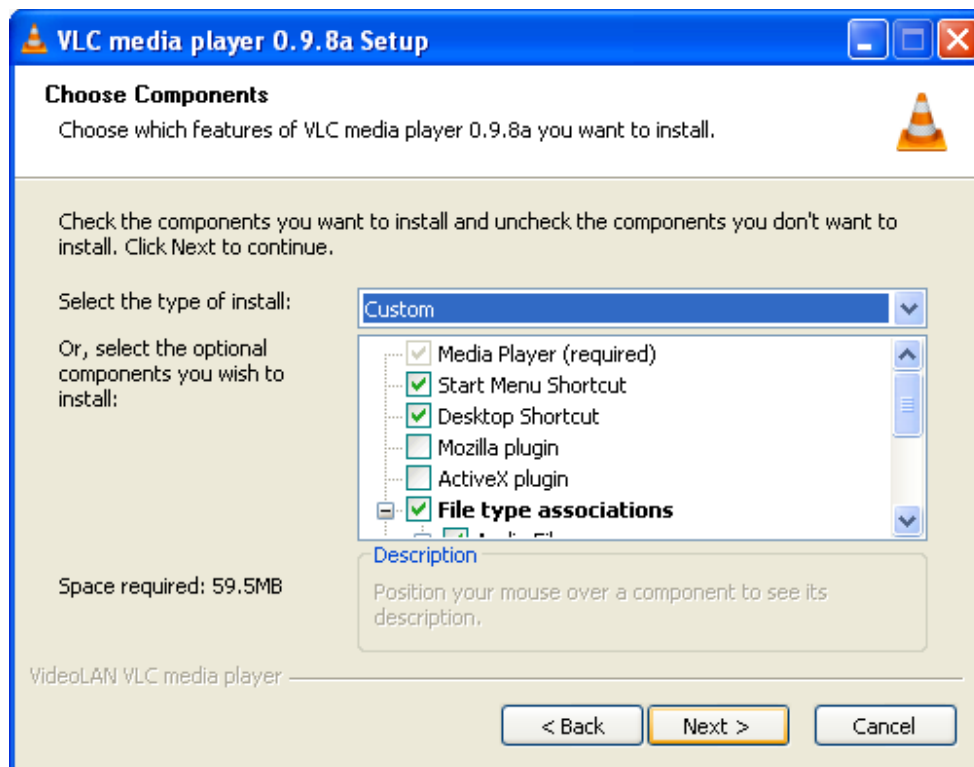


Figure 16

20. Click *Install* on the *VLC media player ### Setup - Choose Install Location* screen. See Figure 17.

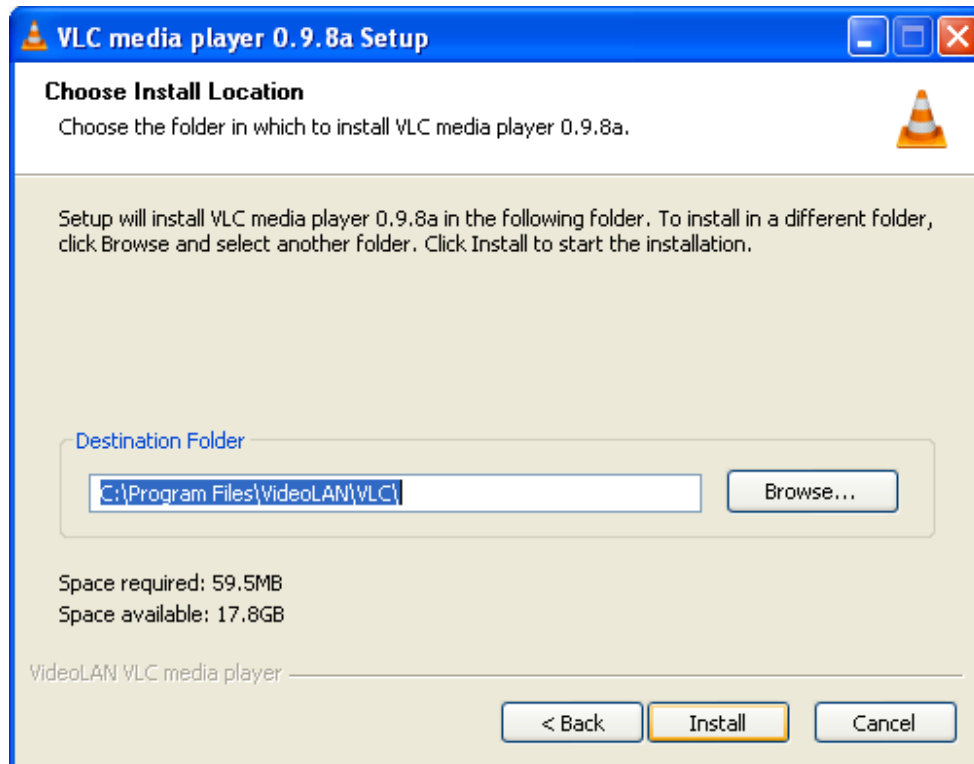


Figure 17

21. Click *Finish* on the *VLC media player ### Setup - Completing the VLC media player ### Setup Wizard* screen. See Figure 18.



Figure 18

22. Click **YES** on the *Registry Editor* confirmation screen. See Figure 19.

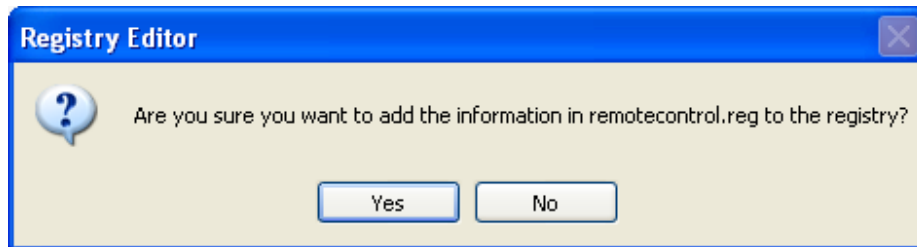


Figure 19

23. Click **OK** on the next *Registry Editor* screen. See Figure 20.



Figure 20

24. Click **OK** on the *VV Setup* screen. See Figure 21.

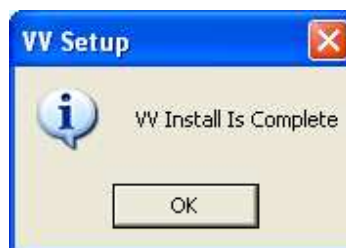


Figure 21

25. Click *OK* on the *Privacy and Network Policies* screen. See Figure 22.

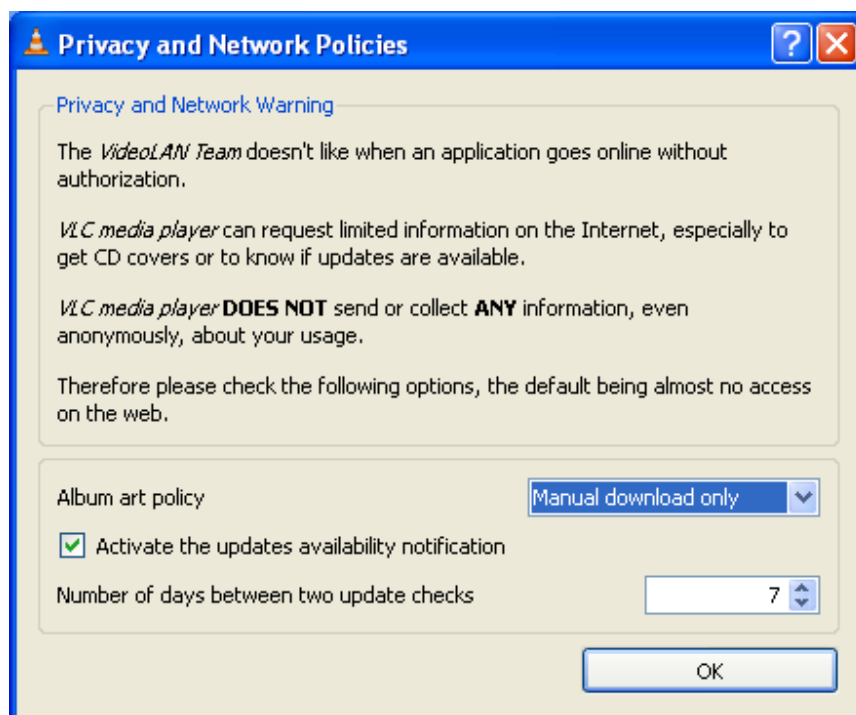


Figure 22

26. Close the VLC media player by clicking on the red close icon [X] in the upper right corner. See Figure 23.



Figure 23

27. The install is complete.

Hardware

1. Connect the Ethernet crossover cable from the DVR rear panel Ethernet connector to the laptop Ethernet connector.
2. The PC Ethernet port IP address must be the same subnet as the DVR Ethernet port IP address.

Multiple NICs

For PCs which have more than one network interface card (NIC), the following network configuration is done.

1. Navigate to the Network Connections by going to Start -> Control Panel. Double click on the Network Connections icon. See Figure 24.



Figure 24

2. The Network Connections window is displayed. Click on Advanced and select Advanced Settings. See Figure 25.

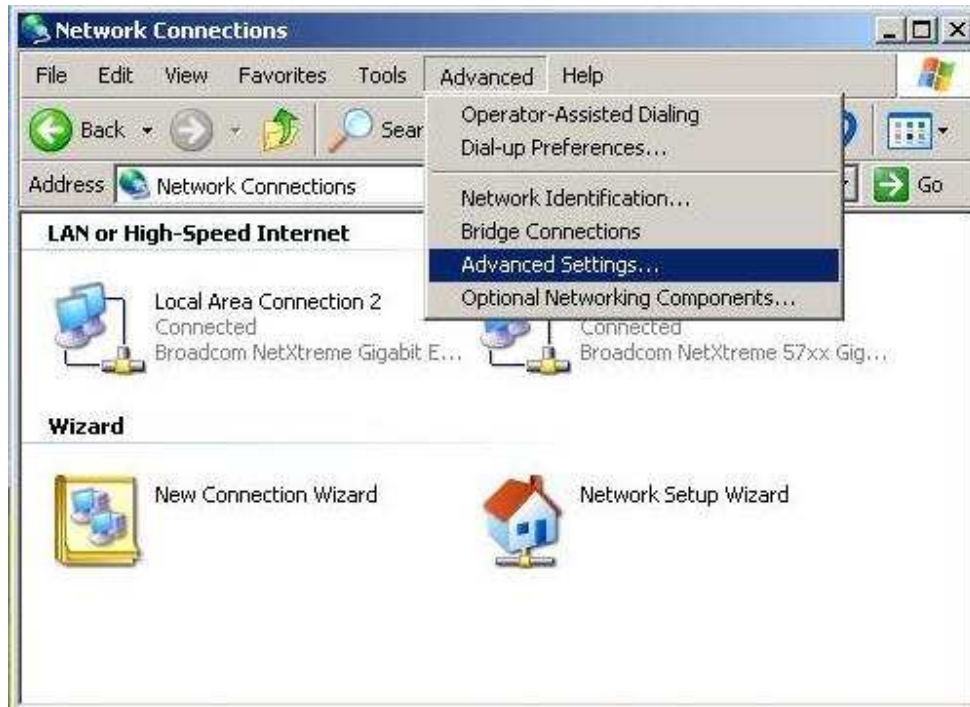


Figure 25

3. The Advanced Settings window is displayed. See Figure 26.

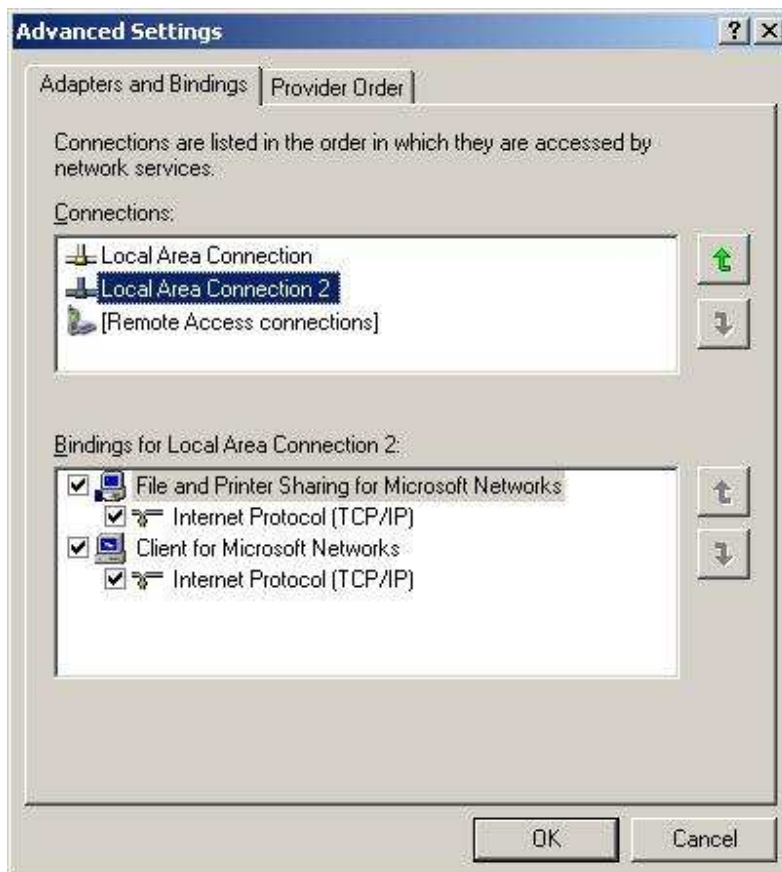


Figure 26

4. In the Adapters and Binding tab, highlight the connection that the DVR is connected to and move it to the bottom of the list of Local Area Connections using the arrows. Refer to Figure 26.
5. Click OK when done.

Uninstall

Software

Vehicle Viewer

1. From the command prompt, navigate to the folder where the Vehicle Viewer application was unzipped in step 1 of the Quick Install or step 3 of the Detailed Install (default is VVInstall).
2. Type `setup.exe -u` and press enter. See Figure 27.



Figure 27

3. The uninstall is complete when this message appears. See Figure 28.



Figure 28

4. Click OK, then close the command prompt window.

Configuration

DVR


1. The Wireless IP Address and the Ethernet IP Address must be on different subnets as required by TCP/IP.

2. The PC Ethernet port IP address must be the same subnet as the DVR Ethernet port IP address.
3. In Viewer Setup, set the Quality to 400k, FPS to 30, and Resolution to 640x480.

Operation

Vehicle Viewer

Note: DVR must be plugged in and recognized by the viewing PC before this program will run.

- Double click on the desktop Vehicle Viewer shortcut . The Vehicle Viewer application will open and the Login Dialog window is displayed. See Figure 29.

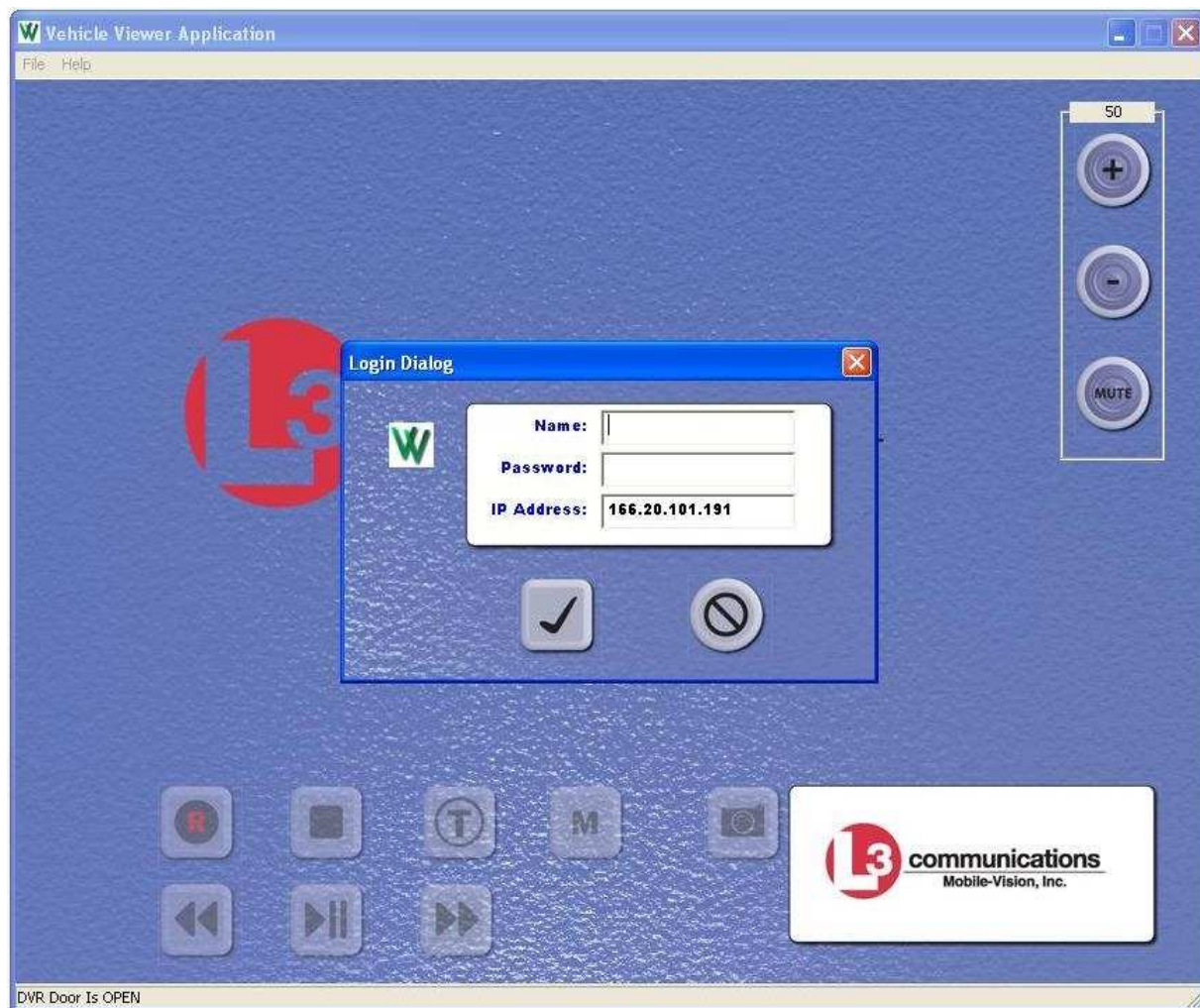




Figure 29

- Enter the:
Name: "admin" or another name created by the system administrator
Password: "admin" or another password created by the system administrator
IP Address: This is the IP address of the Ethernet port located on the rear panel of the DVR (Menu - Ethernet Setup – IP Address).
 . (The close  button closes the Login Dialog window.)

- System Monitor video and audio are displayed and heard on the PC. Viewer displayed control buttons are activated by clicking on the desired button similar to the DVR front panel control buttons. Refer to the Flashback 2 DVR User Manual for a functional description of the DVR front panel control button operation. The Menu button is disabled when the DVR door is closed. See Figure 30.



Figure 30

- The Menu button is enabled when the DVR door is open. The DVR configuration can be modified at this time. See Figure 31.



Figure 31

- Volume and Mute controls provide a way to change and mute the PC's audio output level. "+" increases the volume, and "-" decreases the volume. The range is 0 (off) to 100 (max). See Figure 32.



Figure 32

- The Vehicle Viewer window will display Live Video and Audio with the system control buttons active. Pressing the Vehicle Viewer Play/Pause button will cause the "Play Files" screen to be displayed. This indicates the Ethernet port control buttons are functional.
- With the DVR door closed, the menu button is disabled. When the DVR door is open, the Menu button is enabled and the DVR configuration menus can be accessed.
- A snapshot of the Vehicle Viewer viewing area can be captured by clicking the



camera button/icon at the desired time. It is automatically saved to the desktop in JPEG format with a timestamp in the file name.

Contact Information

Our goal at L-3 Mobile-Vision is to provide you with the most dependable, rugged equipment for your mobile workforce. To ensure that you get the most from your investment, L-3 Mobile-Vision technical experts are available for training and any questions. We take pride in our ability to provide you with the most comprehensive support available so you can minimize any downtime and allow your workforce to concentrate on their task at hand.

Technical Support

(800) 336-8475 ext. 3

E-Mail Support:

DESupport.MVI@L-3Com.com

Service

(800) 336-8475 ext. 3

fax: (973) 316-9509

service.MVI@L-3Com.com