



Fusion Wireless Upload

Ver. Q1 2014
Revised 09/26/2014

COBAN® Technologies Inc.
11375 West Sam Houston Parkway South, Suite 800
Houston, Texas 77031

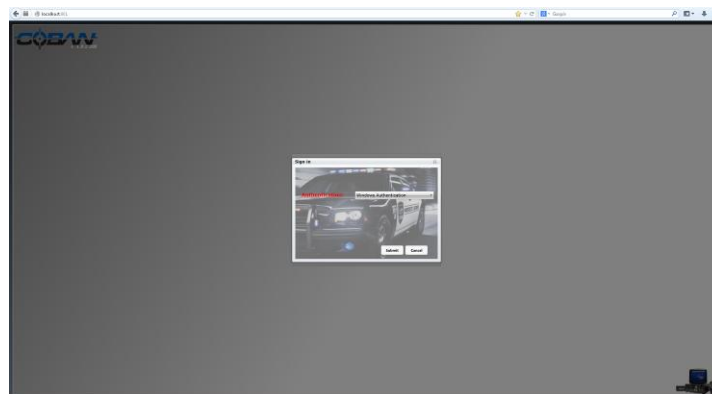
Tel: 1-281-925-0488
Fax: 1-281-925-0535

<http://www.cobantech.com>

Coban Command Center Wireless Setup

Accessing Coban Command Center

1. Using the Internet browser with the C-Cube certificate installed, enter the IP address followed by a port number to initiate the Coban Command Center.



2. Select the type of Authentication.
3. Enter the user ID and password provided by your administrator to access Coban Command Center. An administrator must log in to make changes to any settings.

Note: Contact your department's administrator if you do not know your specific user ID and password.

A 'Sign in' dialog box with a background image of a police car. The 'Authentication:' label is in red. A dropdown menu is open, showing 'Windows Authentication' selected. Below the dropdown are 'Submit' and 'Cancel' buttons.

Sign in

Authentication: Windows Authentication

Submit Cancel

A 'Sign in' dialog box with a background image of a police car. The 'Authentication:' label is in red, and the dropdown menu shows 'Standard ID' selected. Below the dropdown are 'User Name:' and 'Password:' labels in red, each followed by a white input field. At the bottom are 'Submit' and 'Cancel' buttons.

Sign in

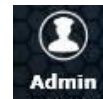
Authentication: Standard ID

User Name:

Password:

Submit Cancel

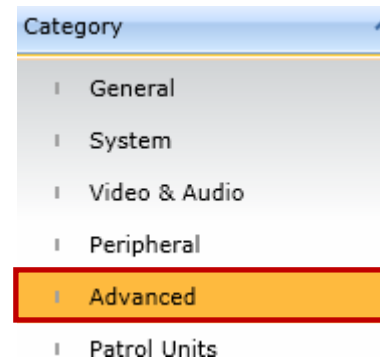
- Once logged in, click on the Admin button on the bottom of the page and select templates.



- Select the template in which wireless upload is implemented to.

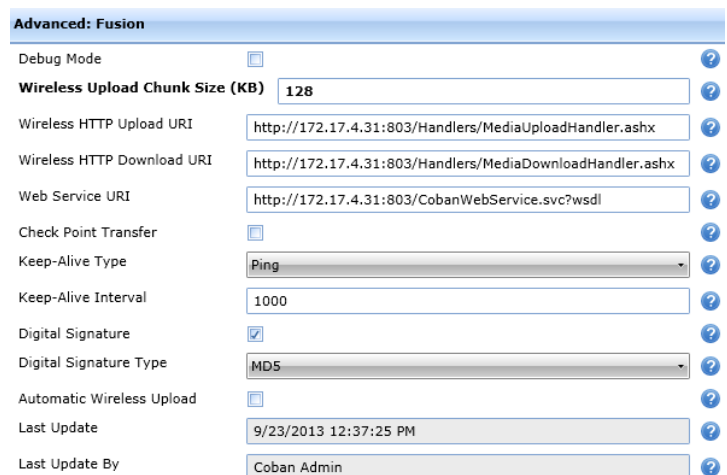


- Under the category column, select Advanced.



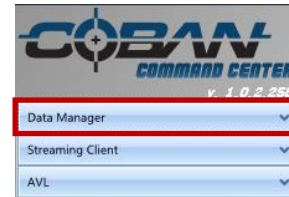
- Setup the wireless settings by filling in the following.

- Wireless HTTP Upload URI
- Wireless HTTP Download URI
- Web Service URI
- Keep-Alive Type
- Keep-Alive Interval
- Digital Signature
- Digital Signature Type
- Automatic Wireless Upload

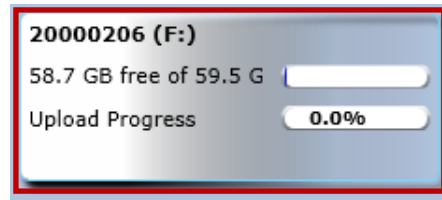


- Connect the mobile drive to the computer.

9. Select **Data manager** from the menu on the left.



10. Select the drive to check out.



11. Click **Upload** on the top of the page.

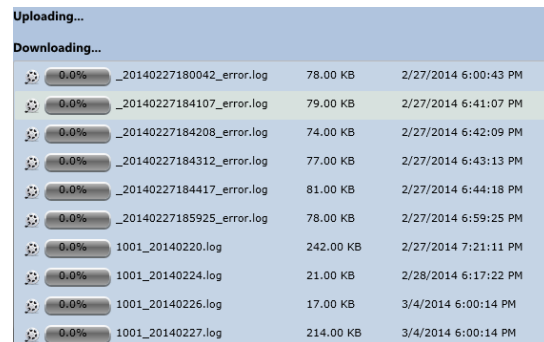


12. A new window will pop up. Select the **User**, **Unit** and **Upload (Video and Checkout MHDD)**.

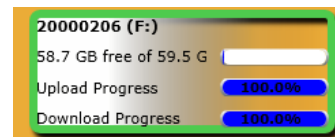


13. Click **OK** to continue.

14. If there are videos and checkout is selected, the system will automatically upload any media if present. The main window will show the progress of every file available.



15. Once the process is complete, the drive will flash with a green outline and show 100% complete. The drive can now be removed. Make sure the drive is removed safely by ejecting it first.



Fusion Wireless Hardware Setup

1. Mount the wireless module in an area where the antenna would have a clear view to the outside of the vehicle.
2. Connect the external wireless module to the RJ45 (Ethernet) and USB port on the back of the Fusion unit.



3. Make sure the pen drive is checked out with the new wireless configuration and re-insert into the Fusion system.

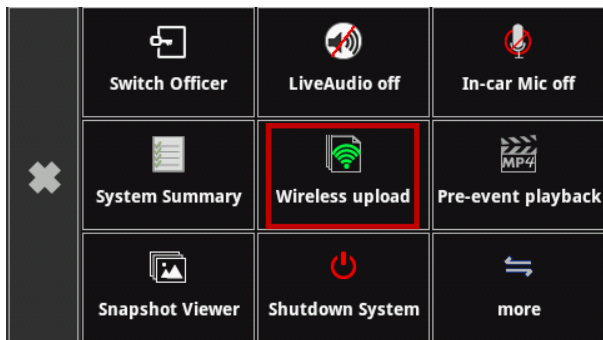
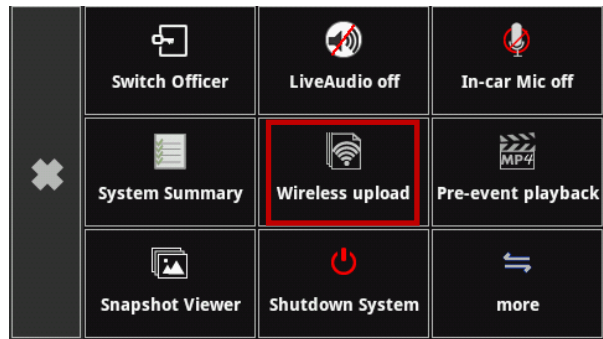


Activating Wireless Upload on Fusion

1. On the camera view screen, click **Menu**.

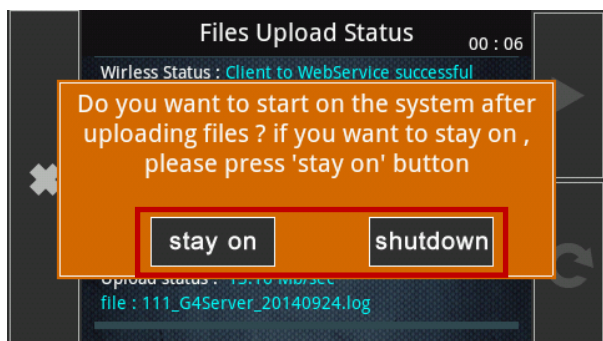


2. Look for the **Wireless Upload** icon and wait for the WIFI signal bars to go from grey to green.

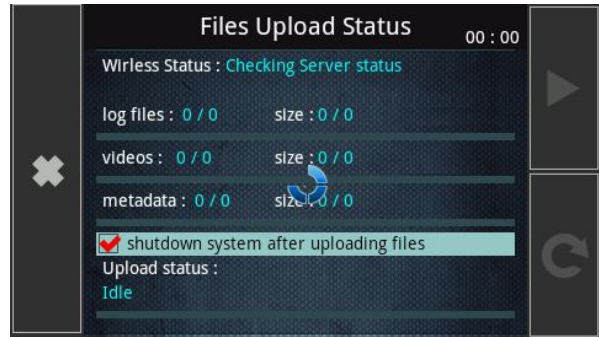


3. A menu will pop up for the user to select **Stay On** or **Shutdown**.

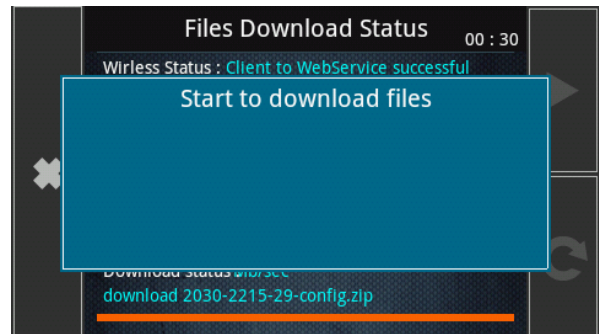
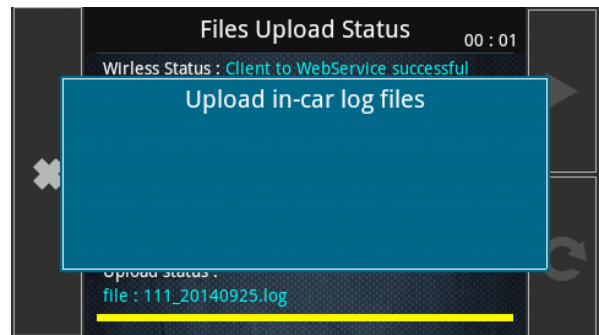
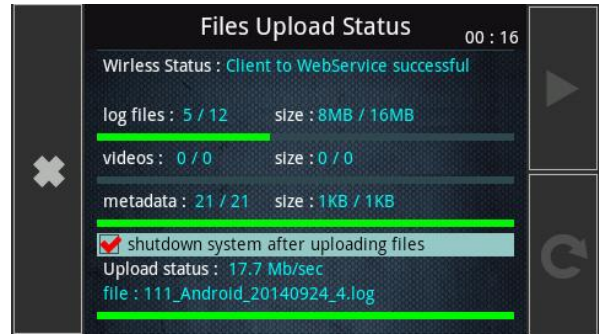
Stay on will restart the video recording application after upload. Shutdown will shut down the system after the upload completes.



The user will be able to select or deselect **Shutdown system after uploading files** if he or she decides to change how the system will react after uploading.



4. The following pictures will show the upload progress.



5. If **Shutdown** is selected the system will display a shutdown progress screen, otherwise it will take the user back to the log in screen.

