

# **Explorer™ Mobile Digital Video Recording System: DVR Remote Viewer**

**Quick Reference Guide**



700-0056 R001



## Seon Design® Inc.

Seon Design Inc. is a specialist in the design and manufacture of video surveillance systems for mobile applications. Seon has been the preferred solutions provider for the pupil transportation industry since 1999. Today, we are proud that our success in this area has made us the leading manufacturer of mobile video surveillance systems in North America.

### Contact Information

Seon Design Inc.  
Unit 111, 3B Burbridge Street  
Coquitlam, BC  
Canada V3K 7B2

Telephone	604.941.0880
Toll Free Telephone	1.877.630.7366
Fax	604.941.0870
Toll Free Fax	1.866.664.3677
Email	sales@seon.com
Web site	www.seon.com

### Seon Design Inc. Trademarks

Seon Design Inc. holds the following trademarks:

Explorer™ is a registered trademark of Seon Design Inc.  
“Seon Design” is a registered trademark of Seon Design Inc.  
The Seon logo ( **SEON** ) is a registered trademark of Seon Design Inc.

In this User Manual there are references to trademarks, registered trademarks, and product names not owned by Seon Design Inc. that are the property of their respective owners. They are used in this User Manual for identification purposes only.

### User Manual Revision

This is the October 2007 revision for this User Manual and is copyright, October 2007 of Seon Design Inc. All rights reserved.

### Exclusion of Liability

SEON DESIGN INC.:

(a) MAKES NO REPRESENTATION, WARRANTY, GUARANTEE OR COVENANT, EXPRESS OR IMPLIED, AS TO THE ACCURACY, SUFFICIENCY OR SUITABILITY OF ANY TECHNICAL OR OTHER INFORMATION PROVIDED IN THIS USER MANUAL OR ANY OTHER USER OR OTHER MANUAL OR OTHER DOCUMENTATION PROVIDED BY SEON DESIGN INC. WITH RESPECT TO THE PRODUCT(S) DESCRIBED HEREIN, INCLUDING WITHOUT LIMITATION ANY DESCRIPTION OF GOODS OR SERVICES, SPECIFICATIONS, MODELS, DRAWINGS, OR DIAGRAMS.

(b) DOES NOT ASSUME AND SHALL NOT BE SUBJECT TO AND DISCLAIMS ANY AND ALL RESPONSIBILITY AND/OR LIABILITY FOR LOSSES, DAMAGES, COSTS OR EXPENSES ARISING OUT OF BREACH OF CONTRACT OR OF WARRANTY, TORT (INCLUDING NEGLIGENCE AND STRICT LIABILITY) OR OTHERWISE, WHETHER SPECIAL, DIRECT, INDIRECT, CONSEQUENTIAL, INCIDENTAL, SPECIAL OR CONTINGENT, WHICH MIGHT ARISE OUT OF THE USE OF SUCH INFORMATION. THE USE OF ANY SUCH INFORMATION WILL BE ENTIRELY AT THE USER'S RISK; AND

(c) EXPRESSLY DISCLOSES THAT IF THIS MANUAL IS WRITTEN IN ANY LANGUAGE OTHER THAN ENGLISH, THAT ALTHOUGH SEON DESIGN INC. HAS USED REASONABLE CARE TO MAINTAIN THE ACCURACY OF THE TRANSLATION FROM THE ENGLISH LANGUAGE, THE ACCURACY OF SUCH TRANSLATION IS NOT GUARANTEED OR WARRANTED BY SEON DESIGN INC. PLEASE REFER TO THE ENGLISH LANGUAGE VERSION OF THIS USER MANUAL FOR APPROVED SEON CONTENT. THE ENGLISH LANGUAGE VERSION IS AVAILABLE UPON REQUEST FROM THE SEON CUSTOMER SERVICE DEPARTMENT.

Please refer to the Seon Design Inc. Product Warranty applicable to the Product(s) described in this User Manual which exclusively sets forth Seon Design Inc.'s entire liability arising from or in connection with such product(s) and their use and the exclusive remedies available for purchasers and users thereof.

### Document Part Number

This User Manual is valid for Seon Design Inc. Document Part Number 700-0056.

PRINTED IN CANADA



# Viewing the Explorer DVR through the DVR Remote Viewer

The DVR Remote Viewer is a Web-based program that lets you access an Explorer digital video recorder (DVR) from a PC using the Internet Explorer® Web browser. Internet Explorer 6 or higher is required to use the DVR Remote Viewer.

The DVR Remote Viewer is for use with the Explorer series of Mobile Digital Video Recording (DVR) Systems from Seon Design, which includes the EX4 and EX8 family of products.

## Introduction

This *Quick Reference Guide* describes how to use the DVR Remote Viewer to access an Explorer digital video recorder (DVR) from a PC using the Internet Explorer Web browser.

When you first log on to the DVR Remote Viewer, you are in Live mode which is the view of the video currently being recorded. You can playback recorded video while the DVR continues to record video footage. Exit the playback mode by clicking the **Stop** button and returning to Live mode.

Using the Search features in the DVR Remote Viewer, you can:

- Search the video by Time
- Search the video by Event (including Alarm and video loss)
- Search the Event List
- Stream audio
- Play the video forward or backward
  - Change the playback speed from  $\times 1$ ,  $\times 2$ ,  $\times 4$ ,  $\times 8$ ,  $\times 16$  the normal speed
  - Step forward or back by one or more frames

Using the Archive features in the DVR Remote Viewer, you can:

- Archive video to an .ARV file
- Download and use the DVRViewer or Hard Drive (HD) Reader applications to playback the .ARV file, save it as a JPEG file or to .AVI, which is a common file format for saving video files.

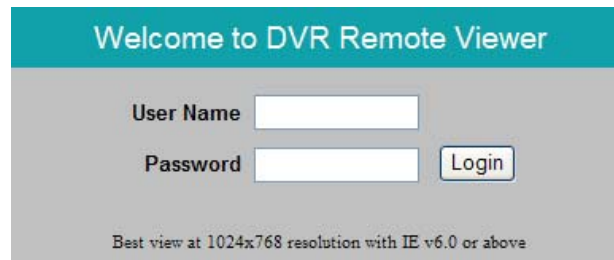
## Viewing the DVR through the DVR Remote Viewer

The DVR and other components in the system should already be installed and configured in order to access the DVR via the Web browser. For complete information on installing, operating, or configuring the Explorer DVR, see the *Installation and User's Guide* for your product. See also the *Hard Drive (HD) Reader User's Guide* (document part number 700-0036) for using the HD Reader to view, archive, and save video files.

### To access the DVR from a PC using Internet Explorer:

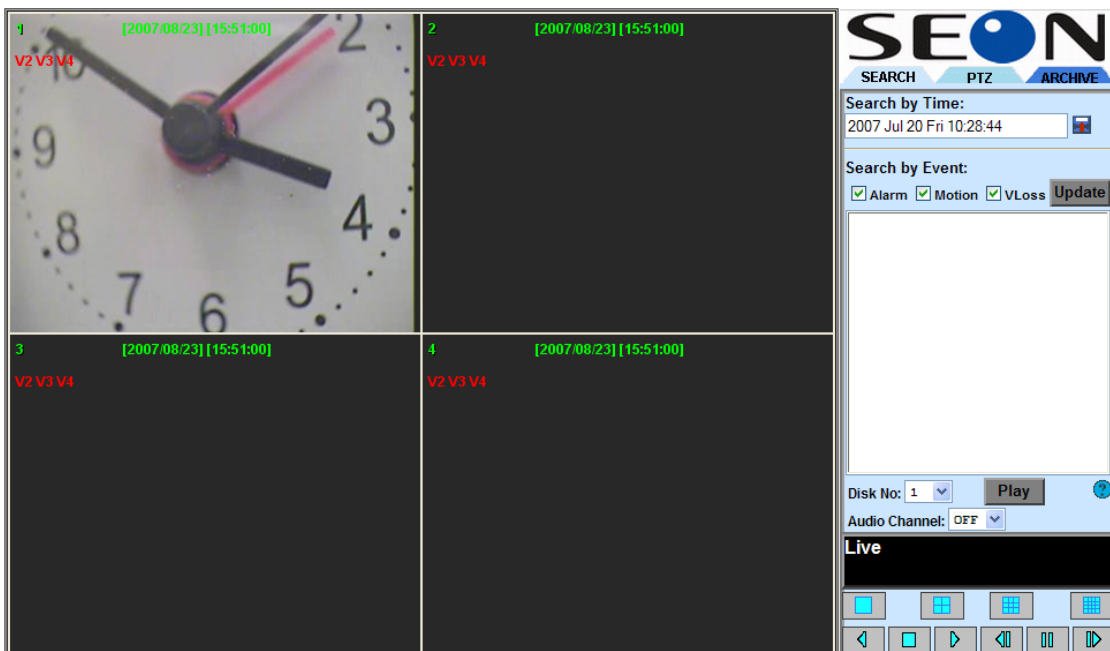
1. Open Internet Explorer from your PC.
2. In the Address bar of the Web browser, type in the following information:  
**http:// LAN or IP address of your DVR.**  
For example, http://192.168.1.201

Figure 1 shows the DVR Remote Viewer logon menu.



**Figure 1** Welcome to DVR Remote Viewer logon menu

3. Enter a User Name and Password to access the Remote Viewer.  
The User Name and Password are the same as the ones used in the Network sub-menu of the DVR's main menu. The User Name is not case sensitive. The default User Name is admin. The default Password is 11111111.
4. Click on the **Login** button or press Enter on the keyboard.  
The Remote Viewer main window appears, similar to the one shown in Figure 2. The camera title, the date and time, and any video loss information (for example, V2, V3, and V4) are displayed on the window.



**Figure 2** Remote Viewer main window

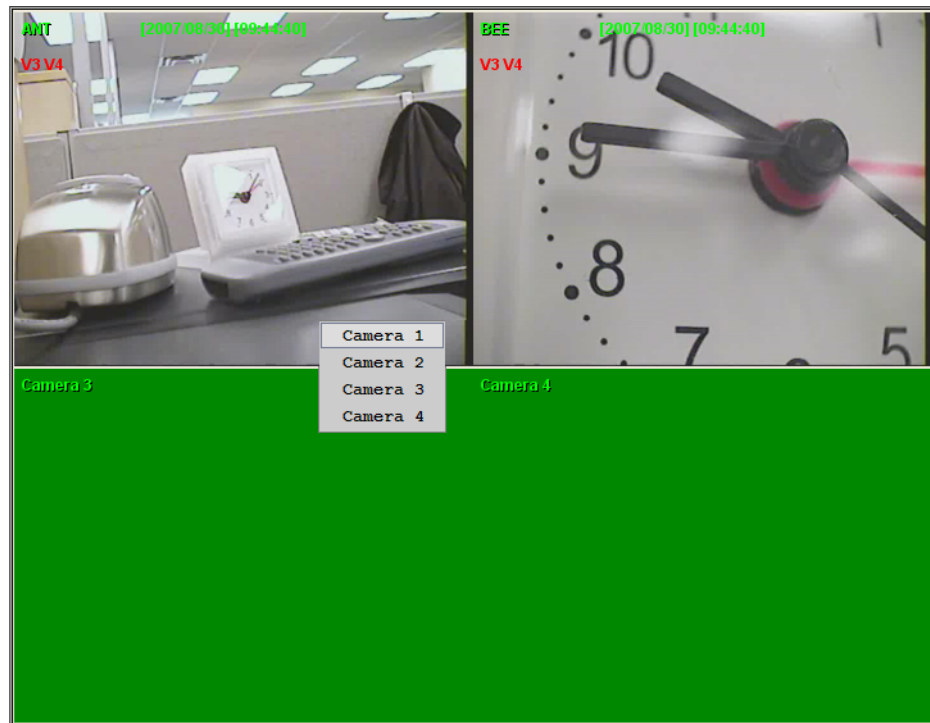
The left side of the window contains the video display area which can be set to different views, depending on the number of cameras installed. Quad screen view with four video channels is shown in Figure 2. If a camera is not attached to the video channel, the screen will appear blank and display V2 (or another number) indicating video loss on that camera.

## Setting the Video Channel

### To set the video channel:

1. Right-click anywhere in the video display area of the DVR Remote Viewer window to display a camera menu, as shown in Figure 3.
2. Select from Camera 1 to Camera 4 camera to set the video channel to the desired camera.

For example, selecting Camera 1 in the top left frame sets the video channel to 1. The camera title is displayed in the top left corner.



**Figure 3** Camera menu

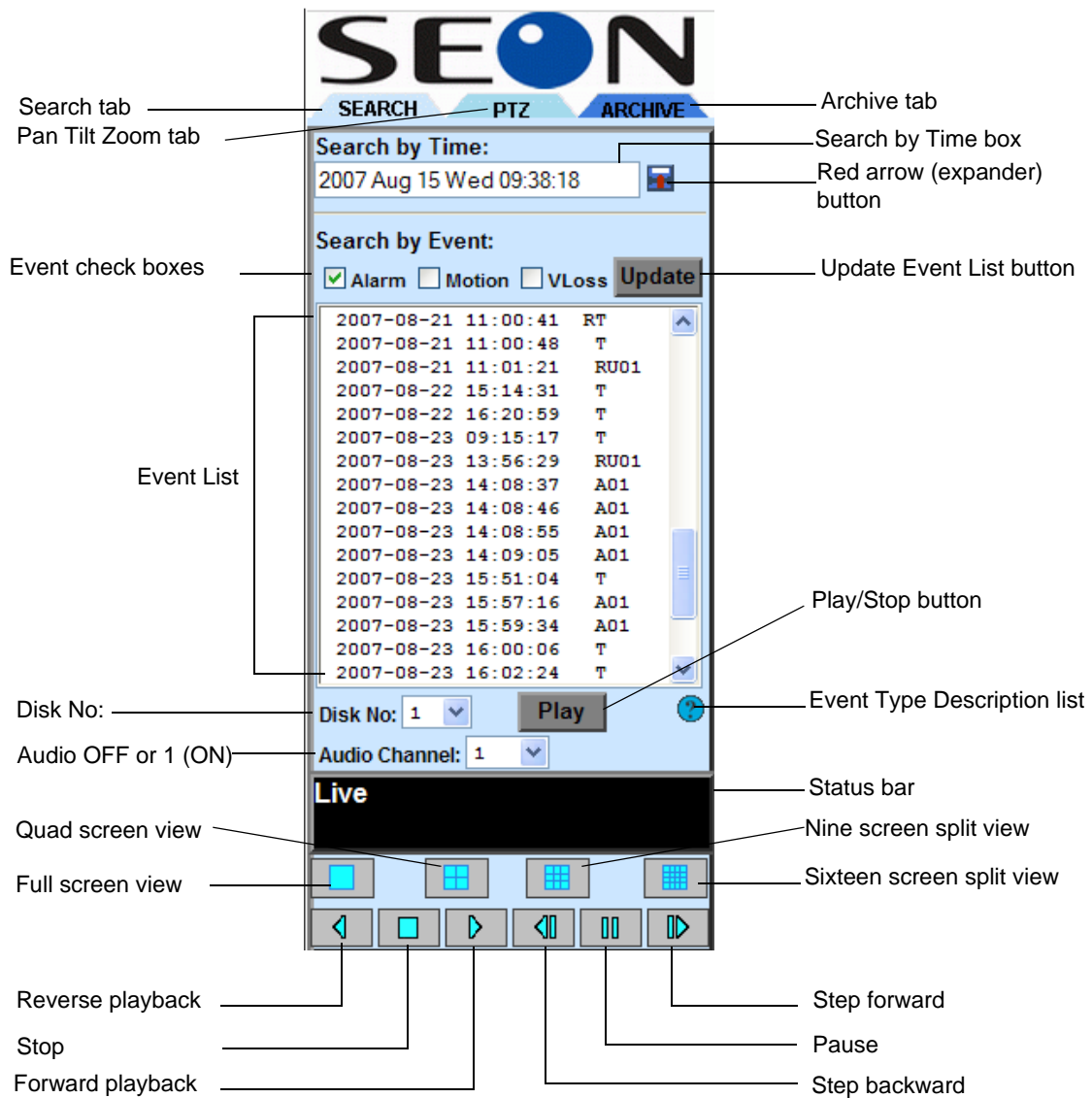


## Searching a Video File

The right side of the DVR Remote Viewer window contains the Search and Archive windows.

Using the Search Window

The Search window, shown in Figure 4, provides the controls for searching video clips. Search video clips by searching by time or searching by event.



**Figure 4** Search window

**Table 1** Search window features

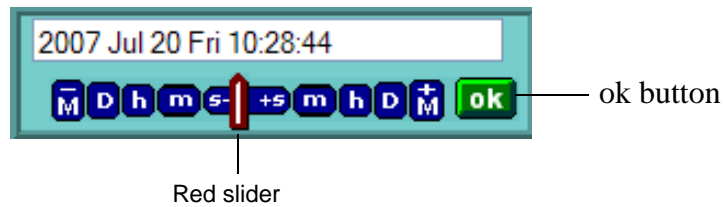
Item	Description	Item	Description
<b>Search tab</b>	Search the video by Time or by Event.	<b>Archive tab</b>	Archive video (see “Archiving a Video File” on page 8).
<b>PTZ (Pan Tilt Zoom) tab</b>	The PTZ feature is not available.	<b>Search by Time box and Red arrow (expander) button</b>	Click on the <b>Red Arrow</b> button to display an expanded Date and Time bar.
<b>Event check boxes</b>	Select one or two check boxes. <ul style="list-style-type: none"> <li>• Alarm</li> <li>• Motion (not available)</li> <li>• VLoss (Video loss)</li> </ul>	<b>Update Event List button</b>	Click this button to update the event list.
<b>Event List</b>	Displays the date, time, and event type (which is represented by an upper cased letter and camera number.)	<b>Play/Stop button</b>	Playback or stop the playback of selected video files.
<b>Disk No:</b>	Select the disk if more than one is available.	<b>Event Type Description list</b>	Provides a listing of the event types and a brief description.
<b>Audio OFF or 1 (ON)</b>	Turn the Audio Channel to OFF or to 1 for ON.	<b>Status bar</b>	Provides information on the status of the DVRViewer. Live means that the screen is displaying what is being recorded on the DVR.
<b>Quad screen view</b>	Shows the view from four cameras.	<b>Nine screen split view</b>	Shows the view from nine cameras.
<b>Full screen view</b>	Shows a full screen view from a single camera.	<b>Sixteen screen split view</b>	Show the view from sixteen cameras.
<b>Reverse Playback</b>	Click this button to playback the video at $\times 1$ , $\times 2$ , $\times 4$ , $\times 8$ , $\times 16$ the normal speed. Each time you click Reverse Playback, the speed changes.	<b>Step forward</b>	Click this button to step forward one frame at a time when the video is paused.
<b>Stop</b>	Click this button to stop video playback and go back to Live mode. The DVR continues to record as you view the recorded video. Live mode simply returns the view to the video currently being recorded.	<b>Pause</b>	Click this button to pause the video clip.
<b>Forward Playback</b>	Click this button to increase the playback speed by $\times 1$ , $\times 2$ , $\times 4$ , $\times 8$ , $\times 16$ the normal speed. Each time you click Forward Playback, the speed changes.	<b>Step backward</b>	Click this button to step back one frame at a time when the video is paused.

## Searching Video Clips by Time

### To search by time:

1. In the Search by Time: section, click the **red arrow** button.

An expanded Date and Time bar appears. The expanded Date and Time bar shown in Figure 5 contains a time box which displays the year, date, and time in 24-hour format.



**Figure 5** Expanded Date and Time bar

The blue icons on either side of the red slider represent the following items:

Item	Description
M	Month
D	Date and day of the week
h	Hour
m	Minute
s	Second

Item	Description
-	The negative (-) sign indicates that clicking on an icon to the left of the red slider will decrease the value.
+	The plus (+) sign indicates that clicking on an icon to the right of the red slider will increase the value.

2. Select the date and time that the event occurred. The year is set automatically and is not a changeable value.

---

**Important:** Changes to the date/time are limited by the range of data available on the hard drive.

---

Dragging the red slider to the left will set the time to when the video recording began. Dragging the red slider to the right will set the time to when the video ended recording.

3. Press the **ok** button.

The video clip will begin playback.

4. Use the video playback controls to change the direction or speed, pause or stop playback.

The status bar indicates the status of the video playback.

## Searching Video Clips by Event

### To search by event:

1. Select the event type check box. At least one type of event must be selected.
  - Selecting the Alarm check box will include alarms.
  - Selecting the VLoss check box will include video loss events.The Motion events feature is not available.
2. Click the **Update** button to refresh the event list.

All the events of the selected type will be displayed in the event description list in the following format:  
Year-Month-Day Hour:Minute:Second Event Type Camera Number (option)
3. Click on the **?** button (Event Type Description List) for more information on the meaning of the event types.)
4. Select an event from the list that you wish to playback.
5. Click on the **Play/Stop** button to playback the selected event. Clicking on the **Stop** button will stop playback of the event and return the view to Live mode, which displays the video currently being recorded.

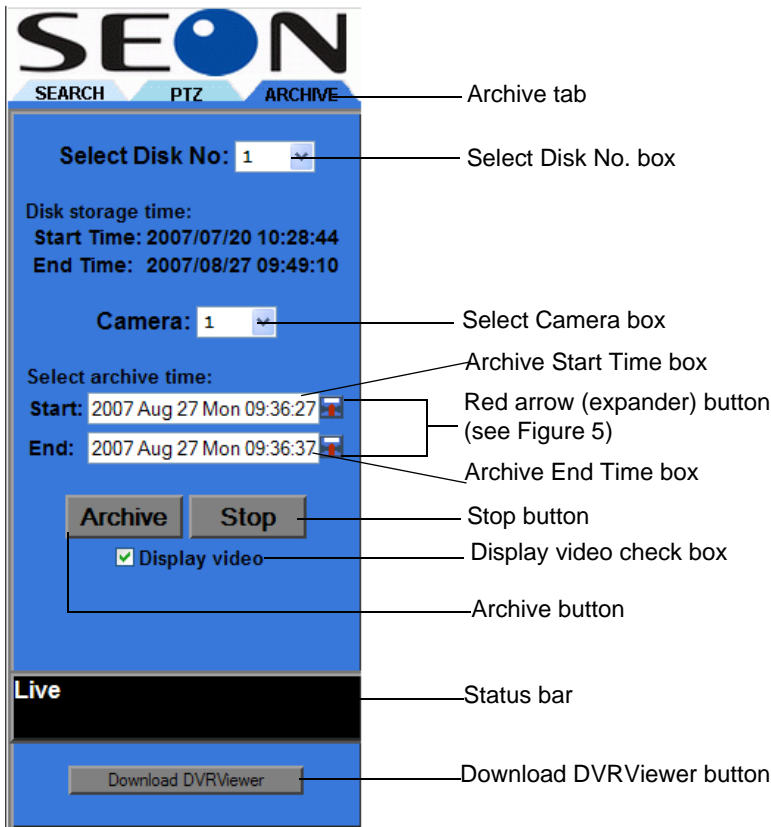
## Archiving a Video File

The DVR Remote Viewer provides the following options for archiving video from the DVR hard drive to your computer's hard drive.

- Archive video to .ARV files from the desired camera
- Select the archive start time and end time
- Save an image from the .ARV file as a .jpg file
- View the .ARV files using DVRViewer

Using the Archive window

The Archive window shown in Figure 6 provides the controls for searching video clips.



**Figure 6** Archive window

**Table 1-1** Archive window features

Item	Description
Archive tab	Click on the Archive tab display the Archive window.
Select Disk No:	If the DVR has more than one hard disk, select the desired disk.
Select Camera	In the camera box, click on the <b>down arrow</b> button and select the camera.
Red arrow (expander) button	Click on the <b>red arrow</b> button to display an expanded menu for selecting the Month, Day, Hour, Minute, and Second of the archive time. See “Searching Video Clips by Time” for information about the Date and Time bar.
Stop button	Click this button to stop archiving.
Archive button	Click this button to start archiving.
Display video check box	Select the Display video check box to view the video as it is being archived.
Status bar	Provides information on the status of the DVR Remote Viewer. Live means that the screen is displaying what is being recorded on the DVR.
Download DVRViewer button	Lets you download the DVRViewer application.

**To archive video data to your computer's hard drive:**

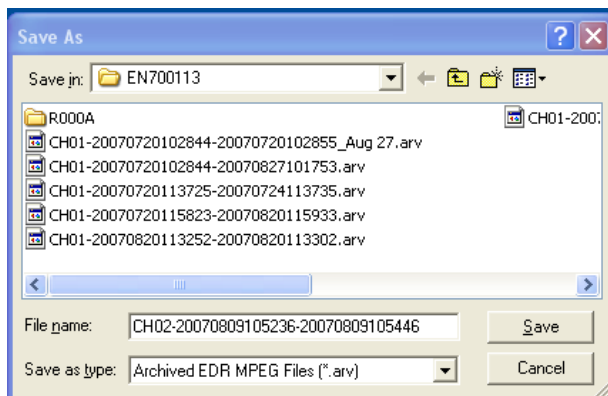
1. Click on the Archive tab to display the Archive window.
2. Select the camera which has the video footage to be archived.
3. Select the archive start time by clicking on the **red arrow** button. See “Searching Video Clips by Time” on page 7 for an explanation of the expanded Date and Time bar.
4. Select the archive end time by clicking on the **red arrow** button.  
The default time displays the same time for Start time and for End time.

---

**Important:** It is important to set the Start time to occur before the End time. One option is set the End time first and then set the Start time.

---

5. Click the **Archive** button.  
The Save As window appears, as shown in Figure 7.



**Figure 7** Save As window

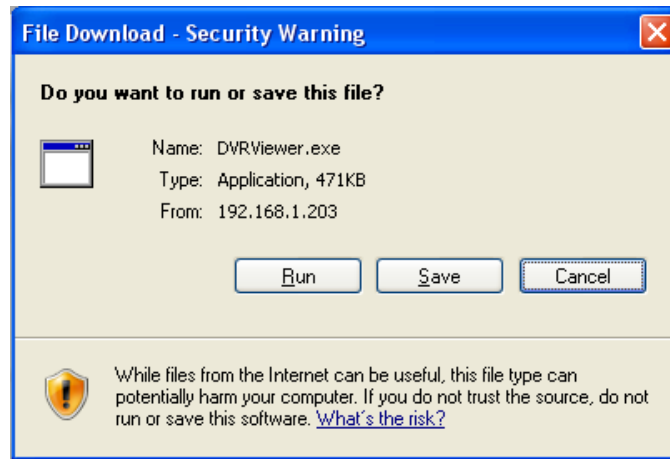
6. In the Save in field, browse to the directory where you wish to save the file.
7. In the File Name field, enter the desired file name.  
In the Save as type field, the file type defaults to the .ARV file format.
8. Click **Save**.  
The status bar displays the message, “Archiving in Lossless Transmission Mode. Archive completed!” A progress bar appears above the status bar.
9. If you click Stop, the status bar displays the message, “Live, Archive Aborted!” A second message, “Live Archive error!” may also appear.  
The archiving process is stopped, and the DVR Remote Viewer returns to Live mode, which displays a view of the video currently being recorded.

**To view the archive .ARV files:**

You can download and use the DVRViewer or Hard Drive (HD) Reader applications to playback the .ARV file. If you're using the HD Reader to view the archive files, see the *HD Reader User's Guide*. If you're using the DVRViewer, follow these instructions.

1. Click the **Download DVRViewer** button.

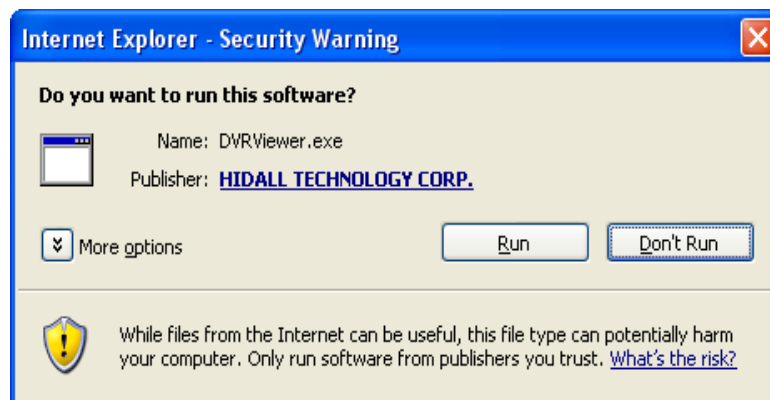
A security warning message appears, asking if you want to run or save this file, as shown in Figure 8. The DVRViewer only needs to be downloaded once.



**Figure 8** File download - security warning message

2. Click **Run** to run the application or save.

An Internet Explorer - Security Warning message appears, asking if you want to run the software, as shown in Figure 9.



**Figure 9** Internet Explorer - Security warning message

3. Click **Run** and the DVRViewer application appears, as shown in Figure 10.



**Figure 10** DVRViewer application

4. Click on **Load File** to upload an archived file with the .ARV file extension from your computer's hard drive.
5. To save an image as a JPEG file or other file, click the **Capture** button to save the image to your computer's hard drive.
6. To save it as a .AVI video format (a common file format for saving video files) click on the **Save to Avi** button.  
An .AVI file can be viewed from any media player on your computer.
7. If you are unable to play the .AVI file, go to <http://www.divx.com> and download the free DivX® Codec.





**Seon Design Inc.**  
**Unit 111, 3B Burbidge Street**  
**Coquitlam, BC**  
**Canada V3K 7B2**

Telephone	604.941.0880
Toll Free Telephone	1.877.630.7366
Fax	604.941.0870
Toll Free Fax	1.866.664.3677
Email	<a href="mailto:sales@seon.com">sales@seon.com</a>
Web site	<a href="http://www.seon.com">www.seon.com</a>