

## Accessing the Camera Using a Web Browser

You can use a Web browser to access and configure the camera over an Ethernet connection. For a direct connection to a single camera:

- Using a Web browser, enter the camera's IP address (*refer to the table below*). The Login dialog box appears.  
**Note: Ensure that the Active X controls are enabled.**
- Enter your user name and password. Default user name is **Admin** and default password is **11111111**.
- Click **Login**. The Web browser window appears.

## Typical IP Addresses

The camera's default static IP address is 172.30.1.1. When connected to the network switch or directly to a recorder, the camera's IP address is assigned based on the device and port:

Connected Device	IP Address Range	Connected Port	IP Address
16-port Network switch (NS18POE16)	172.31.1.101 through 172.31.1.116	<01-16>	Change the last 2 digits based the port number. For example: the address for the camera connected to switch port #8 is: 172.31.1.108
		IPCAM1	172.31.1.141
		IPCAM 2	172.31.1.142
		WIFI	172.31.1.143
NH16 recorder (directly to rear-panel)	172.31.1.141 through 172.31.144	Modem	172.31.1.144
		TH8 recorder (directly to rear panel)	172.31.1.141 and 172.31.142

## Warranty

For full warranty information, visit:

- [www.seon.com/documents/Seon-Warranty.pdf](http://www.seon.com/documents/Seon-Warranty.pdf)

## Support

- Phone: 1.844.899.7366
- Email: [PTsupport@safefleet.net](mailto:PTsupport@safefleet.net)



2002/96/EC (WEEE directive): This product cannot be disposed of as unsorted municipal waste in the European Union. For proper recycling, return the product to your local supplier upon the purchase of equivalent new equipment, or dispose of it at designated collection points, for more information, see [www.recyclethis.info](http://www.recyclethis.info).

2006/66/EC (battery directive): This product does not contain batteries.



# C3W9PD

## Quick Install Guide

For camera models:

C3W9PD03E, C3W9PD03E-G, C3W9PD04E, C3W9PD04E-G

## Package Contents

Check the package and contents for visible damage. If any components are damaged or missing, contact the Seon Service team and request an RMA (Return Material Authorization).

Package contents:

- Camera
- Drill Template
- Torx Security Wrench
- Brush Guard
- Weatherproof cap for RJ45 connector
- Qty 4 - #10, 1" Mounting Screws

## Cable Requirements

It is recommended that camera harnesses be purchased directly from Safe Fleet. All network cabling must be installed according to applicable codes and regulations.

Cable should be CAT5e or CAT6, stranded or solid, 24 AWG or better. Both ends must be terminated with male RJ45 connectors and should conform to TIA/EIA-568-B standards. Spliced cables are not acceptable.

## Installation Environment

When installing your product, consider the following:

- Electrical:** Install electrical wiring carefully. This should be done by qualified service personnel. Always use a proper PoE switch to power the camera.
- Ventilation:** Ensure that the location planned for the installation of the camera is well ventilated.
- Temperature:** Do not operate the camera beyond the specified temperature, humidity, or power source ratings. The operating temperature of the camera is between -40°C and +65°C.
- Servicing:** Do not attempt to repair this camera yourself. Any attempt to dismantle this product, except as required for normal installation, will negate the warranty and may also result in injury. Refer all servicing to qualified service personnel.
- Cleaning:** Do not touch the lens with your fingers. If cleaning is necessary, use a clean soft cloth with isopropyl alcohol and gently wipe the camera.

## Service

If your C3W9PD Camera is to be returned for service, please call toll free 1.877.630.7366, or 1.844.899.7366, and provide the model and/or serial# of your unit.

Ask for a Return Merchandise Authorization (RMA) number. An RMA# allows the Service Technicians to better track your product when it comes in for service. Please show the RMA# on the outside of the package. ANY PRODUCT SENT WITHOUT AN RMA# MAY BE REFUSED.

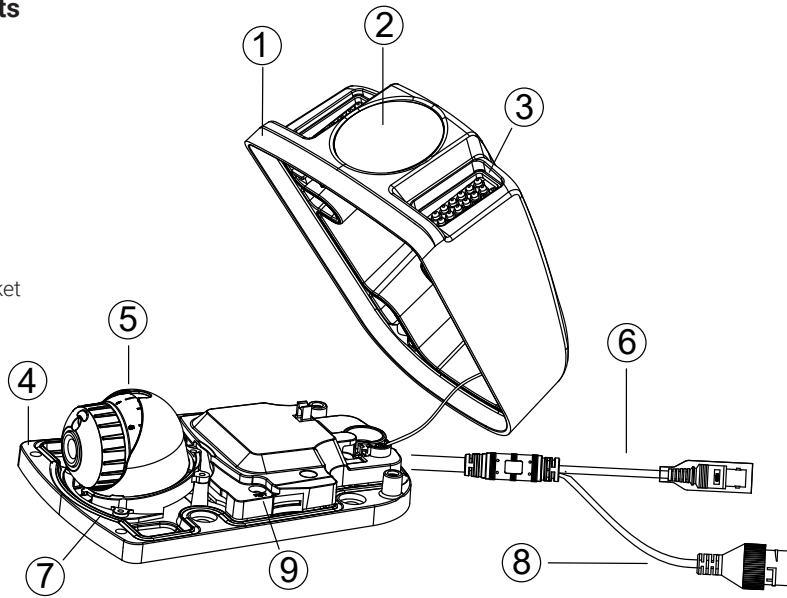
## Documentation

Additional copies of this guide, along with other supporting documentation can be found on the Safe Fleet Community:

- <https://community.safefleet.net>

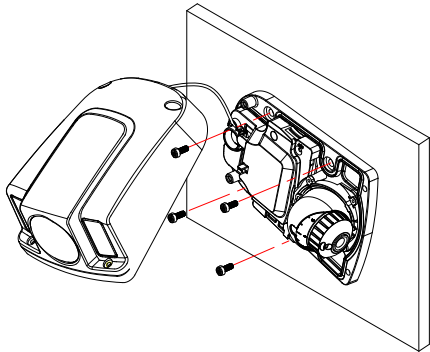
## Camera Components

1. Cover
2. Bubble
3. IR
4. Base
5. Lens
6. BNC cable
7. Camera Sealing Gasket
8. Ethernet RJ45 cable
9. Reset button



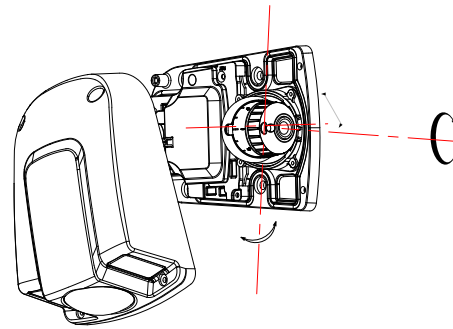
## Mounting the Camera

1. Use the supplied template to mark out the mounting area. Drill the screw holes on the surface.
2. Loosen the cover screws to remove the cover from the camera and fix the mounting base to the surface with the appropriate screws.
3. Loosen the adjusting screw to adjust the pan, tilt, and rotation angle, then re-tighten the screw.
4. Finally, re-install the cover using the cover screws.



**Improper mounting can potentially result in water damage to the camera.** Please see the Warning on the back page of this Guide.

3. Loosen the adjusting screw to adjust the pan, tilt, and rotation angle, then re-tighten the screw.



### Important: Camera Sealing

Keep the camera sealing gasket clear of any debris and/or cables prior to installing the lid to ensure a reliable seal. Also, take care not to damage the gasket during installation.

Do not use sealant or silicone at the camera base or along the seam between the lid and base.

Do not allow paint inside the gasket cavity or the camera housing – mask off the gasket cavity and all inside parts if painting the lid and base separately.

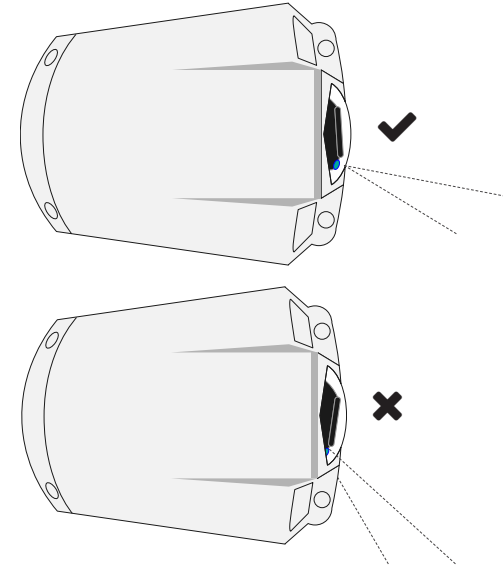
### Important: Positioning the Lens

The ambient light sensor must be pointed downwards (or at the “6:00” position) when positioning the lens. If the sensor is facing up (or at the “12:00” position), then the image will be upside-down.



### Warning: Blocking the Ambient Light Sensor

Take caution when positioning the lens, ensuring that the ambient light sensor is always unobstructed when the camera is fully assembled. An obstructed sensor will prevent the camera from working properly.



### WARNING: Ensure mounting screws do not pinch or obstruct the base plate gasket

The gasket running along the mounting base prevents water from seeping inside the camera, which may damage internal components. To avoid compromising the gasket, install the mounting screws in accordance with the following conditions:

- *Oversized screw heads* – we recommend using the supplied #10, 1” mounting screws. While this suits most installations, different-sized screws may be required for specific vehicles. If you use a different-sized screw, you must ensure the screw head does not contact the base plate gasket.
- *Drilling/screw angle* – when fully-inserted, the screw heads must sit flush with the countersunk holes in the mounting base. Do not drill/thread the mounting screws at an angle or off-center, as this can pinch or obstruct the base plate gasket.

Fold Here