



# TB-100 Bluetooth Transmitter Software Configuration Guide

Revision 1.02



# Table of Contents

<b>Introduction .....</b>	<b>1</b>
<b>Installing the Configuration Tool.....</b>	<b>2</b>
<b>Logging into the Configuration Tool.....</b>	<b>5</b>
<b>Upgrading Firmware .....</b>	<b>6</b>
<b>Enabling/Disabling Bluetooth Transmissions.....</b>	<b>7</b>
<b>Entering a Bluetooth ID.....</b>	<b>10</b>
<b>Enabling/Disabling the ‘Ignore TB-100 Transmissions’ Option.....</b>	<b>13</b>
<b>Downloading Device Logs.....</b>	<b>16</b>
<b>Deleting Device Logs .....</b>	<b>18</b>
<b>Entering Static IPs.....</b>	<b>20</b>
<b>Contact Information.....</b>	<b>22</b>



---

## Introduction

The TB-100 Bluetooth Transmitter is a device that can be added to new and existing Flashback systems (including Flashback2s, Flashback3s, and FlashbackHDs) to enable bi-directional Bluetooth transmission between Flashback system(s) and BWX-100 body worn camera(s). This enables your recording devices to remotely initiate recordings on other devices that are within transmission range. It also enables *other* recording devices to remotely initiate recordings on *your* devices\*.

Your Bluetooth Transmitter includes a software utility called the *MVI Bluetooth Transmitter Configuration Tool* (or “Config Tool” for short). This tool is used to update the Bluetooth Transmitter firmware, select device settings, and enable/ disable various device functions.

If your agency has purchased more than one Bluetooth Transmitter, we recommend that you install the Configuration Tool on a laptop so that you can carry the configurator from vehicle to vehicle. This eliminates the need to install the software in every vehicle.

For more information, see:

- ☐ Installing the Configuration Tool, next page
- ☐ Logging into the Configuration Tool, page 2
- ☐ Upgrading Firmware, page 6
- ☐ Enabling/Disabling Bluetooth Transmissions, page 7
- ☐ Entering a Bluetooth ID, page 10
- ☐ Enabling/Disabling the ‘Ignore TB-100 Transmissions’ Option, page 13
- ☐ Downloading Device Logs, page 16
- ☐ Deleting Device Logs, page 18
- ☐ Viewing Static IPs, page 20
- ☐ Contact Information, page 22.

---

\* Assuming that the *Ignore TB-100 Transmissions* field is set to **Disabled**.

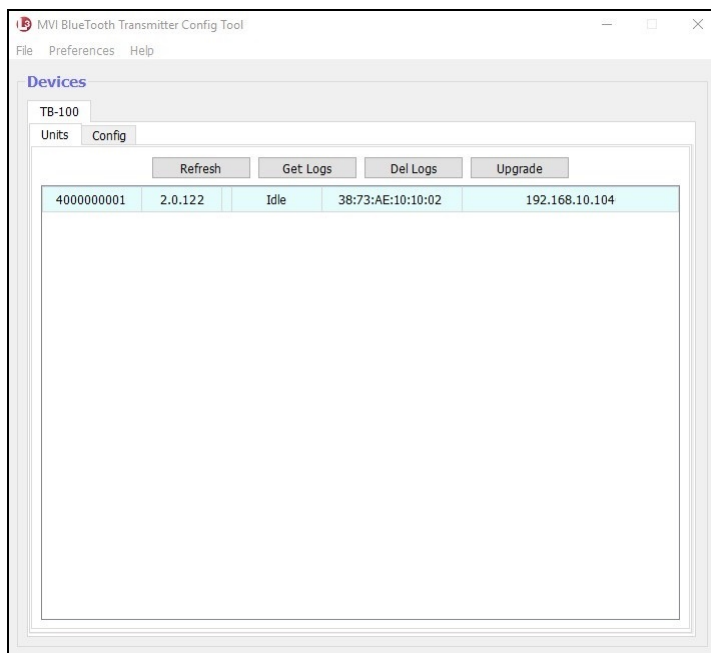
---

## Installing the Configuration Tool

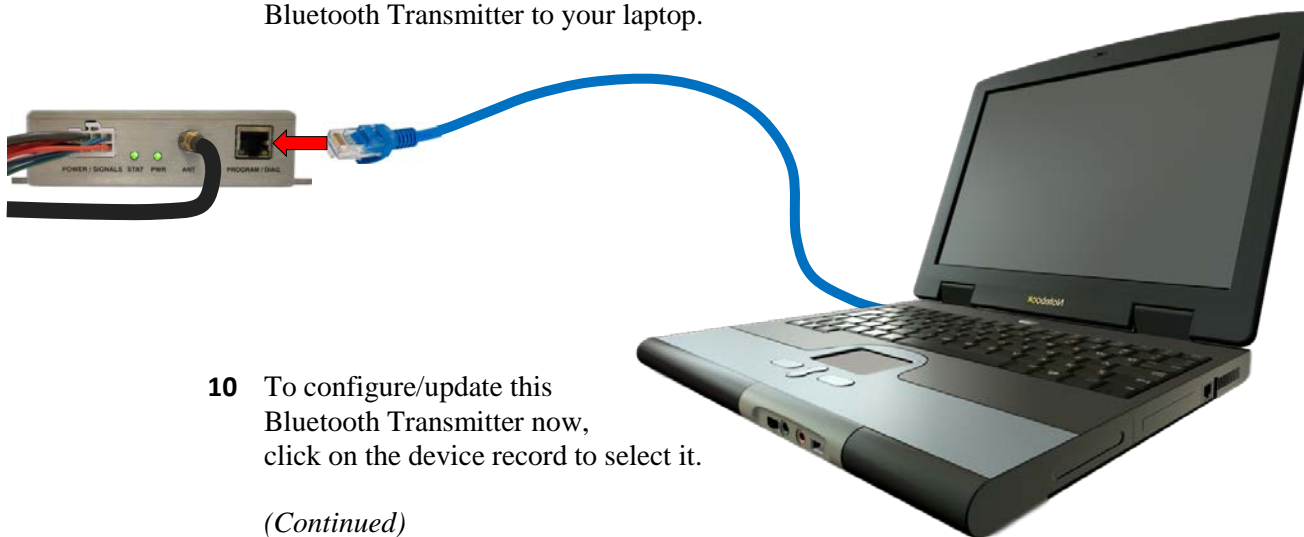
This section describes how to install the Configuration Tool on a laptop PC. We recommend that you install this application on a computer that is configured for DHCP. If your PC is *not* configured for DHCP, you will have to enter static IP address(es) via the *Ethernet* tab, as described on page 20.

- 1 If your laptop has a CD/DVD drive, insert the *Bluetooth Transmitter Configuration Tool* CD in the PC's CD/DVD drive. Skip to step 4.  
– OR –  
If your laptop does *not* have a CD/DVD drive, use another PC to copy the **mvi-BluetoothTransmitter\_[version number].zip** file from the CD to a USB drive.
- 2 Insert the USB drive in a USB port on the laptop.
- 3 Navigate to the USB or CD/DVD drive.
- 4 Copy the **mvi-BluetoothTransmitter\_[version number].zip** file to a directory on the laptop.
- 5 Right-click on the **mvi-BluetoothTransmitter\_[version number].zip** file and select **Extract Here** from the drop-down list.
- 6 Click **Extract** in response to the popup message.
- 7 Double-click on the **mvi-BluetoothTransmitter [version number]** folder to open it.
- 8 Right-click on the **mvi-bluetoothtransmitter.exe** file and select **Run as administrator** from the drop-down list. If any security popups display, click **Yes** or **Allow Access** in response to them.

The Devices screen displays.

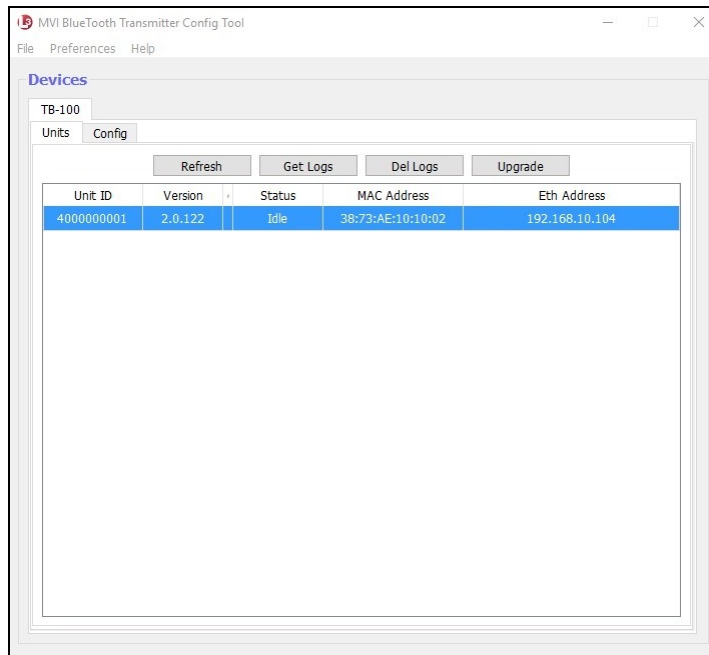


- 9 Using an Ethernet cable (not included), connect the in-car Bluetooth Transmitter to your laptop.



- 10 To configure/update this Bluetooth Transmitter now, click on the device record to select it.

*(Continued)*



The following table describes the factory defaults for your Bluetooth Transmitter.

Setting	Default	Why Change?	How to change...
Bluetooth Transmission	Enabled	If you are <i>not ready</i> for your Bluetooth Transmitter to begin sending and receiving messages yet, temporarily change this field to <b>Disabled</b> .	See “Enabling/Disabling Bluetooth Transmissions” on page 7
Bluetooth ID	1	If you want your Bluetooth Transmitter to communicate only with devices that share the same Bluetooth ID, enter that ID in this field.	See “Entering a Bluetooth ID” on page 10
Ignore TB-100 Transmissions	Yes	If you want your Bluetooth Transmitter to respond to transmissions from other Bluetooth Transmitters, change this field value to <b>No</b> .	See “Enabling/Disabling the ‘Ignore TB-100 Transmissions’ Option” on page 13
Ethernet IPs	Automatically populated via DHCP	If the computer on which you installed the Configuration Tool is <i>not</i> configured for DHCP, you will have to enter static IP addresses.	See “Entering Static IPs” on page 20

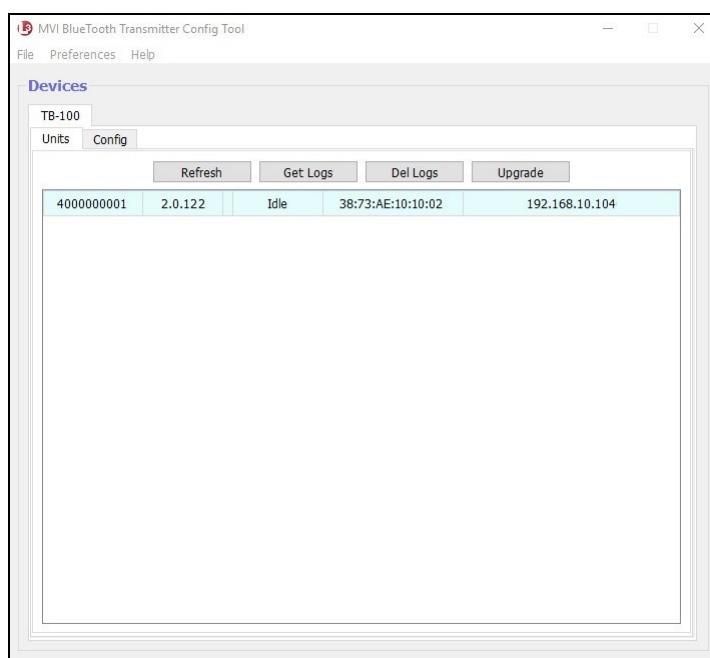
Perform other procedures in this guide on an “as needed” basis, or as directed by your Mobile-Vision Support representative.



## Logging into the Configuration Tool

This section describes how to establish a connection between the software and the Bluetooth Transmitter.

- 1 Using an Ethernet cable, connect the Bluetooth Transmitter to your laptop, as pictured on page 3.
- 2 Login to the laptop.
- 3 Navigate to the disk drive location where the **mvi-bluetoothtransmitter.exe** file is located.
- 4 Double-click on the **mvi-bluetoothtransmitter.exe** file. (If any security popups display, click **Yes** or **Allow Access** in response to them.) The Devices screen displays.



- 5 Click on the device record to select it, as pictured on the previous page.

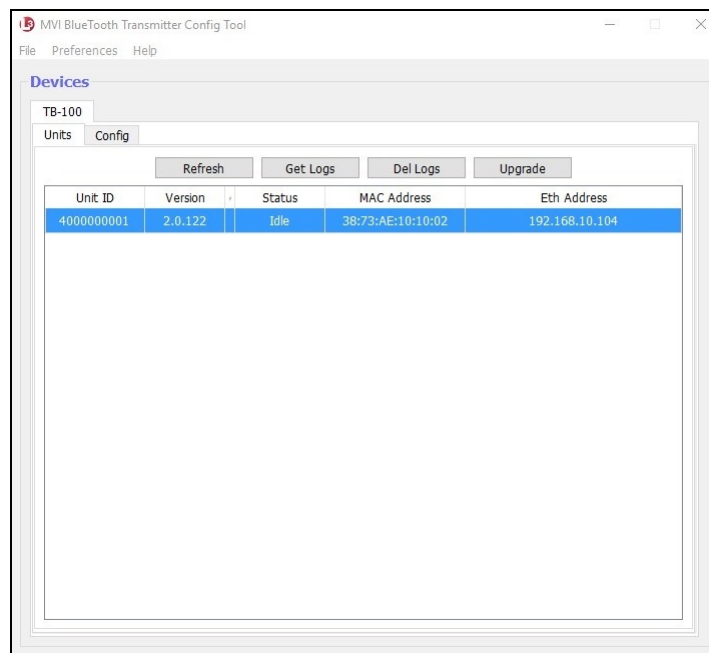
Proceed to the desired topic:

- ☐ Upgrading Firmware, next page
- ☐ Enabling/Disabling Bluetooth Transmissions, page 7
- ☐ Entering a Bluetooth ID, page 10
- ☐ Enabling/Disabling the 'Ignore TB-100 Transmissions' Option, page 13
- ☐ Downloading Device Logs, page 16
- ☐ Deleting Device Logs, page 18
- ☐ Entering Static IPs, page 20.

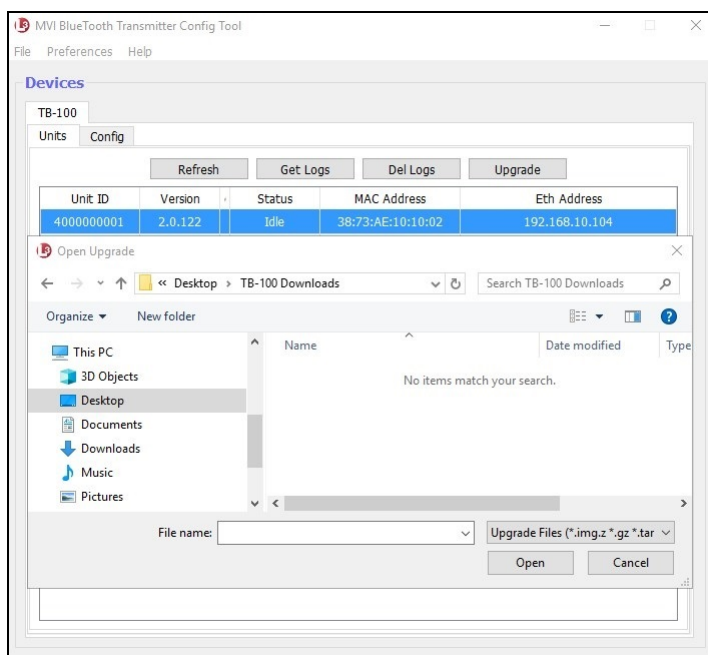
## Upgrading Firmware

This section describes how to upgrade the Bluetooth Transmitter firmware. Perform this task when Mobile-Vision provides you with a new firmware file.

- 1 Copy the firmware file to a directory on the laptop you use to connect to the Bluetooth Transmitter.
- 2 If you have not done so already, connect the Bluetooth Transmitter to your laptop via an Ethernet cable. Next, open the Configuration Tool. (If necessary, review “Logging into the Configuration Tool” on page 5.) The Devices screen displays.
- 3 Click on the device record to select it.



- 4 Click the **Upgrade** button. Windows Explorer displays.



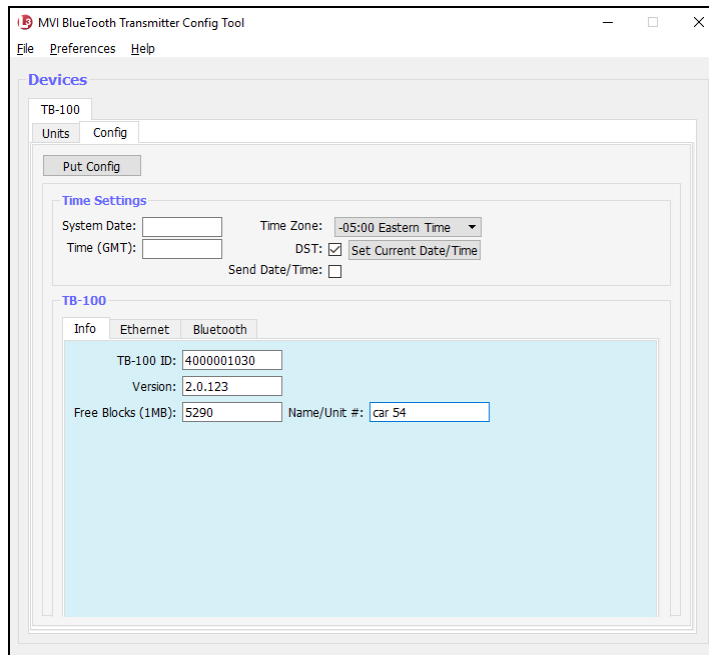
- 5 Navigate to the disk drive location where you placed the firmware file.
- 6 Double-click on the firmware file. If any security popups display, click **Yes** or **Allow Access** in response to them.
- 7 Follow the system prompts to install the firmware.

## Enabling/Disabling Bluetooth Transmissions

This section describes how to turn the Bluetooth transmission feature on or off. By default, Bluetooth transmission is *on*. This will enable your Bluetooth Transmitter to send *record* transmissions to other devices and receive\* *record* transmissions from other devices.

- 1 If you have not done so already, connect the Bluetooth Transmitter to your laptop via an Ethernet cable. Next, open the Configuration Tool. (If necessary, review “Logging into the Configuration Tool” on page 5.) The Devices screen displays.
- 2 Click on the device record to select it, as pictured on the previous page.
- 3 Click the **Config** tab.

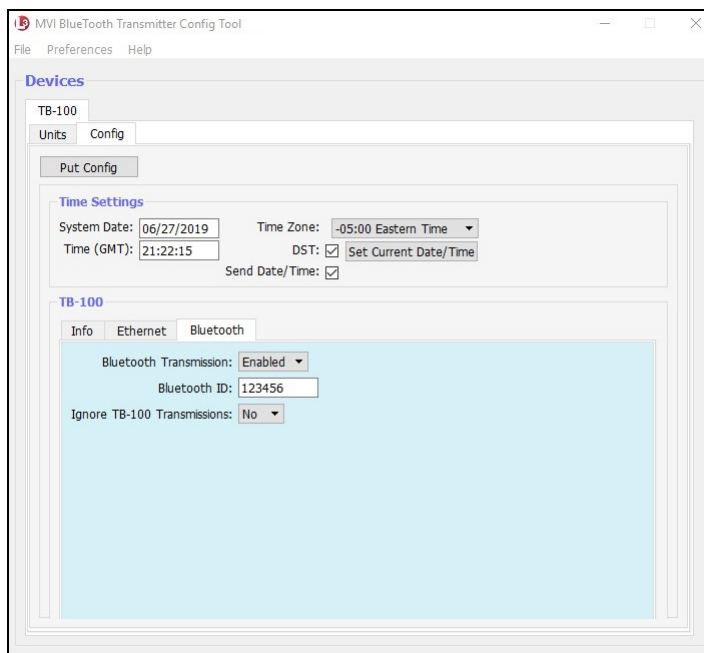
\* Assuming that the *Ignore TB-100 Transmissions* field is set to **Disabled**.



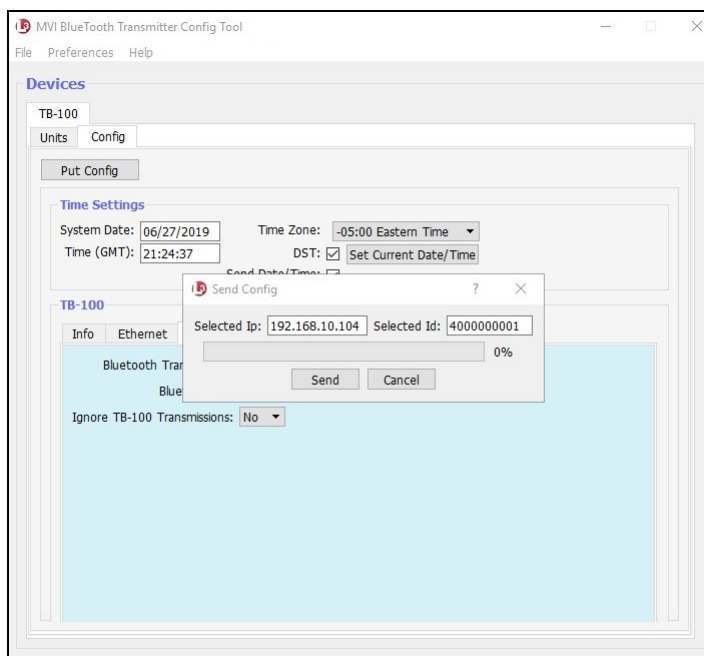
The fields on this tab are described below.

Field	Description
TB-100 ID	The serial number for this Bluetooth Transmitter
Version	The firmware version that is currently assigned to this Bluetooth Transmitter
Free Blocks (1MB)	The amount of space, in megabytes, that remains on this Bluetooth Transmitter's internal SD card
Name/Unit #	The unit name or number that this Bluetooth Transmitter is installed in (i.e., Unit 16). This name will appear on the BWX-100's LCD menu whenever you sync a BWX-100 with your Bluetooth Transmitter. Entering a descriptive name here will make it easier for you to identify your Bluetooth Transmitter on the BWX-100's list of in-range devices. If you leave this field blank, the TB-100's serial number will display on that list instead.

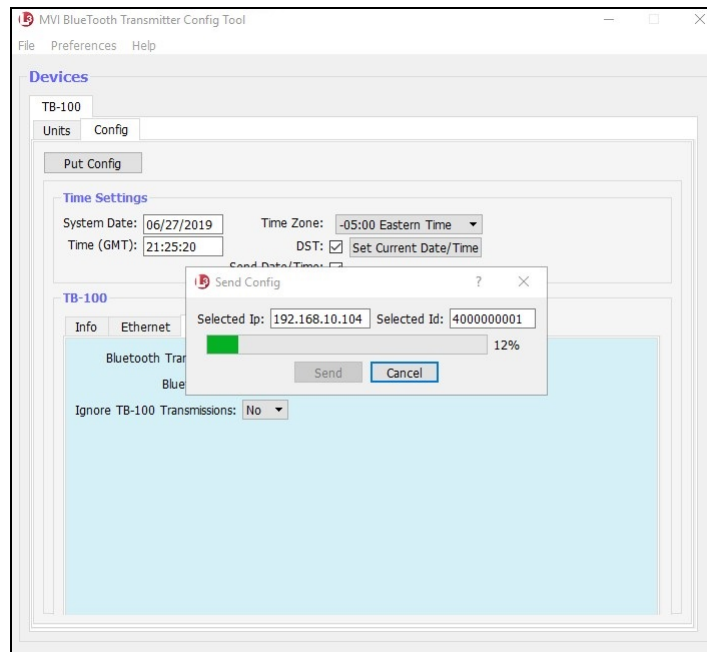
- 4 Click the **Bluetooth** tab in the TB-100 section.



- 5 Select a value from the *Bluetooth Transmission* drop-down list: **Enabled** (activate Bluetooth transmission) or **Disabled** (deactivate Bluetooth transmission).
- 6 Click the **Put Config** button at the top of the screen. The Send Config popup displays.



## 7 Click **Send**.



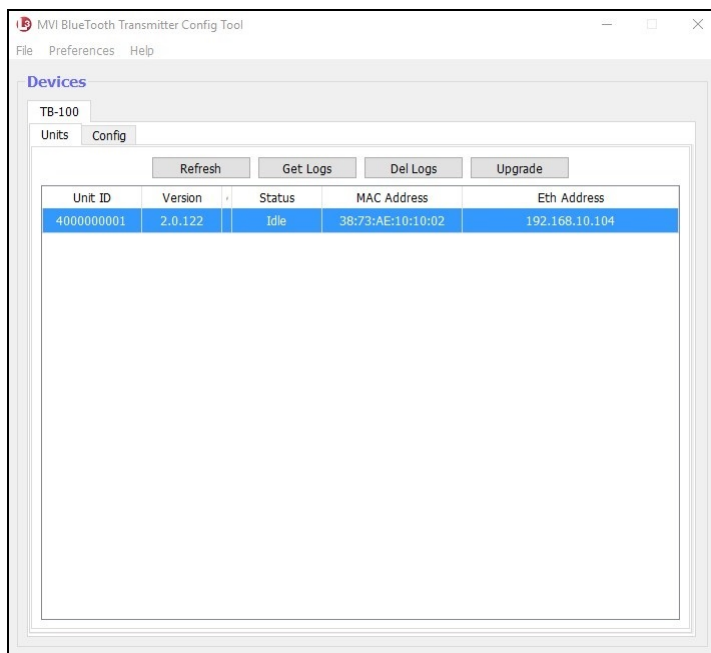
Once the update-in-progress indicator reaches 100%, the popup closes.

## Entering a Bluetooth ID

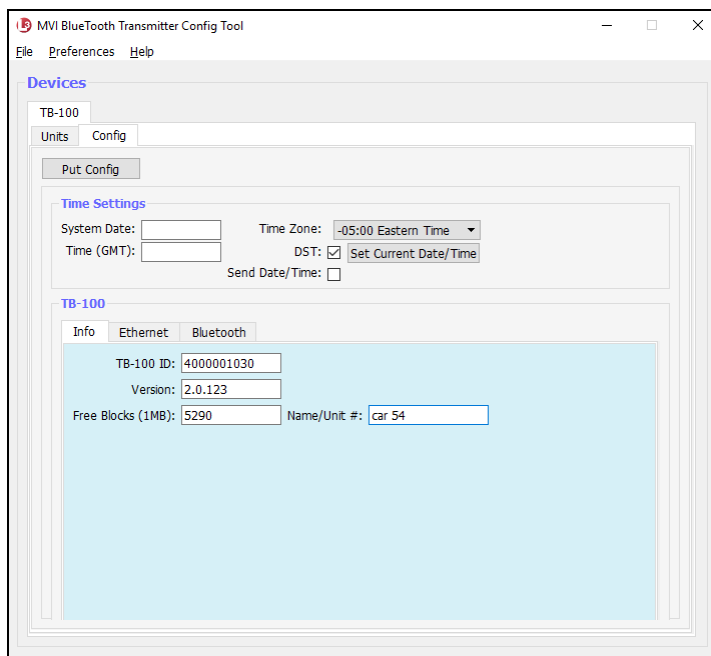
This section describes how to assign a unique Bluetooth ID to the Bluetooth Transmitter. When you do so, your Bluetooth Transmitter will only respond to signals from devices that share the same Bluetooth ID. These may include FlashbackHDs, BWX-100s, and/or Bluetooth Transmitters. (*Note*—The latter will only be included if the *Ignore TB-100 Transmissions* field is set to **No**.)

By default, your Bluetooth Transmitter will accept transmissions from *all* in-range devices, even those outside your agency.

- 1 If you have not done so already, connect the Bluetooth Transmitter to your laptop via an Ethernet cable. Next, open the Configuration Tool. (If necessary, review “Logging into the Configuration Tool” on page 5.) The Devices screen displays.
- 2 Click on the device record to select it.

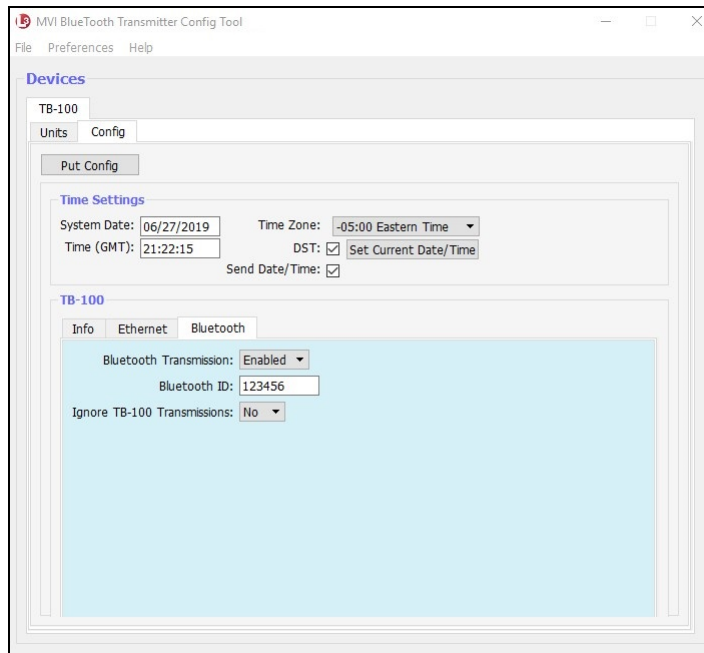


**3 Click the **Config** tab.**

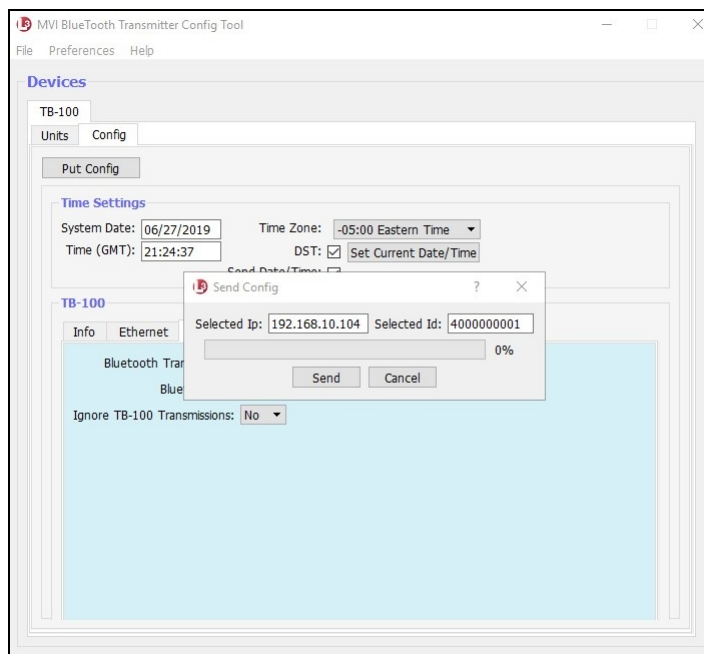


For a description of the fields on this tab, see the table on page 8.

**4 Click the **Bluetooth** tab in the TB-100 section.**

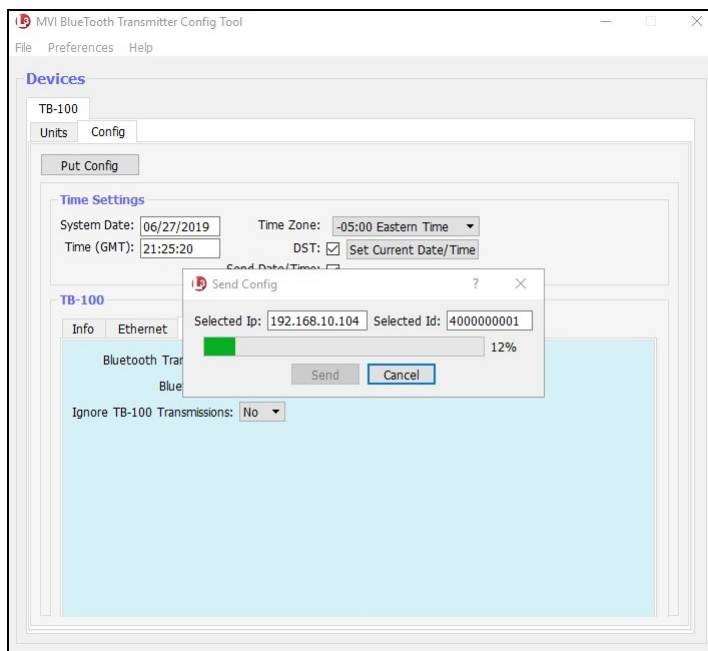


- 5 Proceed to the *Bluetooth ID* field and enter the ID for this Bluetooth Transmitter's sending/receiving group (i.e., the group of devices that are allowed to communicate with each other).
- 6 Click the **Put Config** button at the top of the screen. The Send Config popup displays.



- 7 Click **Send**.





Once the update-in-progress indicator reaches 100%, the popup closes.

## Enabling/Disabling the 'Ignore TB-100 Transmissions' Option

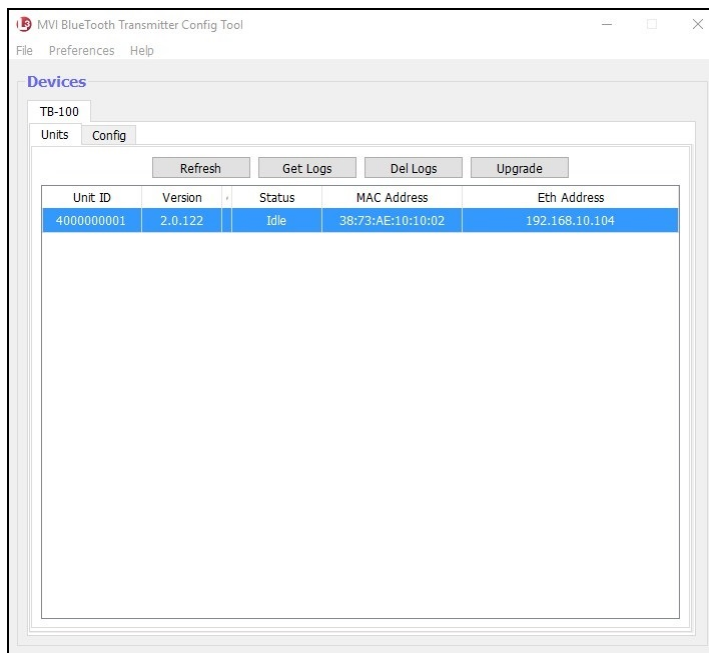
This section describes how to enable/disable the *Ignore TB-100 Transmissions* option. When this option is set to **No** (default), your Bluetooth Transmitter will respond to *record* transmissions from other Transmitters. When this option is set to **Yes**, your Bluetooth Transmitter will *ignore* record transmissions from other Transmitters.

- 1 If you have not done so already, connect the Bluetooth Transmitter to your laptop via an Ethernet cable. Next, open the Configuration Tool. (If necessary, review “Logging into the Configuration Tool” on page 5.)

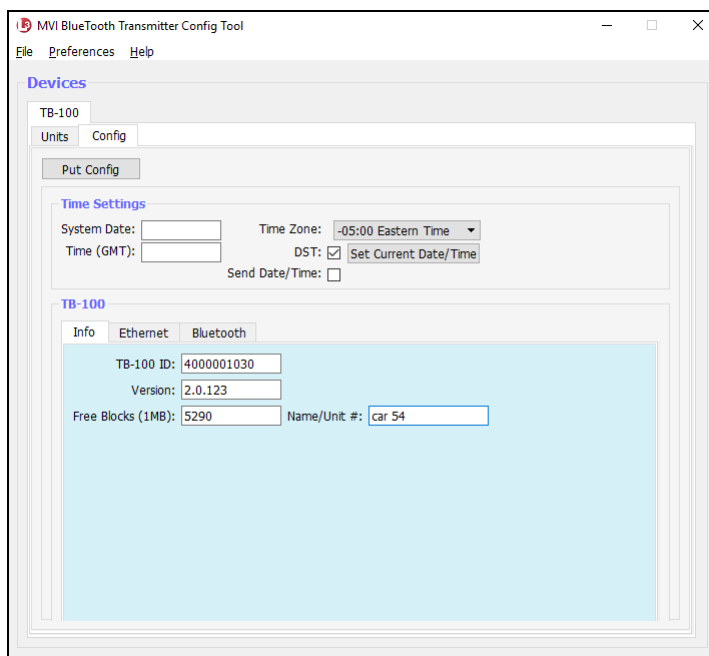
The Devices screen displays.

- 2 Click on the device record to select it.

(Continued)

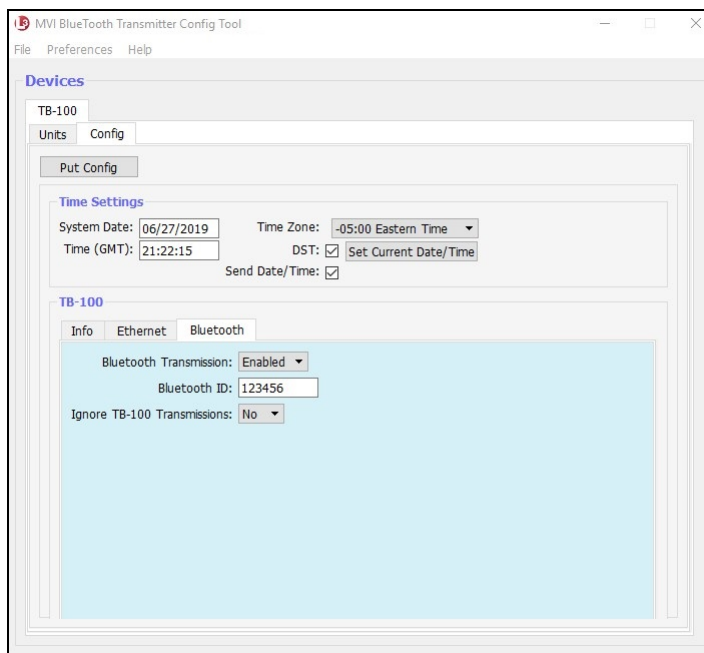


3 Click the **Config** tab.



For a description of the fields on this tab, see the table on page 8.

4 Click the **Bluetooth** tab in the TB-100 section.



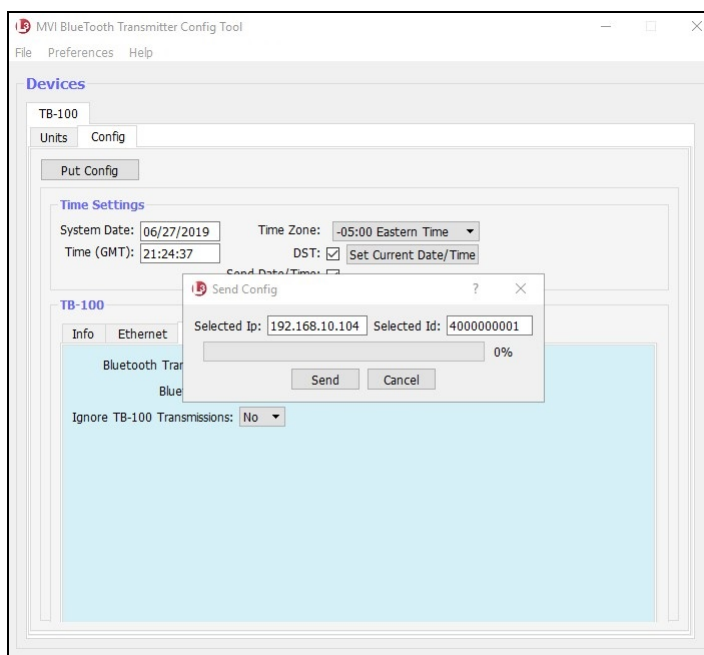
- 5 Proceed to the *Ignore TB-100 Transmissions* field.

If you want your Bluetooth Transmitter to respond to transmissions from other Transmitters (default), select **No** from the drop-down list.

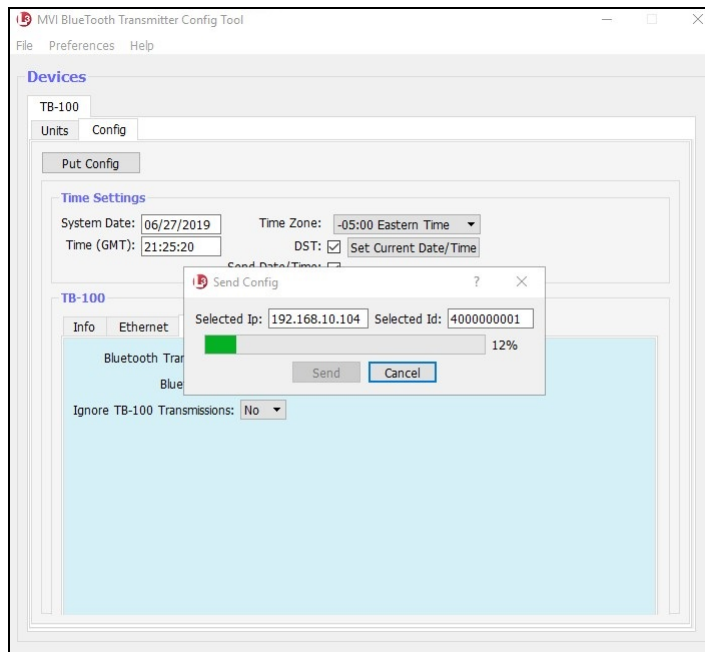
– OR –

If you want your Bluetooth Transmitter to *ignore* transmissions from other Transmitters, select **Yes** from the drop-down list.

- 6 Click the **Put Config** button at the top of the screen. The Send Config popup displays.



## 7 Click **Send**.

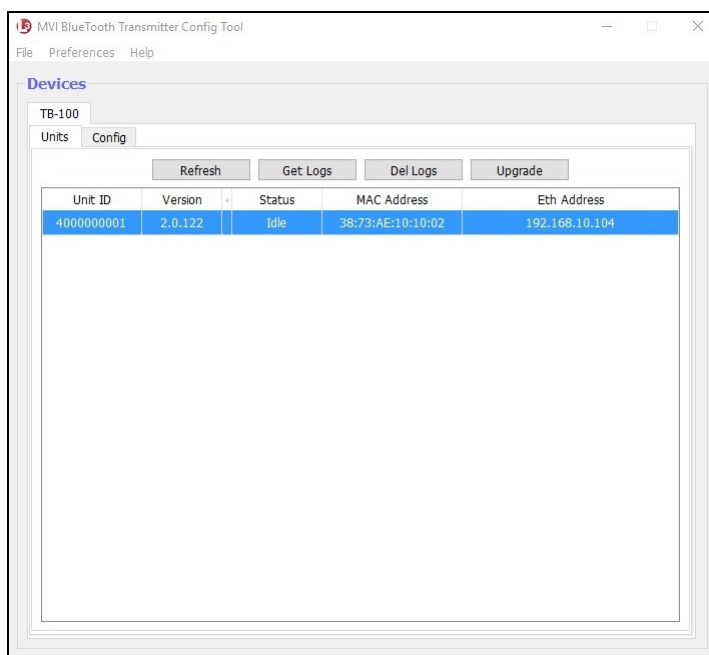


Once the update-in-progress indicator reaches 100%, the popup closes.

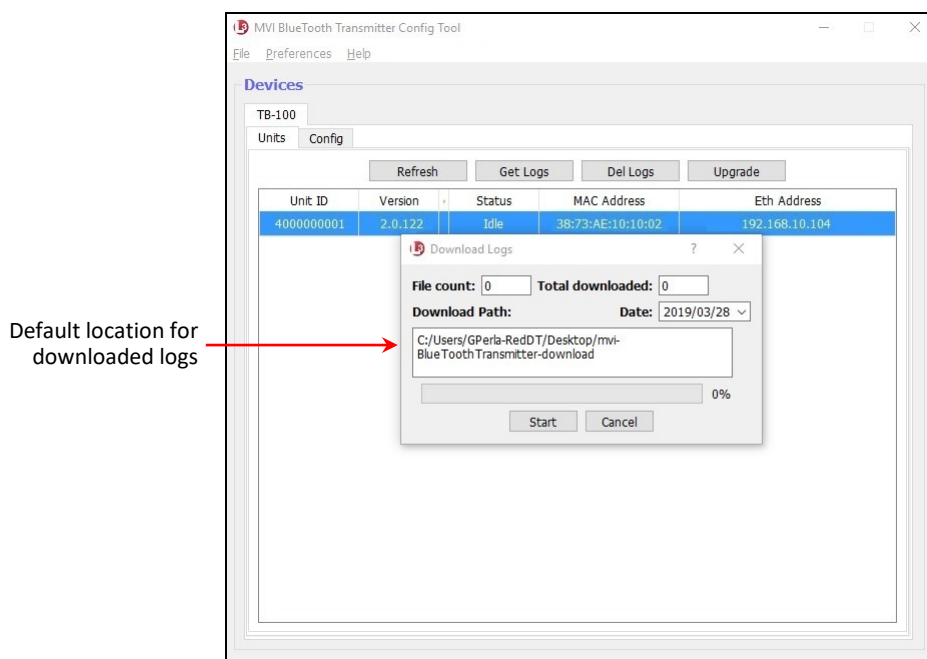
## Downloading Device Logs

This section describes how to download the device logs for your Bluetooth Transmitter. Perform this task when instructed to do so by your Mobile-Vision Support representative.

- 1 If you have not done so already, connect the Bluetooth Transmitter to your laptop via an Ethernet cable. Next, open the Configuration Tool. (If necessary, review “Logging into the Configuration Tool” on page 5.) The Devices screen displays.
- 2 Click on the device record to select it.

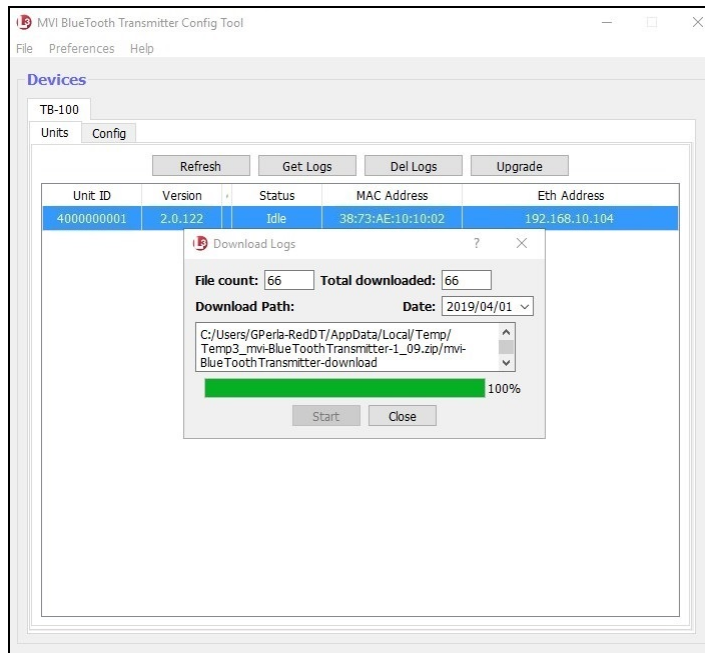


- Click the **Get Logs** button. The Download Logs popup displays.



**HINT:** To remember where the log files are stored, you may want to write down this directory path or take a screen capture of the popup. Alternately, you can change the directory location to your desktop. (See *Preferences* menu at top of page.)

- Click **Start**. The system copies the log files to the location listed in the *Download Path* box.

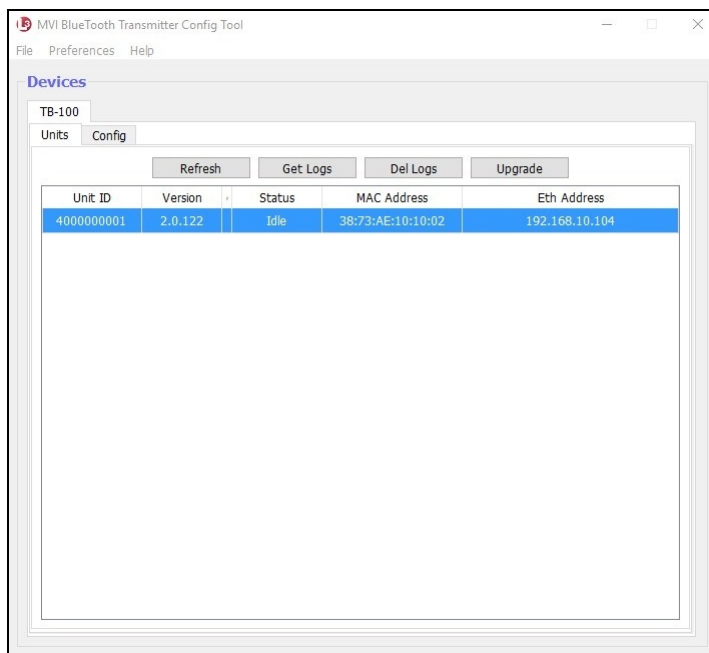


- 5 When the download-in-progress indicator reaches 100%, click **Close**.
- 6 Navigate to the disc drive location where the log files were copied.
- 7 Forward the Device Log files to your Mobile-Vision Support representative, as per their instructions.

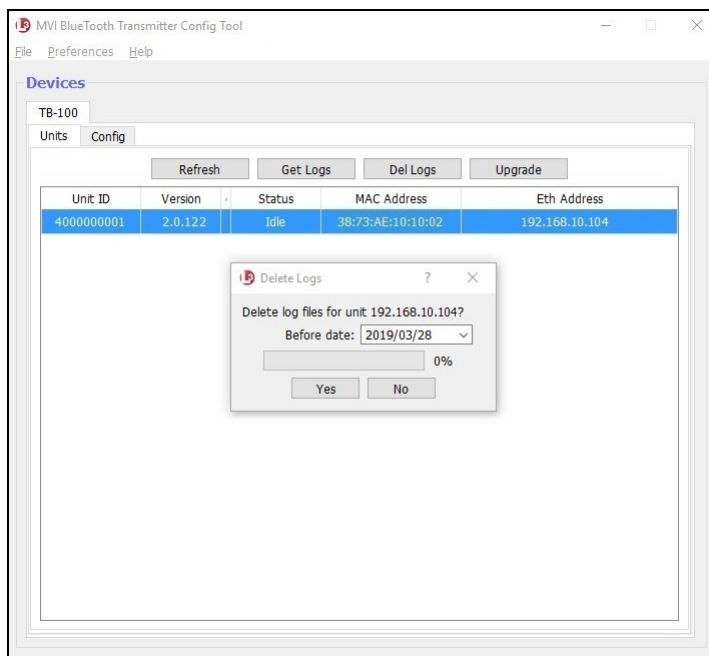
## Deleting Device Logs

This section describes how to delete all device logs prior to a selected date.

- 1 If you have not done so already, connect the Bluetooth Transmitter to your laptop via an Ethernet cable. Next, open the Configuration Tool. (If necessary, review “Logging into the Configuration Tool” on page 5.) The Devices screen displays.
- 2 Click on the device record to select it.



- 3 Click the **Del Logs** button. A confirmation message displays.



(Continued)

- 4 If you wish to delete all log files generated prior to today's date (default), proceed to the next step.  
– OR –  
If you want to delete all log files generated prior to a *different* date, select that date from the *Before date* drop-down list.
- 5 Click **Yes**.

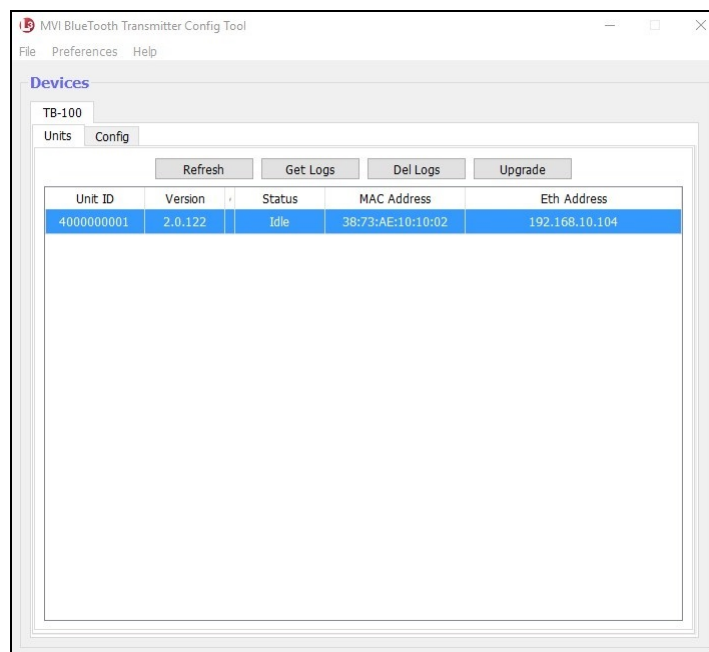
---

## Entering Static IPs

This section describes how to view the static IP address(es) for the Ethernet connection you're using to communicate with the Bluetooth Transmitter. We recommend that you install the Configuration Tool on a PC that is configured for *DHCP* (default). However, in the event that you've installed the Configuration Tool on a PC that is *not* configured for DHCP, you will have to enter static IP address(es), as described here.

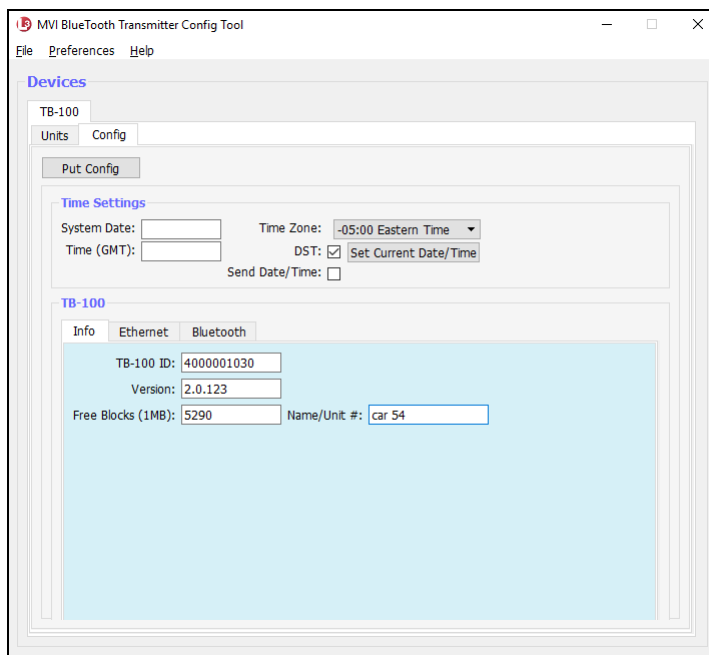
For assistance with this task, please contact your agency's network administrator or Mobile-Vision Support professional.

- 1 If you have not done so already, connect the Bluetooth Transmitter to your laptop via an Ethernet cable. Next, open the Configuration Tool. (If necessary, review "Logging into the Configuration Tool" on page 5.) The Devices screen displays.
- 2 Click on the device record to select it.



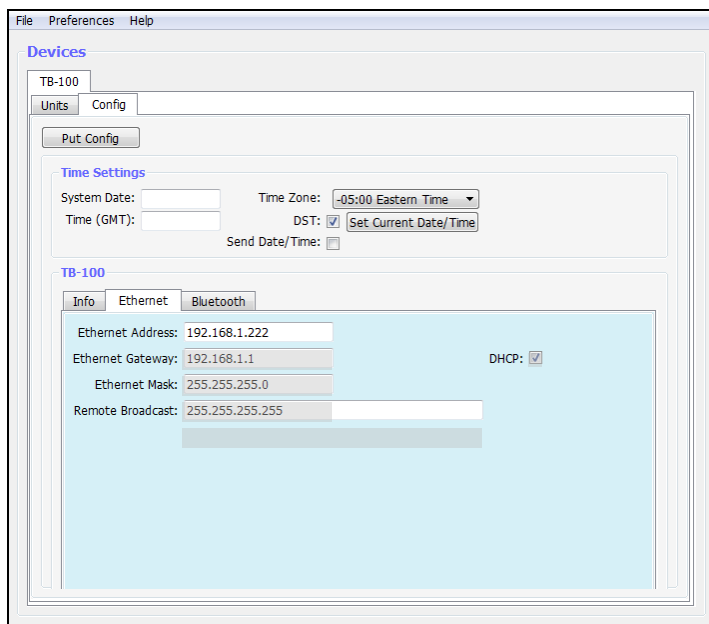
- 3 Click the **Config** tab.





For a description of the fields on this tab, see the table on page 8.

- 4 Click the **Ethernet** tab in the TB-100 section.

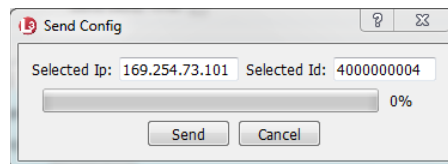


- 5 Deselect the *DHCP* checkbox.

6 Enter the appropriate IP address(es) in the following field(s):

- ☐ Ethernet Address
- ☐ Ethernet Gateway
- ☐ Ethernet Mask
- ☐ Remote Broadcast

7 Click the **Put Config** button. The Send Config popup displays.



8 Click **Send**. Once the update-in-progress indicator reaches 100%, the popup closes.

---

## Contact Information

**Phone:** 800-336-8475

**Email:** [servicedepartment.mvi@safefleet.net](mailto:servicedepartment.mvi@safefleet.net)

**Address:** Safe Fleet Mobile-Vision  
400 Commons Way, Suite F  
Rockaway, NJ 07866