

Basic Viewer HD Mobile User's Guide

version 3.0.x



Mobile-Vision, Inc.

© Copyright 2015

L-3 Mobile-Vision ■ 400 Commons Way, Suite F ■ Boonton, NJ 07866

Table of Contents

Introduction	1
Getting Started with Basic Viewer.....	1
Installing Basic Viewer HD Mobile	1
Entering Your DVR's IP Address	3
Maintaining Video Storage Locations	4
Adding a Storage Location	4
Changing the Storage Location.....	5
Deleting a Storage Location	6
Generating a DVR Login Key	6
Video Topics.....	8
Searching for a Video	8
Downloading Videos to Basic Viewer	10
Playing a Video	11
Displaying a Video's Storage Location.....	16
Exporting Videos.....	18
Converting Videos to MP4 Format	21
Changing the Speed Display Mode	24
Displaying the Logs Directory.....	25
Burning DVDs.....	26
Contact Information.....	26
Index	27

Introduction

Basic Viewer is a PC-based video file management system. It is the companion software for Flashback, an in-car digital video recorder sold by L-3 Mobile-Vision. Basic Viewer allows you to view the Flashback video files recorded by your in-car camera. You can also export videos and use your PC's DVD burner to create backup discs.

For additional information on your Flashback DVR, refer to that DVR's User Guide, which is available for download from our Online Support Center. To download a list of product documentation, copy the following URL into your browser.

s6.parature.com/FileManagement/Download/897fb523d5f74e4683825050125dda6f

For more information, see:

- Getting Started with Basic Viewer, below
- Video Topics, page 8
- Displaying the Logs Directory, page 25
- Burning DVDs, page 26
- Contact Information, page 26.

Getting Started with Basic Viewer

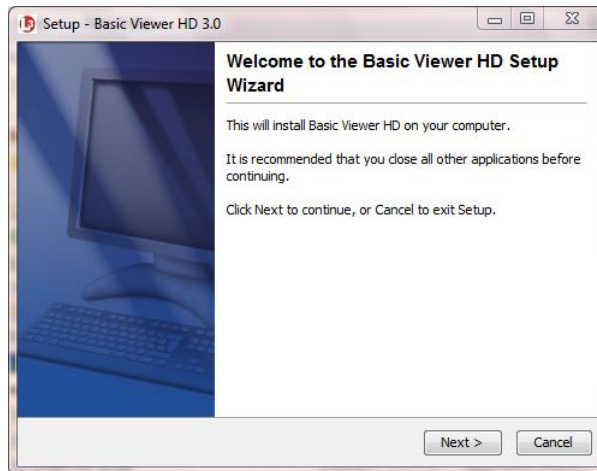
This section describes how to install and configure Basic Viewer. For more information, see:

- Installing Basic Viewer HD Mobile, below
- Entering Your DVR's IP Address, page 3
- Maintaining Video Storage Locations, page 4
- Generating a DVR Login Key, page 6.

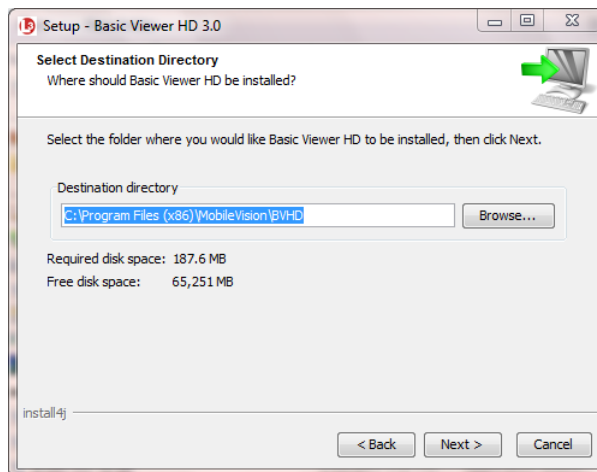
Installing Basic Viewer HD Mobile

This section describes how to install Basic Viewer HD Mobile on your mobile data computer.

- 1 Insert the installation disc provided by L-3 Mobile-Vision in your PC's CD/DVD drive. If the installation program launches automatically, skip to step 3. Otherwise proceed to the next step.
- 2 Navigate to your CD/DVD drive, then double-click on the **L3** icon. The Setup screen displays, as pictured on the next page.



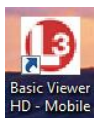
3 Click **Next**.

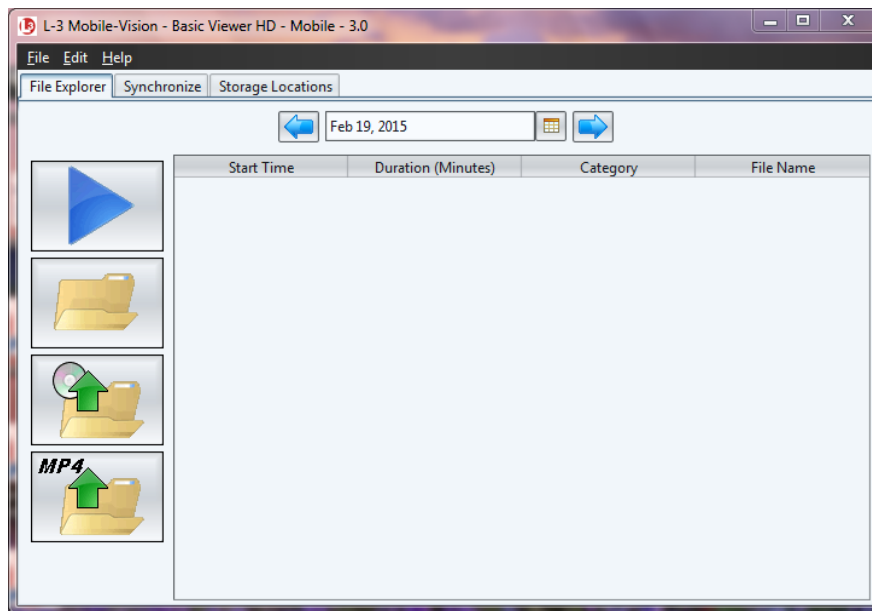


4 Click **Next** again.

5 When the installation is complete, click **Finish**.

6 Go to your PC's desktop and double-click on the **Basic Viewer HD - Mobile** icon. The program launches.





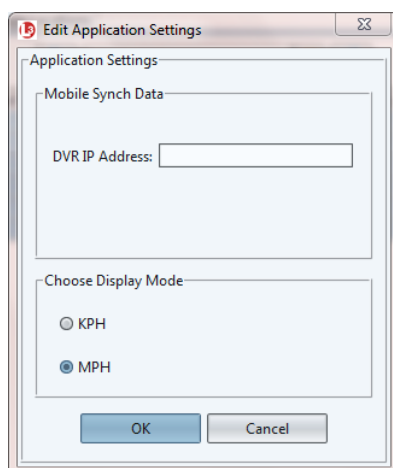
Before you begin using Basic Viewer, you need to perform the following tasks:

- Enter your DVR's IP address, as described below.
- Add at least one storage location for your videos, as described in "Adding a Storage Location" on the next page.

Entering Your DVR's IP Address

This section describes how to enter your DVR's IP address, which enables Basic Viewer to communicate with that device.

- 1 Go to the menubar at the top of the page and select **Edit** → **Application Settings**. The Edit Application Settings screen displays.



- 2 Enter your DVR's IP address in the *DVR IP Address* field. If you're not sure what this number is, see steps 1 – 5 of “Entering/Changing the Ethernet IP” in your Flashback User's Guide, available for download from our Online Support Center.*
- 3 Click **OK**. The system attempts to “ping” (locate) the DVR. If there are any connectivity problems, you will receive an error message.

Maintaining Video Storage Locations

This section describes how to add, change, and/or delete video storage locations. Storage locations are the subdirectories on your PC or agency server where you choose to store videos. Basic Viewer can only use one storage location at a time. However, if desired, you can create multiple storage locations to rotate between.

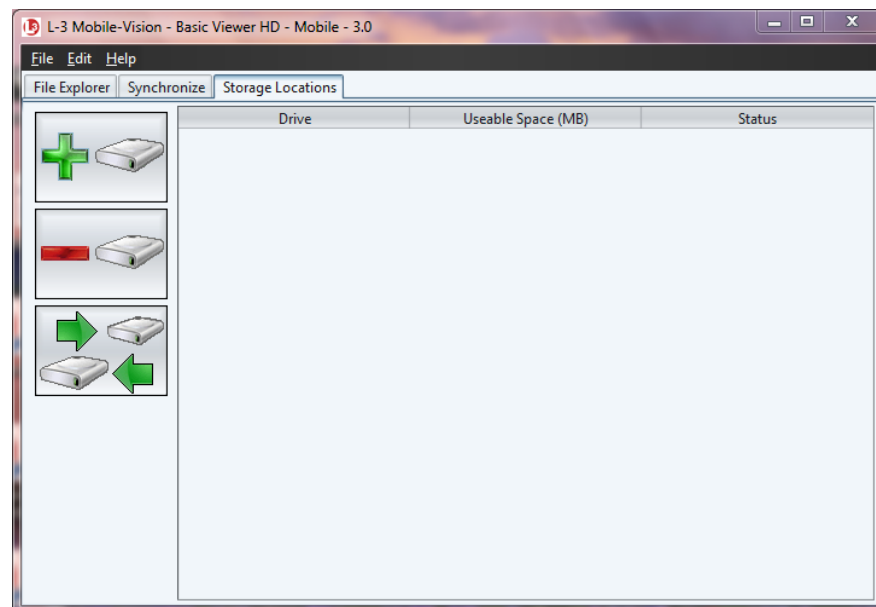
For more information, see:

- Adding a Storage Location, below
- Changing the Storage Location, next page
- Deleting a Storage Location, page 6.

Adding a Storage Location

This section describes how to add a new storage location. For more on storage locations, see the previous section.

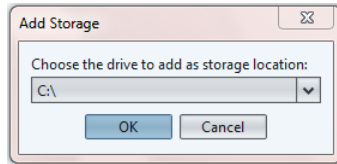
- 1 Click the **Storage Locations** tab.



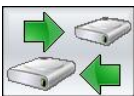
* To download a list of product documentation, copy the following URL into your browser:
s6.parature.com/FileManagement/Download/897fb523d5f74e4683825050125dda6f



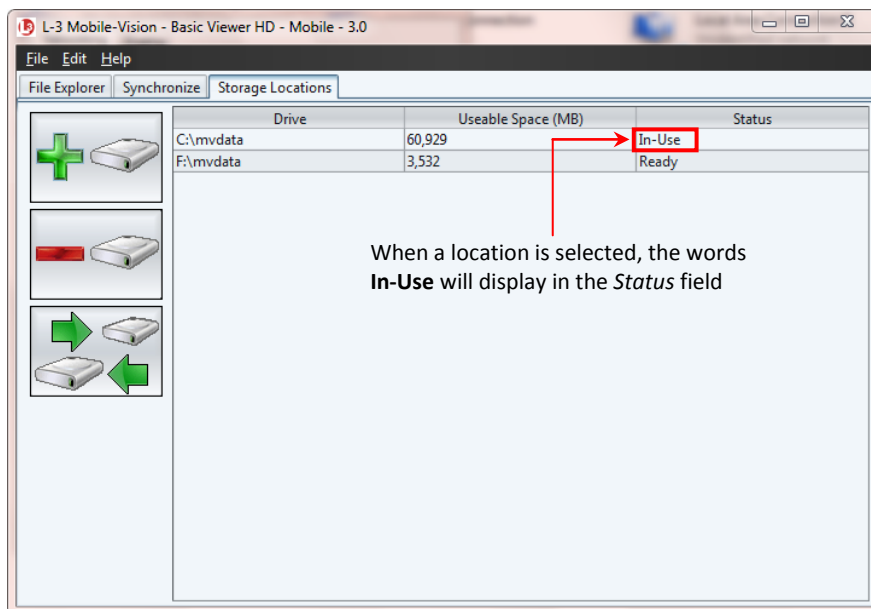
- 2 Click the “add” icon. The Add Storage popup displays.



- 3 Select a disk drive location from the drop-down list.
- 4 Click **OK**. The new disk drive is added to your list.
- 5 To add additional storage locations, repeat steps 2 – 4.



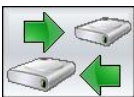
- 6 If you have more than one storage location defined, make sure that the correct storage location is selected. If necessary, use the “rotate” icon to select the desired location.



Changing the Storage Location

This section describes how to change the current storage location where you store your videos. If your agency has not defined any storage locations yet, see “Adding a Storage Location” on the previous page instead.

- 1 Click the **Storage Locations** tab, as pictured above.

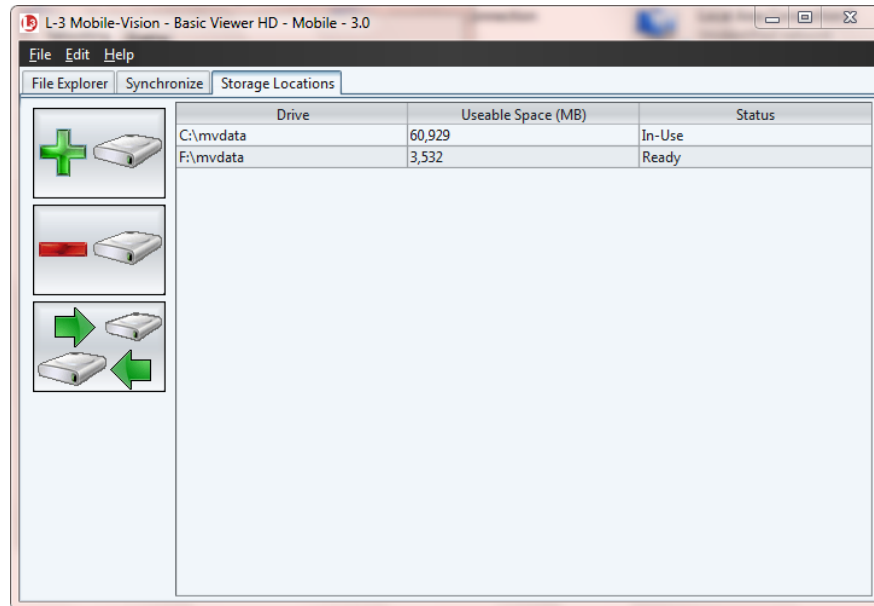


- 2 Use the “rotate” icon to select the new storage location you wish to use. When a location is selected, the words **In-Use** will display in the *Status* column.

Deleting a Storage Location

This section describes how to delete an existing storage location.

- 1 Click the **Storage Locations** tab.



- 2 Click on the location you wish to delete.



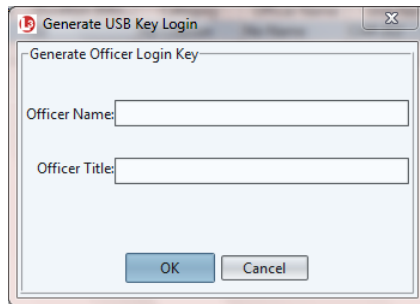
- 3 Click the “delete” icon. The selected record is removed from the Storage Locations list.

Generating a DVR Login Key

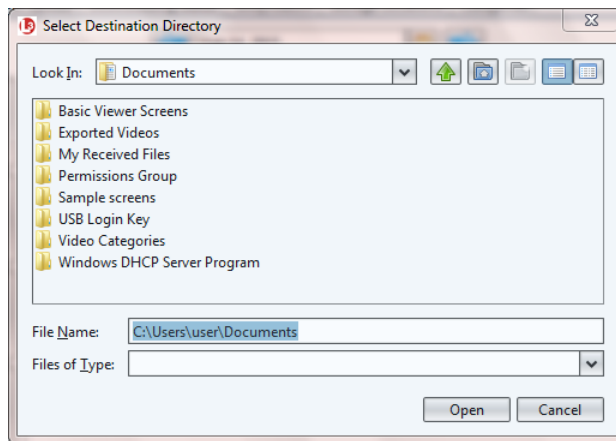
When more than one officer uses the same patrol car, you need a way to identify yourself to the DVR at the beginning of each shift so that your videos will be linked to you. That is what the DVR Login Key is used for. It is simply a file that contains your user information. You copy this file from Basic Viewer to a USB flash drive, then insert the flash drive in your Flashback USB port at the beginning of each shift.

You typically need to perform this procedure only *once* at system startup.

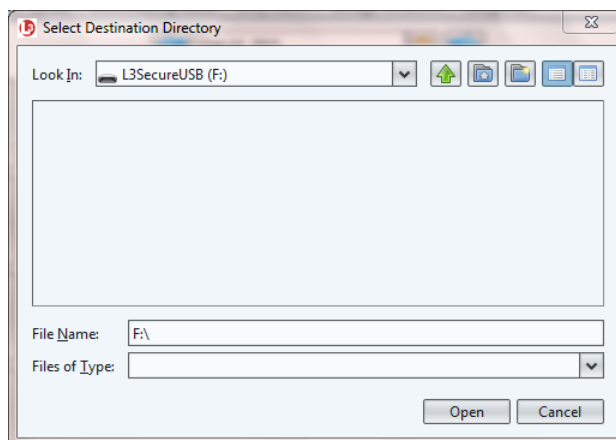
- 1 Insert a USB stick in one of your PC’s USB ports.
- 2 Go to the menubar at the top of the page and select **Edit** → **Create USB Login Key**. The Generate USB Key Login popup displays.




- 3 Enter your name in the *Officer Name* field. This is the name that will display in the upper right corner of all your videos.
- 4 Enter your title in the *Officer Title* field (*Officer, Lieutenant, Sergeant, etc.*)
- 5 Click **OK**. The Select Destination Directory popup displays.



- 6 Navigate to your USB drive.



- 7 Click **Open**. The system copies the login file (userid.dat) to your USB drive.
- 8 Click the  in the upper right corner of the Windows screen to close it.

To login to a Flashback DVR, place the USB drive in the DVR's USB port. Next, press the following buttons on your Flashback monitor:



For more information, see “Logging into a DVR Using Your USB Login Key” in your Flashback User's Guide.

Video Topics

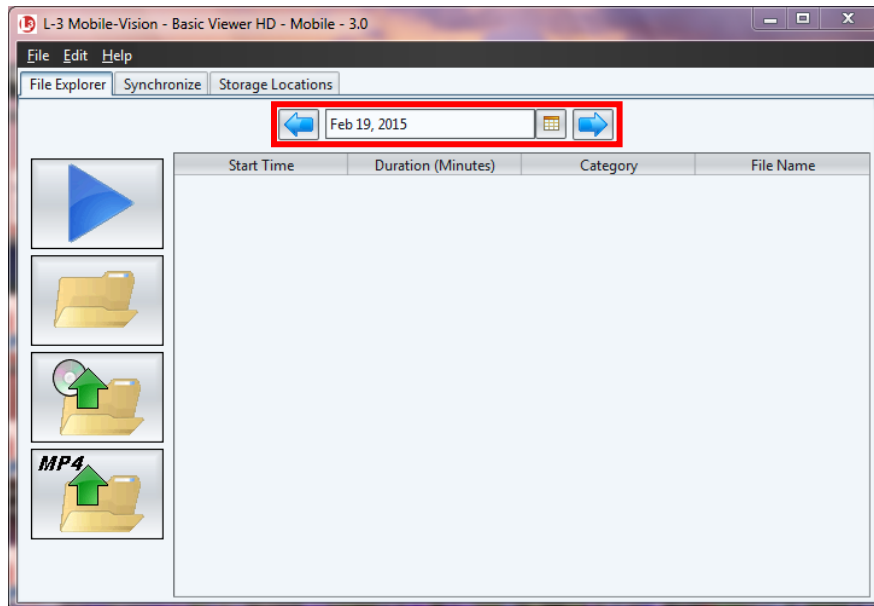
This section describes how to manage videos in Basic Viewer. Topics include:

- Searching for a Video, below
- Downloading Videos to Basic Viewer, page 10
- Playing a Video, page 11
- Displaying a Video's Storage Location, page 16
- Exporting Videos, page 18
- Converting Videos to MP4 Format, page 21
- Changing the Speed Display Mode, page 24.

Searching for a Video

This section describes how to search for and display a video. This is the first step in playing, exporting, or converting a video.

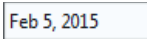
- 1 Make sure the **File Explorer** tab is selected.



- 2 Go to the date field at the top of the screen and enter or select the date on which the video recording was initiated (i.e., the video's *start date*). To do so, use one of three data entry methods: *(Continued)*



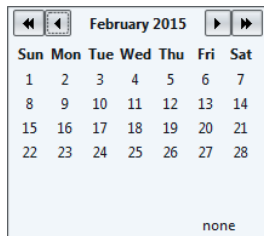
Click the left and right arrow icons to move back or forward one day at a time, respectively.



Type over the displayed date, then press **Enter**.



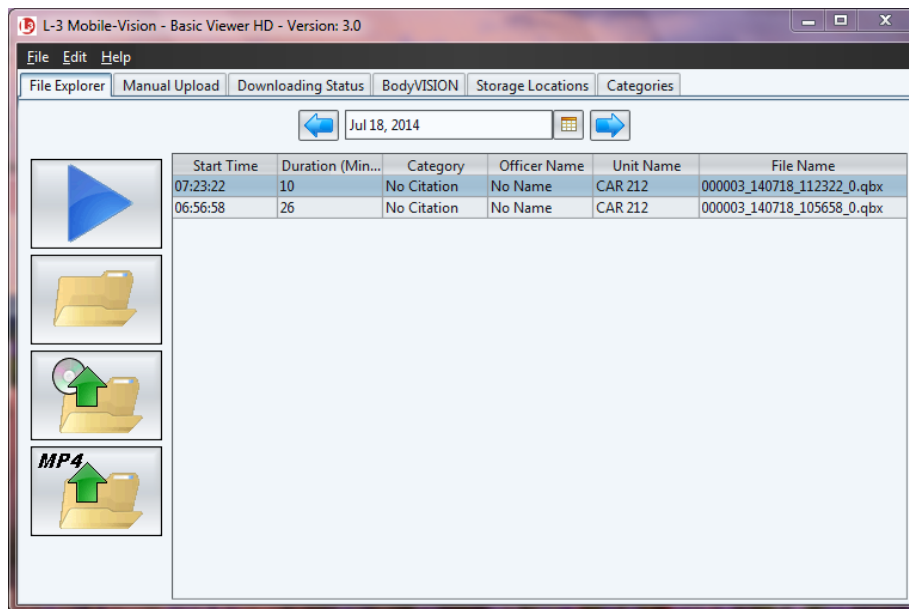
Click the date icon to display a calendar popup.



If the desired month displays, go ahead and click on the date you wish to select. If the desired month does *not* display, first use the arrow icons at the top of the calendar to move forward or backward through the months and/or years, as described below.

Arrow	Description
	Scroll backward one year at a time
	Scroll backward one month at a time
	Scroll forward one month at a time
	Scroll forward one year at a time

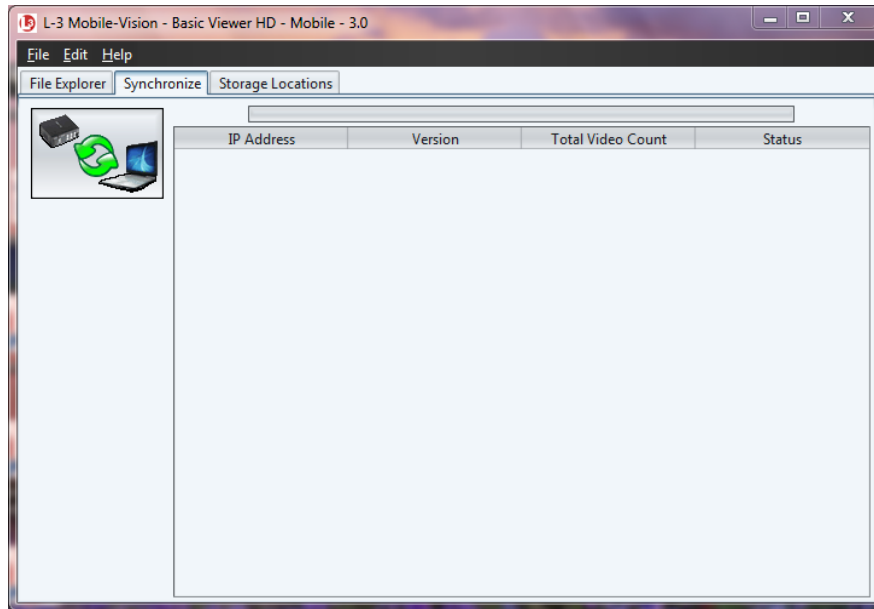
After you enter or select the appropriate date, all videos that began recording on that date will display.



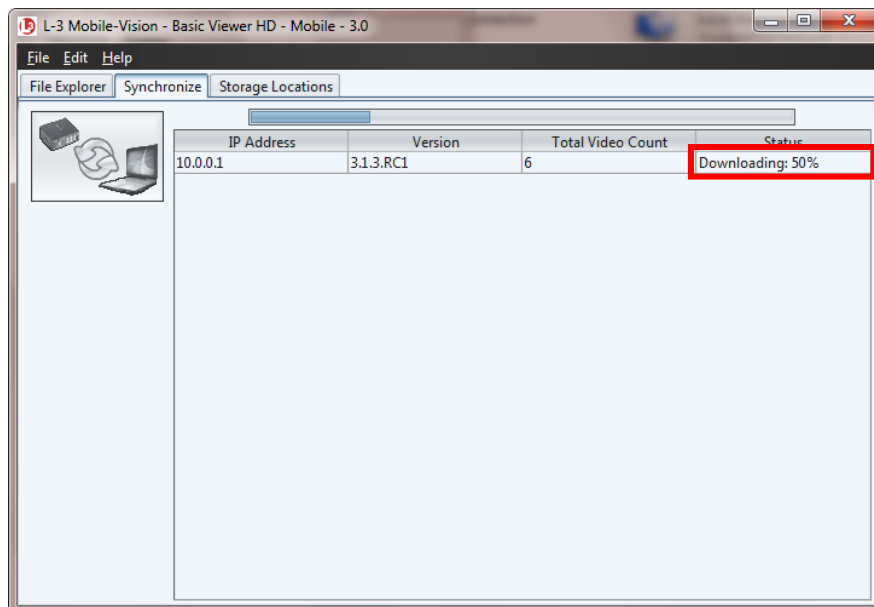
Downloading Videos to Basic Viewer

This section describes how to download (i.e., transmit) videos from your in-car DVR to Basic Viewer. To do so, you have to synchronize Basic Viewer with your DVR. Once the DVR and software are in synch, any video that is on the DVR will automatically download to Basic Viewer.

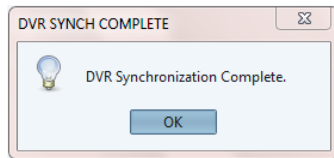
- 1 Click the **Synchronize** tab.



- 2 Click the "Synchronize" button. The system synchs up with your DVR, then begins downloading videos to Basic Viewer. You can monitor the progress of the download by viewing the percentage indicator in the *Status* column.



When the download is complete, the following message displays:

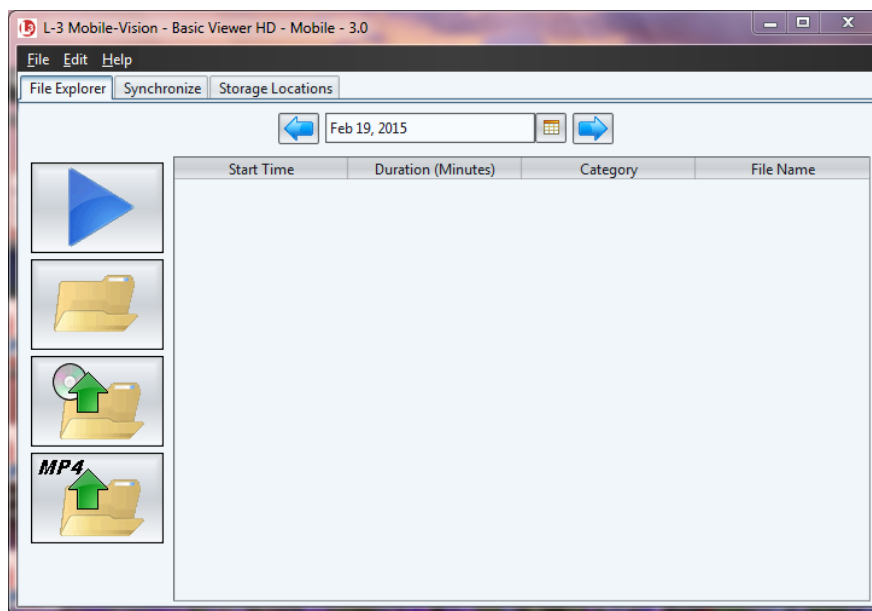


- 3 Click **OK**.

Playing a Video

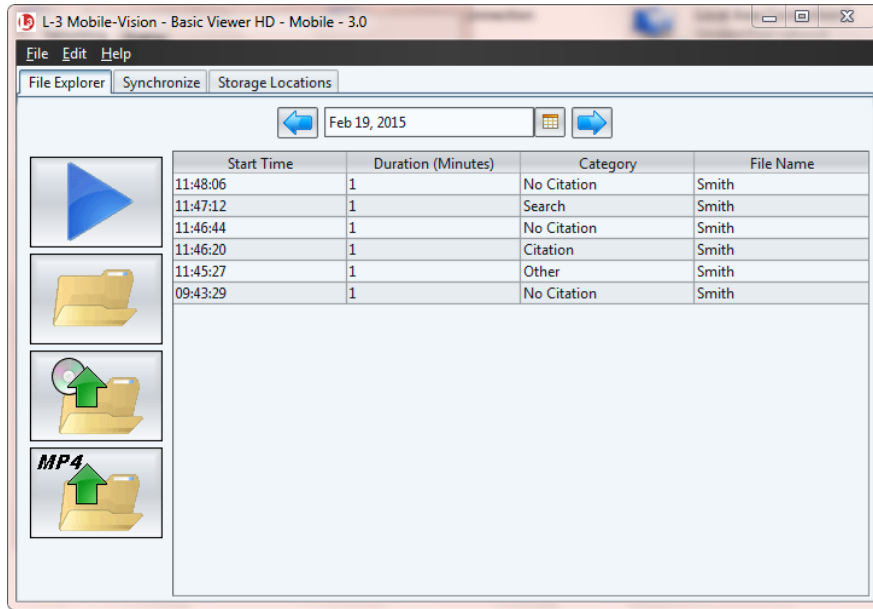
This section describes how to play a Flashback video.

- 1 Make sure the **File Explorer** tab is selected.



- 2 Enter or select the video's recording start date. (If necessary, review "Searching for a Video" on page 8.) The video record displays on-screen.

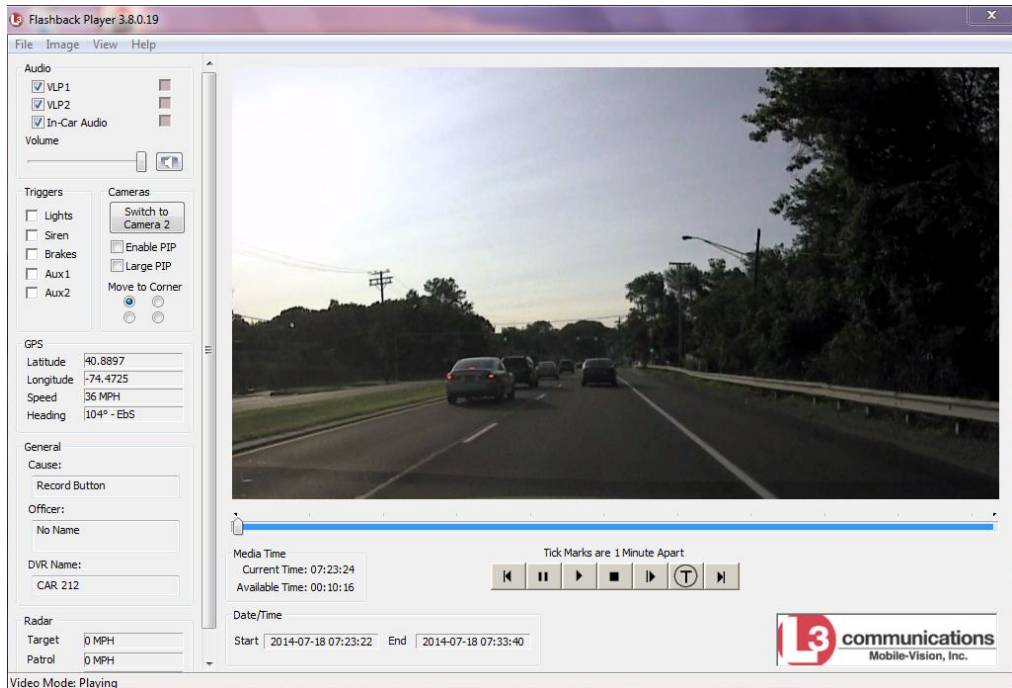
(Continued)





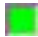


3 Click on the video record to highlight it.



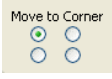
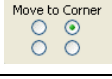
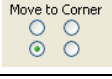
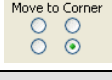







4 Click the blue “play” icon. The Flashback Player automatically launches in a separate window. Use this player to play, pause, stop, rewind, change cameras, and/or move between Trace Points. You can also view important information captured by the DVR during the recording, such as the active video and audio feeds, brake activation, and record trigger.





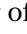
The fields on this screen are described in the following table.

Flashback Player	
Audio	
VLP1	A checkbox used to mute (<input type="checkbox"/>) or un-mute (<input checked="" type="checkbox"/>) the audio from the VLP microphone that's connected to the DVR's VLP 1 port.
VLP2	A checkbox used to mute (<input type="checkbox"/>) or un-mute (<input checked="" type="checkbox"/>) the audio from the VLP microphone that's connected to the DVR's VLP 2 port.
In-Car Audio	A checkbox used to mute (<input type="checkbox"/>) or un-mute (<input checked="" type="checkbox"/>) the audio from the in-car microphone.
Volume	The volume control bar.
	<i>Audio On</i> indicator. To turn all audio <i>off</i> , click this button.
	<i>Audio Off</i> indicator. To turn all audio back <i>on</i> , click this button.
	<i>Audio Enabled</i> indicator. Indicates that the audio channel was enabled at the DVR.
	<i>Audio Disabled</i> indicator. Indicates that the audio channel was disabled at the DVR.
	<i>Audio Indeterminate</i> indicator. Indicates that the audio channel status at the DVR (enabled or disabled) is indeterminate.
Triggers	
<p>As you watch a video, some of the boxes in the <i>Triggers</i> column may turn red, indicating when a particular trigger or triggers were engaged. A trigger (also referred to as a <i>Record Reason</i>) is the event that causes an in-car DVR to start recording. For example, if the <i>siren</i> is one of your triggers and the <i>Siren</i> box remains red for the first five minutes of the video, it indicates that the driver had his siren on during that 5-minute time period.</p>	
Lights	This box turns red when the vehicle's emergency lights were on during the course of the video.
Siren	This box turns red when the vehicle's siren was on during the course of the video.
Brakes	<p>If brakes are one of your display options (see Note below), this box turns red when the vehicle's breaks were activated during the course of the video.</p> <p>Note: Brakes are technically a display option rather than a trigger.</p>
Aux 1	<p>If the Auxiliary 1 device is one of your triggers (actual device may vary), this box turns red whenever the device is triggered. For example, if your Auxiliary 1 device is the CrashBat2 crash detector, this box will turn red at the point in the video when the CrashBat2's G-force meter detected a crash. (<i>Continued</i>)</p>

Flashback Player (cont'd)	
Triggers (cont'd)	
Aux 1 (cont'd)	If the Auxiliary 1 device is <i>not</i> one of your triggers, this box will remain blank during the entire video regardless of whether the device was triggered or not.
Aux 2	If the Auxiliary 2 device is one of your triggers (actual device may vary), this box turns red whenever the device is triggered. If the Auxiliary 2 device is <i>not</i> one of your triggers, this box will remain blank during the entire video regardless of whether the device was triggered or not.
Cameras	
	A control button used to switch to the viewpoint of Camera Channel 2 , which includes the Backseat camera and/or Bullet camera(s).
	A control button used to switch to the viewpoint of Camera Channel 1 —the Nite-Watch camera.
Enable PIP	A checkbox used to display (<input checked="" type="checkbox"/>) or hide (<input type="checkbox"/>) a “picture in picture” (PIP). A PIP is a small video display for video captured from the opposite Camera Channel.
Large PIP	A checkbox used to enlarge (<input checked="" type="checkbox"/>) or reduce (<input type="checkbox"/>) the size of the picture-in-picture (PIP) image. See <i>Enable PIP</i> above.
	Move the picture-in-picture (PIP) image to the upper left corner of the video display. See <i>Enable PIP</i> above.
	Move the picture-in-picture (PIP) image to the upper right corner of the video display. See <i>Enable PIP</i> above.
	Move the picture-in-picture (PIP) image to the lower left corner of the video display. See <i>Enable PIP</i> above.
	Move the picture-in-picture (PIP) image to the lower right corner of the video display. See <i>Enable PIP</i> above.
GPS	
The GPS display indicates the exact speed and location of the vehicle during each segment of the video.	
Latitude	The GPS latitude coordinate.
Longitude	The GPS longitude coordinate.
Speed	The vehicle’s speed, as determined by the GPS coordinates.
Heading	The direction in which the vehicle is moving.

Flashback Player (cont'd)	
General	
Cause	The trigger event that started the recording (lights, siren, etc.)
Officer	The name of the officer who was logged into the DVR at the time this video was recorded.
DVR Name	The name of the DVR that recorded this video.
Radar	
If your department is using the Radar interface module, the following fields will be populated.	
Target	The MPH or KPH reading that an officer obtained after the radar device was aimed at a speeding vehicle.
Patrol	The MPH or KPH reading of the officer's patrol car at the time a radar reading was obtained.
Lock	The minimum MPH or KPH reading that the officer was looking for when the radar device was aimed at a speeding vehicle.
Media Time	
Current Time	The time at which the video was recorded. This display changes constantly during playback to indicate the exact time of day that each video frame was recorded. Displays in hh:mm:ss 24-hour format.
Available Time	The amount of time remaining on the video. Displays in hh:mm:ss 24-hour format.
Date/Time	
Start	The date and time at which the video began recording. Time displays in hh:mm:ss 24-hour format.
End	The date and time at which the video stopped recording. Time displays in hh:mm:ss 24-hour format.
Play Controls	
	Go to beginning
	Pause/Unpause
	Play
	Stop
	Advance one frame at a time

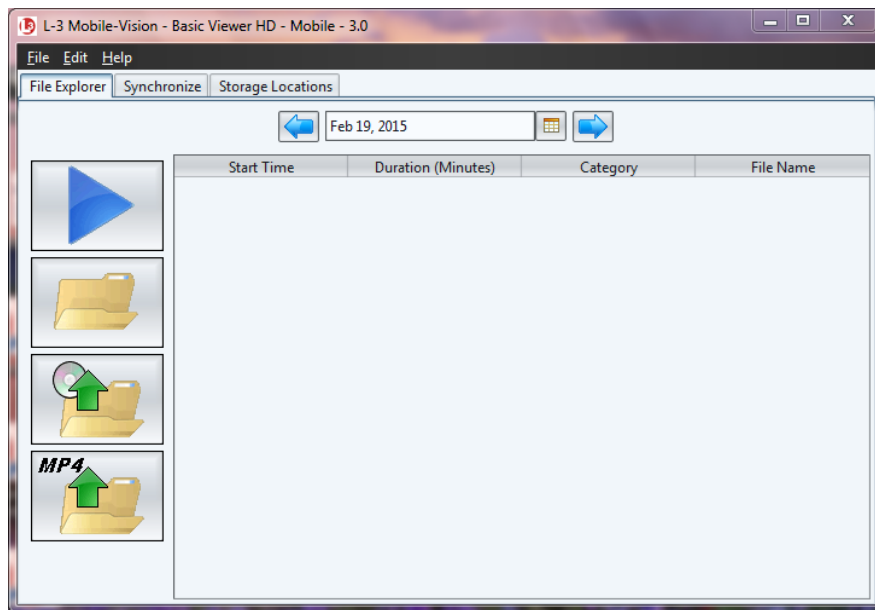
Flashback Player (cont'd)	
Play Controls (cont'd)	
	Advance to a Trace Point. A trace point is a place-marker that an officer can add to a video while it's recording.
	Go to end

- 5 When you're finished viewing the video, click the  in the upper right corner of the Flashback Player to exit.

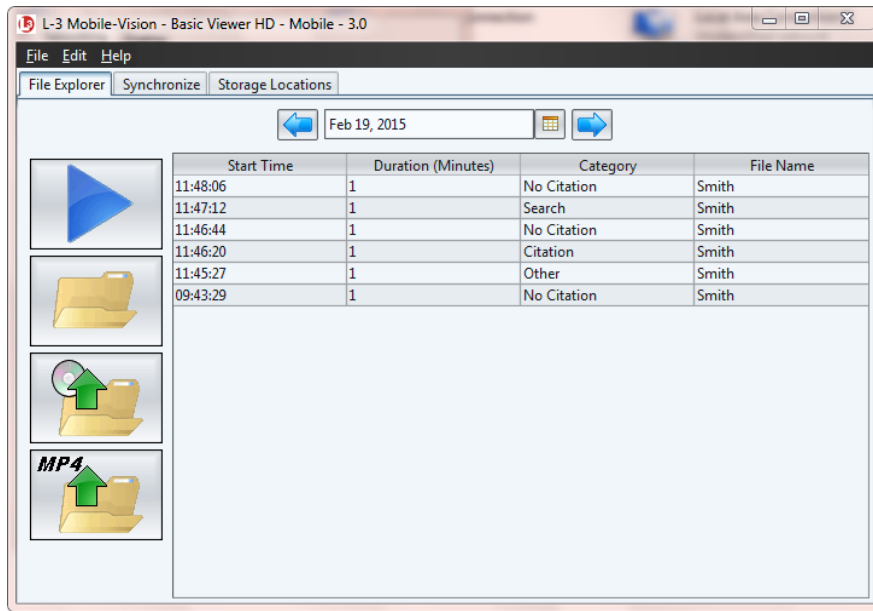
Displaying a Video's Storage Location

This section describes how to identify the disk drive location in which a particular video is stored.

- 1 Make sure the **File Explorer** tab is selected.



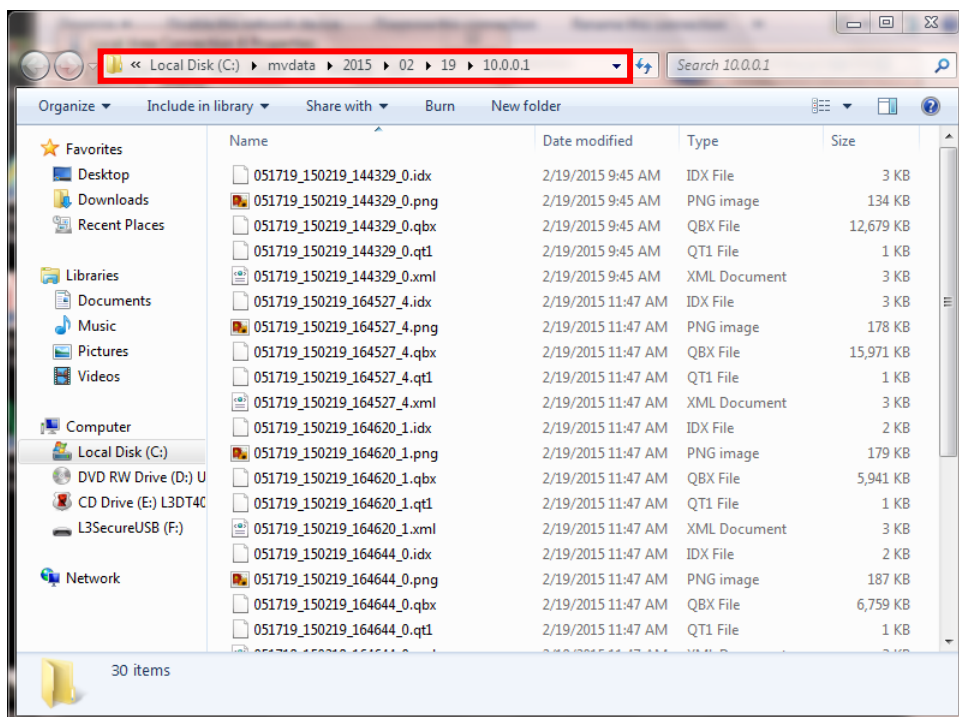
- 2 Enter or select the video's recording start date. (If necessary, review "Searching for a Video" on page 8.) The video record displays on-screen.



3 Click on the appropriate video record.



4 Click the “Show Directory...” folder icon. The video’s storage path displays at the top of the page.

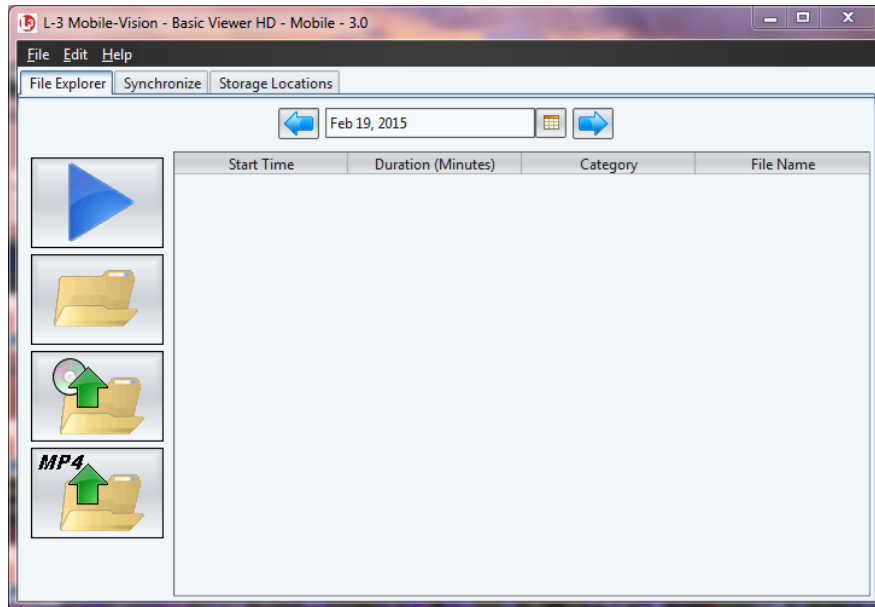


5 Click the  in the upper right corner of the Windows screen to close it.

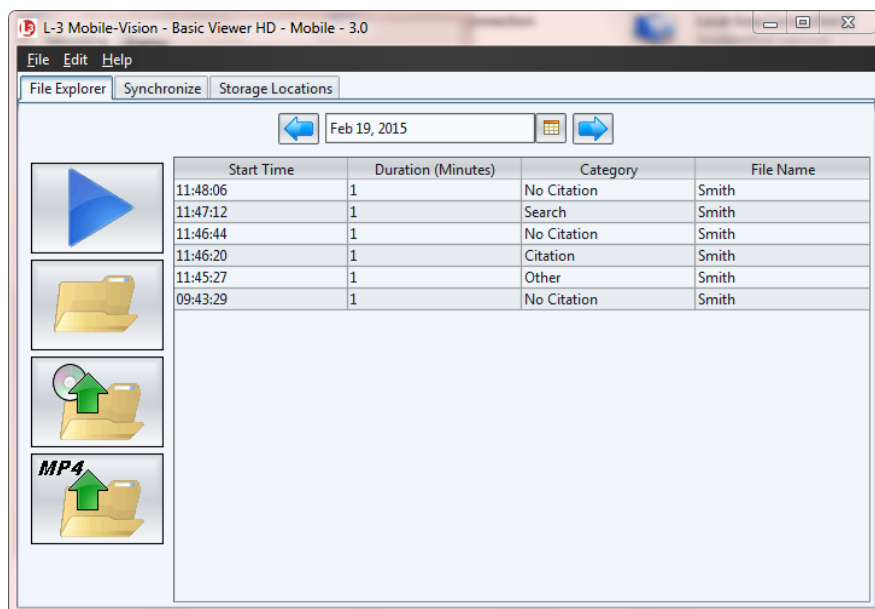
Exporting Videos

This section describes how to export selected video(s) to your PC, agency server, or external storage device. Perform this task when you wish to create a backup or evidential disc using your PC’s DVD burner. If you wish to import video into another application, such as video editing software, see “Converting Videos to MP4 Format” on page 21 instead.

- 1 Make sure the **File Explorer** tab is selected.



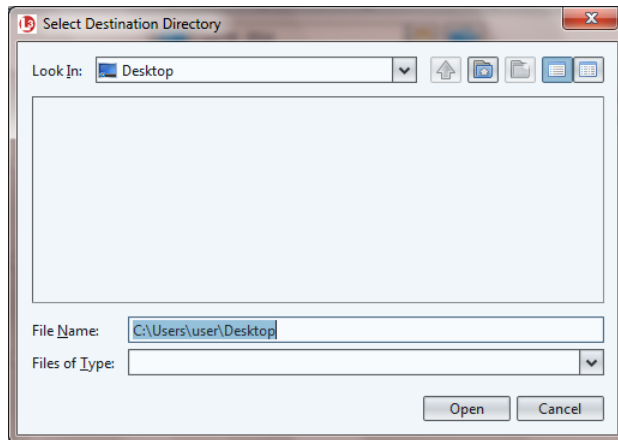
- 2 Enter or select the video’s recording start date. (If necessary, review “Searching for a Video” on page 8.) The video record displays on-screen.



- 3 Click on the video you wish to export. To export more than one video, hold the **Ctrl** key *down* while you click on each record.



- 4 Click the “export” button. The Select Destination Directory popup displays.

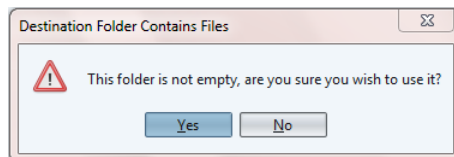


- 5 Navigate to the disk drive location where you wish to save the exported video(s).

- 6 Click **Open**.

⇒ If the selected disk drive location is empty, the system begins copying the video files to that drive. Skip to step 8.

⇒ If the selected disk drive location is *not* empty, the following warning message displays.

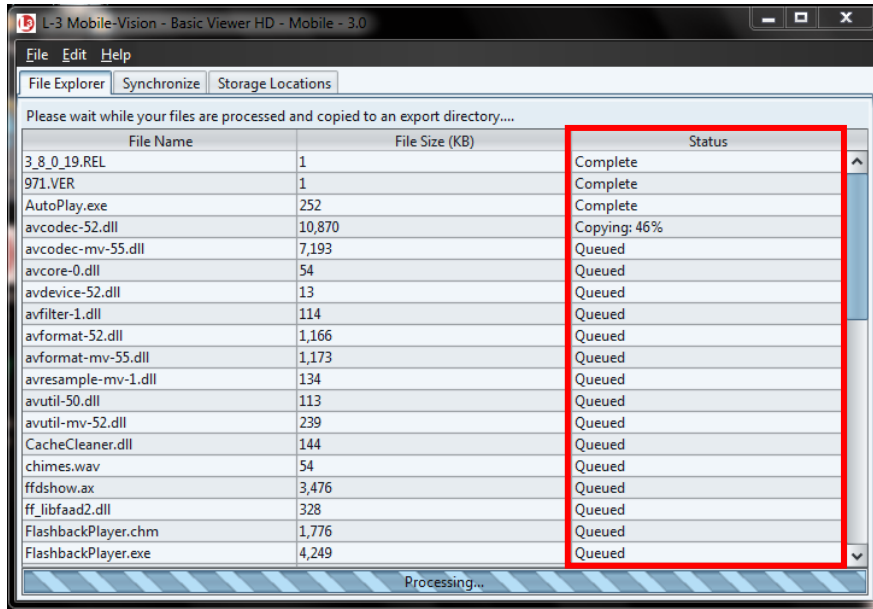


If you select **Yes**, the system will overwrite any files that have the same name. Other files will remain intact.

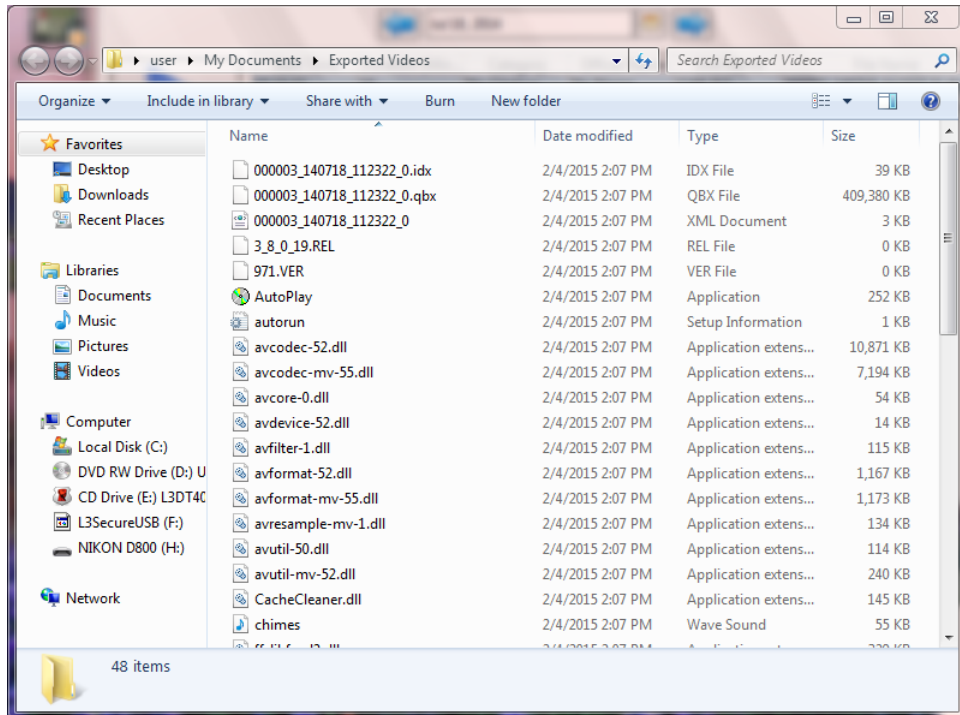
- 7 Click **Yes**. The system begins copying the video files to the selected disk drive location.

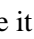
You can monitor the export’s progress by viewing the values in the *Status* column (i.e., *Queued*, *Copying*, or *Complete*).

(Continued)



When the export is complete, your videos will display in Windows Explorer.

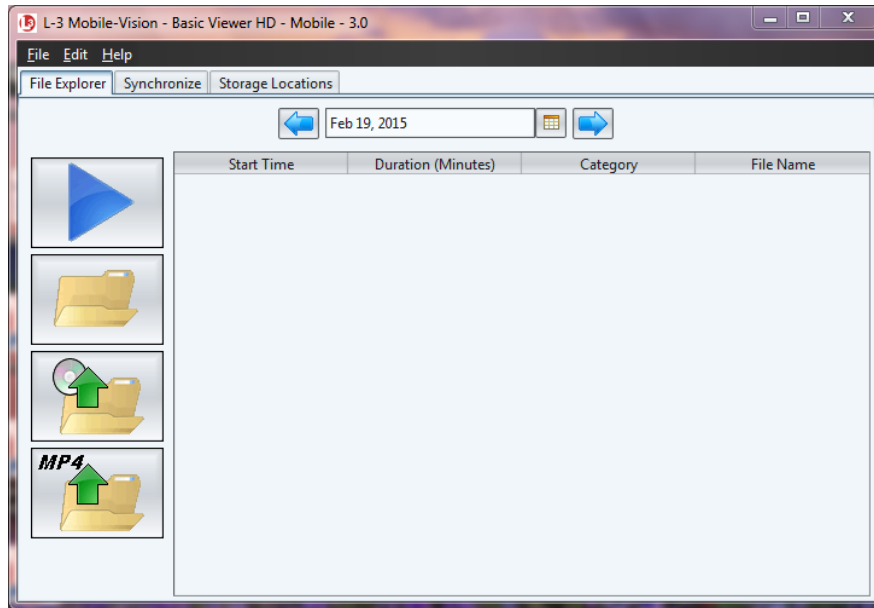


8 Click the  in the upper right corner of the Windows screen to close it.

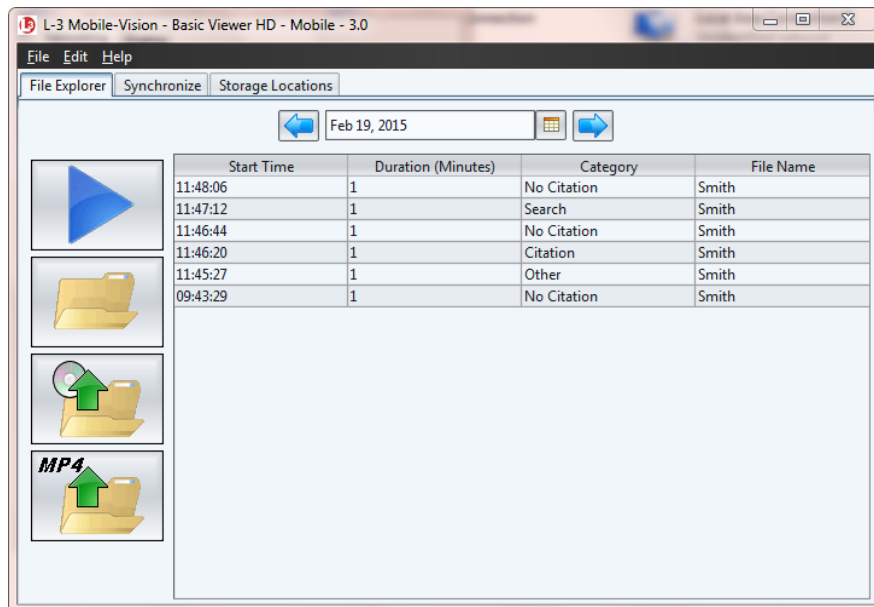
Converting Videos to MP4 Format

This section describes how to convert selected video(s) from QBX to MP4 format and export them to a selected subdirectory on your PC. After you've performed this task, you can then import those videos into various third-party applications, such as redaction or reporting software.

- 1 Make sure the **File Explorer** tab is selected.



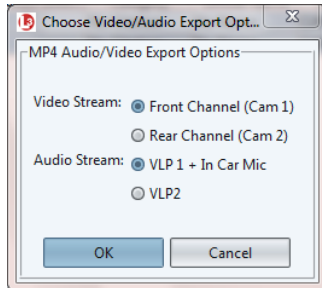
- 2 Enter or select the video's recording start date. (If necessary, review "Searching for a Video" on page 8.) The video record displays on-screen.



- 3 Click on the video you wish to convert. To convert more than one video, hold the **Ctrl** key *down* while you click on each record.



- 4 Click the MP4 icon. The Choose Video/Audio Export Options popup displays.



- 5 To export the video recorded from your Nite Watch camera (Front Channel), proceed to the next step.

– OR –

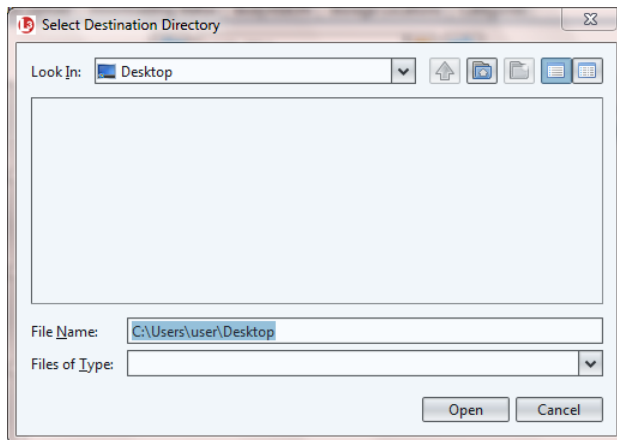
To export the video recorded from your Backseat and/or Bullet cameras (Rear Channel), select **Rear Channel (Cam 2)**.

- 6 To include the audio streams from your in-car mic *and* VLP mic that's connected to your DVR's VLP 1 port, proceed to the next step.

– OR –

To include the audio stream from your VLP mic that's connected to your DVR's VLP 2 port, select **VLP2**.

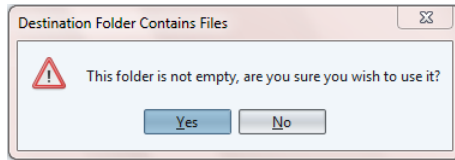
- 7 Click **OK**. The Select Destination Directory popup displays.



- 8 Navigate to the disk drive location where you wish to save your MP4 file(s).

9 Click Open.

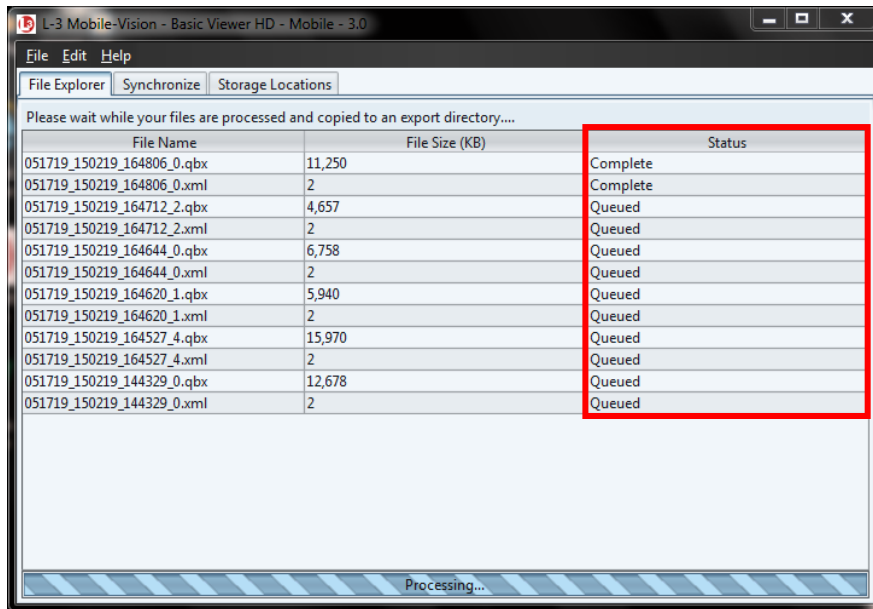
- ⇒ If the selected disk drive location is empty, the system begins copying the video files to that drive. Skip to step 11.
- ⇒ If the selected disk drive location is *not* empty, the following warning message displays.



If you select **Yes**, the system will overwrite any files that have the same name. Other files will remain intact.

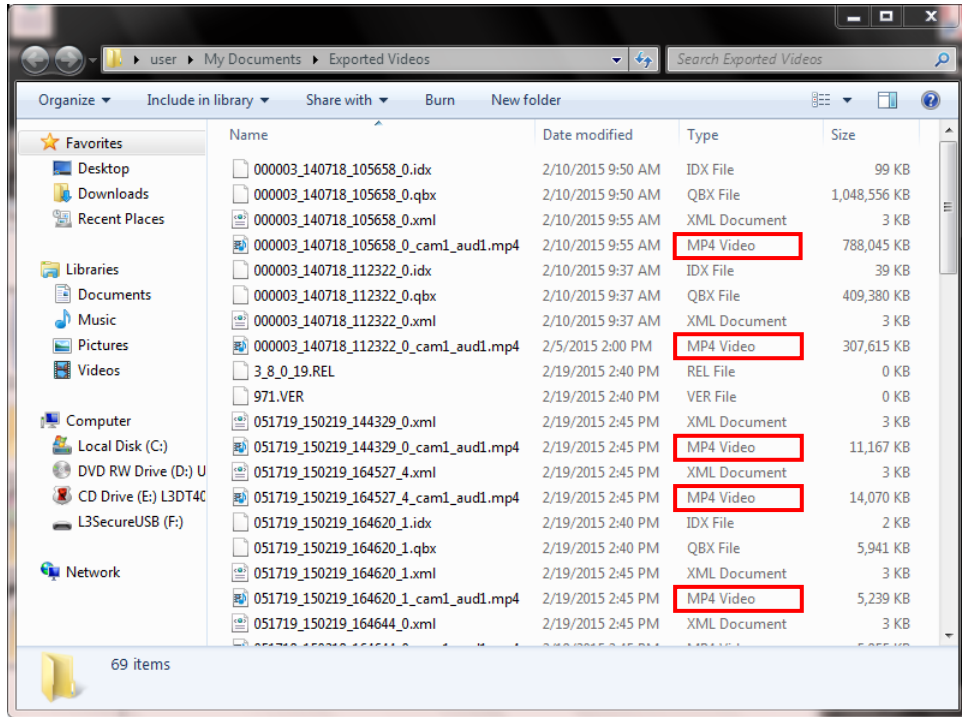
10 Click Yes. The system begins copying the video files to the selected disk drive location.


You can monitor the conversion's progress by viewing the values in the *Status* column (i.e., *Queued*, *Converting*, or *Complete*).



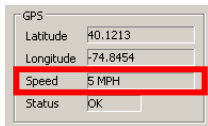
When the conversion is complete, your videos will display in Windows Explorer.

(Continued)



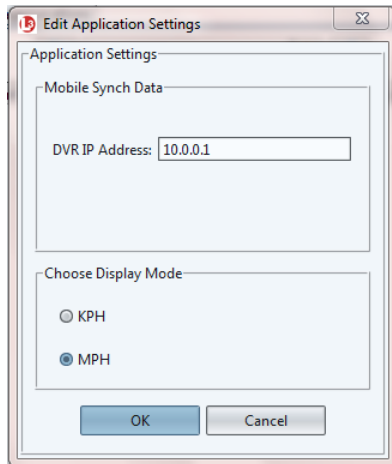
- 11 Click the  in the upper right corner of the Windows screen to close it.

Changing the Speed Display Mode



This section describes how to change the GPS speed display on the Flashback Player. You can display a vehicle’s speed in either **MPH** (miles per hour) or **KPH** (kilometers per hour). Default is **MPH**.

- 1 Go to the menubar at the top of the page and select **Edit**→ **Application Settings**. The Edit Application Settings screen displays.

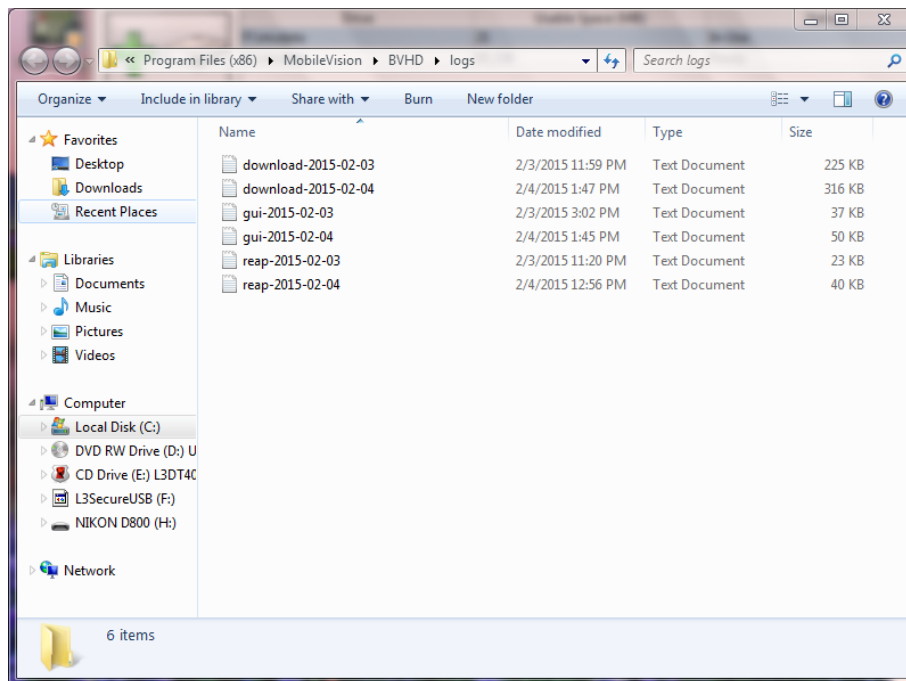


- 2 Go to the bottom of the screen and select **KPH** or **MPH**.
- 3 Click **OK**.

Displaying the Logs Directory

Occasionally, your L-3 Mobile-Vision Technical Support Engineer may ask for information in your Basic Viewer logs in order to troubleshoot a problem. This section describes how to display those logs.

- 1 Go to the menubar at the top of the page and select **File**→ **Open Logs Dir**. The Logs directory displays.



- 2 Double-click on the file you wish to view, as instructed by your Technical Support Engineer.
- 3 When you're finished, click the in the upper right corner of each Windows screen.

Burning DVDs

To burn a video DVD for backup or evidence purposes, follow these steps.

- 1 Make sure you have commercial DVD burning software installed on your PC, such as Roxio Creator.
- 2 Export the video(s) to your PC, as described in “Exporting Videos” on page 18.
- 3 Use your PC’s DVD burner to burn the selected videos to disc.

Contact Information

Phone: 800-336-8475; Fax: 973-316-9509

Email: service.MVI@L-3Com.com

Address: L-3 Mobile-Vision
400 Commons Way, Suite F
Rockaway, NJ 07866

Index

- Add
 - IP address for DVR, 3
 - Video storage location, 4
- Address, IP, 3
- Advance
 - to beginning of video, 15
 - to end of video, 16
 - to Trace Point, 16
- Archive discs, 26
- Audio
 - In-car, 13
 - Mute button, 13
 - VLP1, 13
 - VLP2, 13
 - Volume, 13
- Auxiliary 1 trigger, 13
- Auxiliary 2 trigger, 14
- Available Time* field, 15
- Backup discs, 26
- Basic Viewer
 - Communicating with, 3, 10
 - Installing, 1
 - Viewing the Logs Directory for, 25
- Brakes trigger, 13
- Burning DVDs, 26
- Camera 1 view, 14
- Camera 2 view, 14
- Cause* field, 15
- CDs, burning, 26
- Change
 - Speed display on Flashback Player, 24
 - Video storage location, 5
- Communication between the DVR and Basic Viewer, 3, 10
- Contact information, 26
- Converting videos to MP4 format, 21
- CrashBat, 13
- Current Time* field, 15
- Customer Support, 26
- Date
 - Video began recording, 8, 15
 - Video finished recording, 15
- Deleting a storage location, 6
- Discs, burning, 26
- Display
 - Logs directory, 25
 - Video location, 16
 - Video record, 8
- Downloading videos to Basic Viewer, 3, 10

- DVDs, burning, 26
- DVR
 - IP address, entering, 3
 - Login Key, generating, 6
 - Officer name, 15
 - Used to record a video, 15
 - User ID logged into, 15
- Emergency lights, 13
- Enable PIP, 14
- End date of video, 15
- End time of video, 15
- Evidence discs, 26
- Export
 - Discs, burning, 26
 - Videos, 18
- Flashback
 - Login key, generating, 6
 - Player, 13
 - Video, playing, 11
 - Video, searching for, 8
 - Videos, converting to MP4 format, 21
 - Videos, exporting, 18
 - Videos, location of, 16
- Frame, video, 15
- Generating a DVR login key, 6
- Go to beginning of video, 15
- Go to end of video, 16
- GPS coordinates, 14
- Heading, of vehicle during video, 14
- In-car audio track, 13
- Installing Basic Viewer, 1
- IP address, 3
- Key, for DVR login, 6
- KPH
 - Display, changing, 24
 - During video, 14
 - Lock speed, 15
 - Patrol speed, 15
 - Target speed, 15
- Large PIP, 14
- Latitude coordinate, 14
- Lights trigger, 13
- Location, storage. *See* Storage location(s)
- Lock speed, captured by radar detector, 15
- Login key for DVR, 6
- Logs directory, displaying, 25
- Longitude coordinate, 14

- Microphone
 - In-car, 13
 - VLP1, 13
 - VLP2, 13
- MP4 format, converting videos to, 21
- MPH
 - Display, changing, 24
 - During video, 14
 - Lock speed, 15
 - Patrol speed, 15
 - Target speed, 15
- Mute button, 13
- New video storage location, adding, 4
- Officer logged into DVR at time of recording, 15
- Patrol speed, for radar detector, 15
- Pause button, 15
- Picture in picture (PIP), 14
- Play controls for the Flashback Player, 15, 16
- Player, Flashback, 13
- Radar
 - Interface Module, 15
 - Lock speed, 15
 - Patrol speed, 15
 - Target speed, 15
- Record reason
 - Auxiliary 1, 13
 - Auxiliary 2, 14
 - Brakes, 13
 - Lights, 13
 - Siren, 13
- Searching for a video, 8
- Siren trigger, 13
- Speed
 - Display on Flashback Player, changing, 24
 - of vehicle during recording, 14
 - Radar lock, 15
 - Radar patrol, 15
 - Radar target, 15
- Start date of video, 15
- Start time of video, 15
- Stop button, 15
- Storage location(s)
 - Adding, 4
 - Changing, 5
 - Deleting, 6
 - Displaying, 16
 - Introduction to, 4
- Synchronizing Basic Viewer with your DVR, 10
- Target speed, set for radar detector, 15
- Technical Support, 26

- Time
 - Video end, 15
 - Video start, 15
- Trace Point, 16
- Transmitting videos to Basic Viewer, 3, 10
- Trigger/record reason
 - Auxiliary 1, 13
 - Auxiliary 2, 14
 - Brakes, 13
 - Cause, 15
 - Lights, 13
 - Siren, 13
 - Video, 13
- Uploading videos to Basic Viewer, 3, 10
- USB drive, used to login to DVR, 6
- User ID of officer logged into DVR, 15
- Vehicle
 - GPS coordinates during video, 14
 - Speed, 14
- Video
 - Converting to MP4 format, 21
 - DVR source, 15
 - End date, 15
 - End time, 15
 - Exporting, 18
 - Latitude coordinate, 14
 - Longitude coordinate, 14
 - Player, Flashback, 13
 - Playing, 11
 - Searching for, 8
 - Start date, 15
 - Start time, 15
 - Storage location, adding, 4
 - Storage location, changing, 5
 - Storage location, deleting, 6
 - Storage location, viewing, 16
 - Storage locations, introduction to, 4
 - Transmitting to Basic Viewer, 3, 10
 - Triggers, 13
- Viewing a video recording, 11, 14
- VLP audio track, 13
- Volume control bar, 13