



Live Alert



#	License Plate	Event Time	HubID
1	SCH-K-9	2015.07.09 13:45:24 EDT	cc-quick-alert-test
2	267501	2015.07.09 13:44:47 EDT	critical
3	SCH-K-9	2015.07.09 13:44:23 EDT	cc-quick-alert-test
4	267501	2015.07.09 13:42:45 EDT	critical
5	267504	2015.07.09 13:42:44 EDT	critical

Message Details

High Severity

Demiss Sound: []

License Plate: SCH-K-9

Event Time: 2015.07.09 13:42:24 EDT

Unit Name: TERRY-PC

Lanes: undefined

HubList Name: cc-quick-alert-test

Reasore: []

Originating State: []

GPS Coordinates: 38.42827, -81.39555

Patch Image:

Overview Image:


*Connected

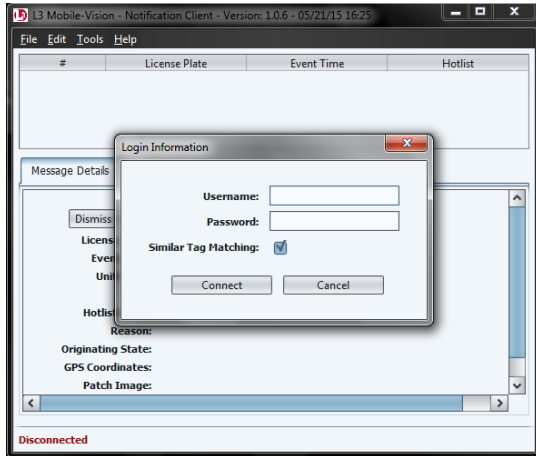
The Live Alert utility, also referred to as “Notification Client,” displays real-time alerts whenever your AlertVU unit receives a hit on a license plate that’s on a system hotlist for which you have Notification rights. This brochure describes how to activate that utility within your vehicle.



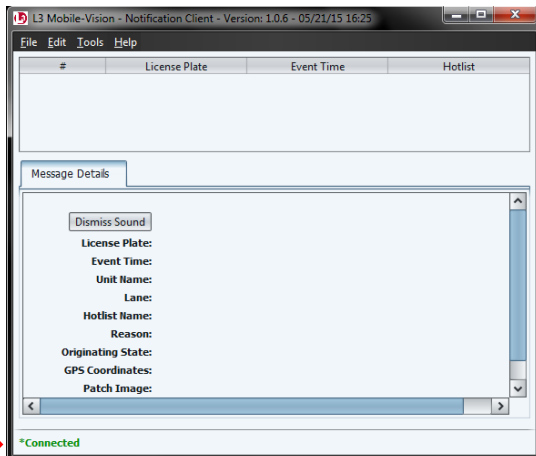


Activating Live Alert in Your Vehicle

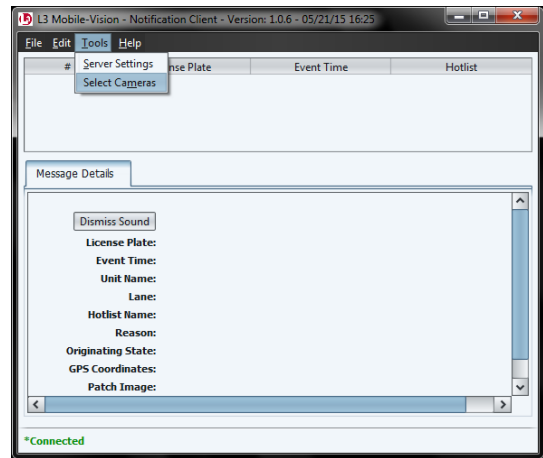
- 1 Make sure you're logged into your mobile data computer.
- 2  Double-click on the AlertVU Notification icon. The Login prompt displays.



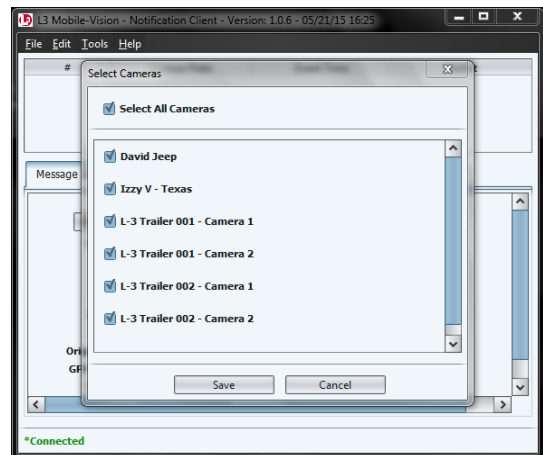
- 3 Enter your AlertVU Back Office User ID in the *Username* field.
- 4 Enter your AlertVU Back Office password in the *Password* field.
- 5 If you wish to receive alerts on plate reads that are an exact match to plates on your AlertVU hotlists (default), proceed to the next step.
– OR –
If you wish to receive alerts on plate reads that are either an exact match OR similar but not identical to plates on your AlertVU hotlists, select the *Similar Tag Matching* checkbox.
- 6 Click **Connect**. The word “Connected” displays in the lower left corner of the popup, indicating that the Live Alert Utility is now activated.




- 7 If you wish to receive live alerts on hits that come from all of your AlertVU cameras (default), skip to step 10.
– OR –
If you wish to receive live alerts on hits that come from *some*, but not all, of your AlertVU cameras, proceed to the next step.
- 8 Select **Tools** → **Select Cameras** from the menubar.



The Select Cameras popup displays.



- 9 Deselect those camera(s) for which you do not wish to receive alerts.
- 10 Click **Save**.
- 11 Click the  icon to minimize the popup.

Any time an AlertVU unit receives a hit on a license plate that's 1) on a system hotlist for which you have Notification rights and 2) was captured from a camera on your selection list, the Notification Client popup will automatically display with detailed information on the hit. If audio is activated on your PC, an alarm will sound as well.